

Amber Cove

SERIES



SKYLINE®

Amber Cove Series

Home is where the heart is, where memories are created, and where life's most important moments are celebrated. Since 1951, Skyline Homes has grown to be one of the most recognized factory-built home builders; a recognition earned by consistently delivering style, quality, and craftsmanship in every home we build. From start to finish, we are involved in your home every step of the way.

At Skyline Homes, we don't just build homes, we build dreams. We design and build our homes with people in mind. From contemporary style to traditional design, we are committed to providing features and finishes that can be enjoyed for a lifetime. We promise you will feel the difference of a Skyline Home. It's the feeling of comfort; the feeling of coming home to a place you truly love.

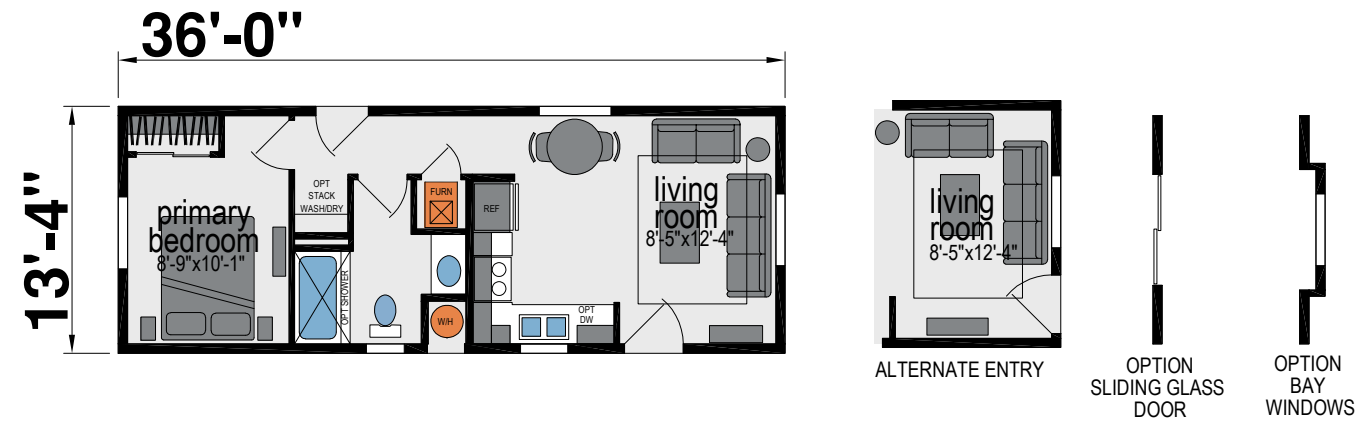




K605J

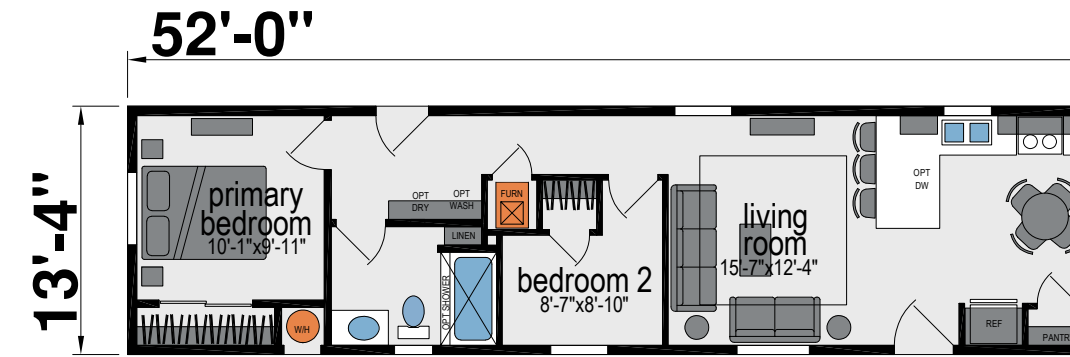
E517J

One Bed | One Bath | 479 Sq. Ft.



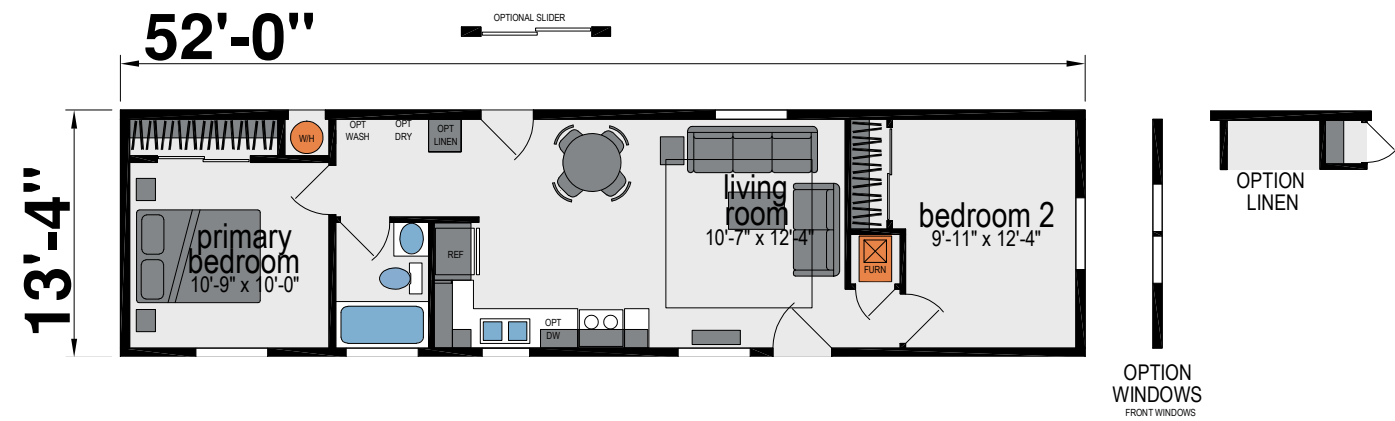
E502J

Two Bed | One Bath | 693 Sq. Ft.



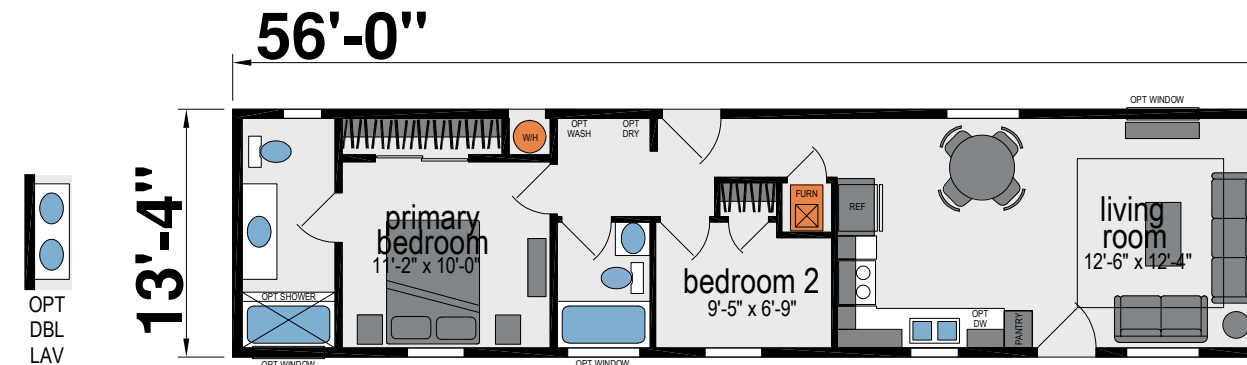
E505J

Two Bed | One Bath | 693 Sq. Ft.



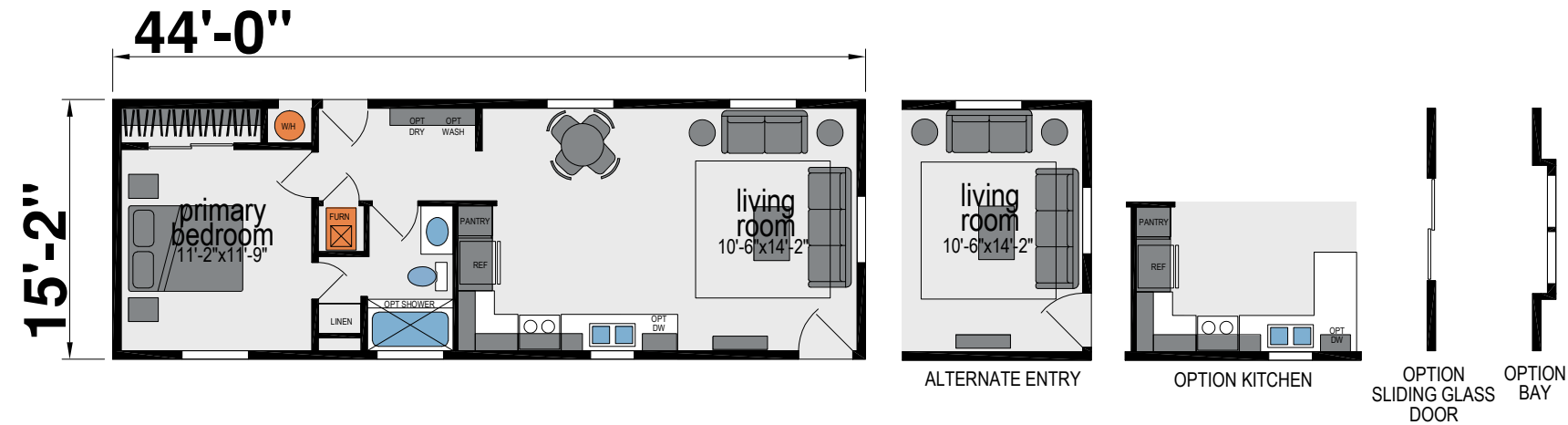
E540J

Two Bed | Two Bath | 746 Sq. Ft.



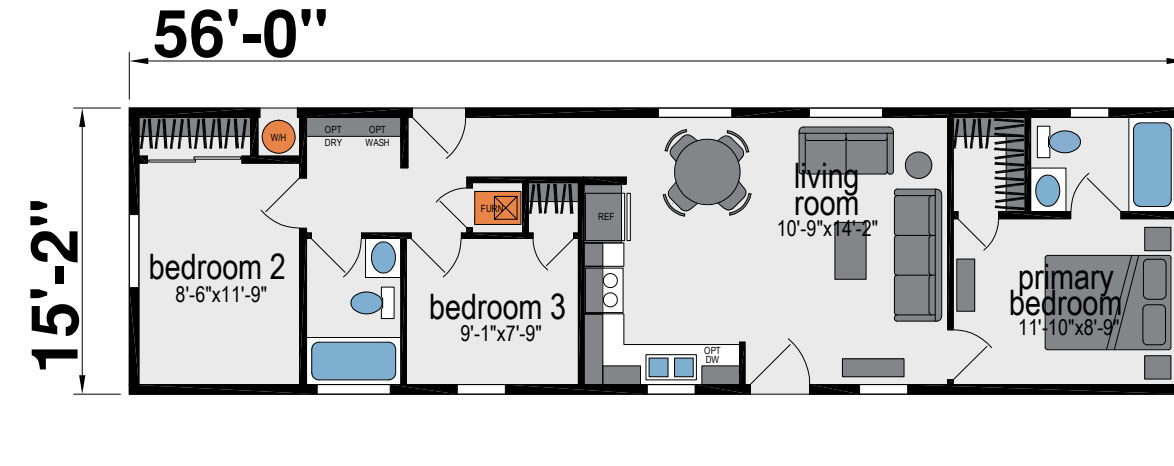
K200J

One Bed | One Bath | 667 Sq. Ft.



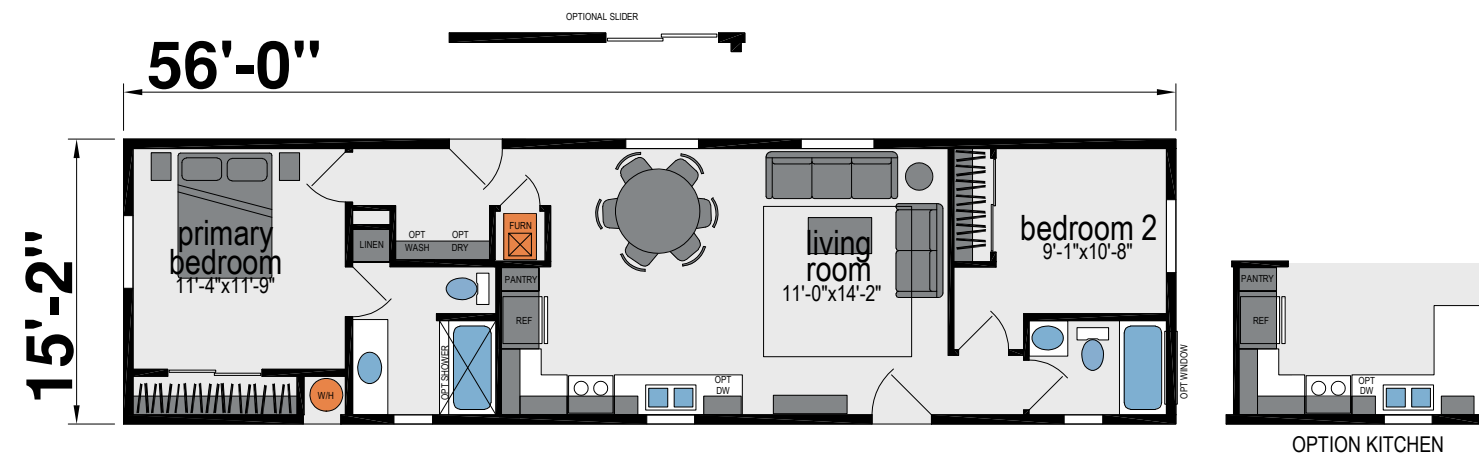
K202J

Three Bed | Two Bath | 849 Sq. Ft.



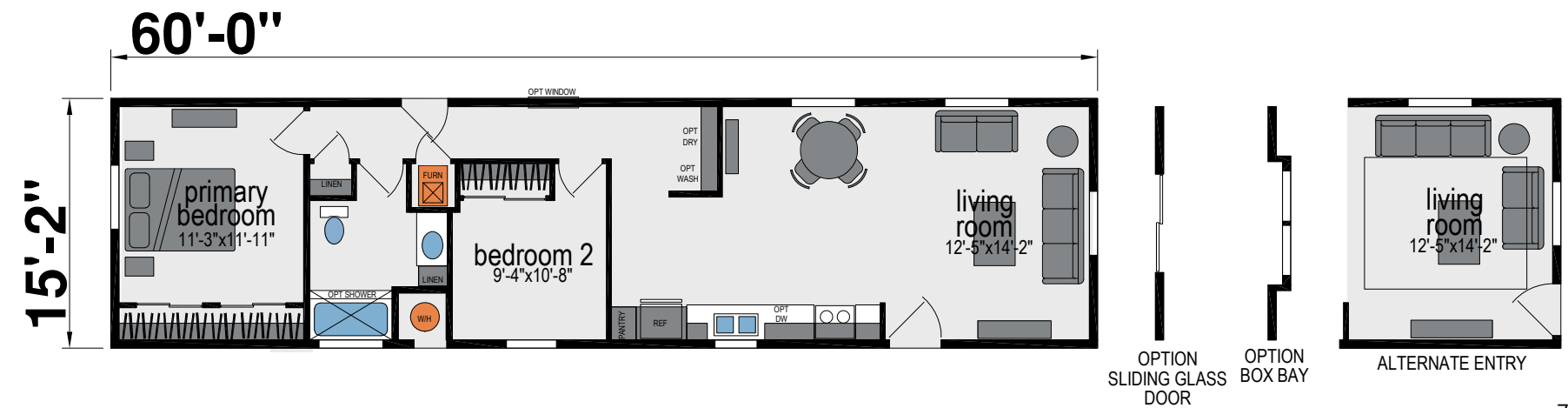
K201J

Two Bed | Two Bath | 849 Sq. Ft.



K251J

Two Bed | One Bath | 910 Sq. Ft.



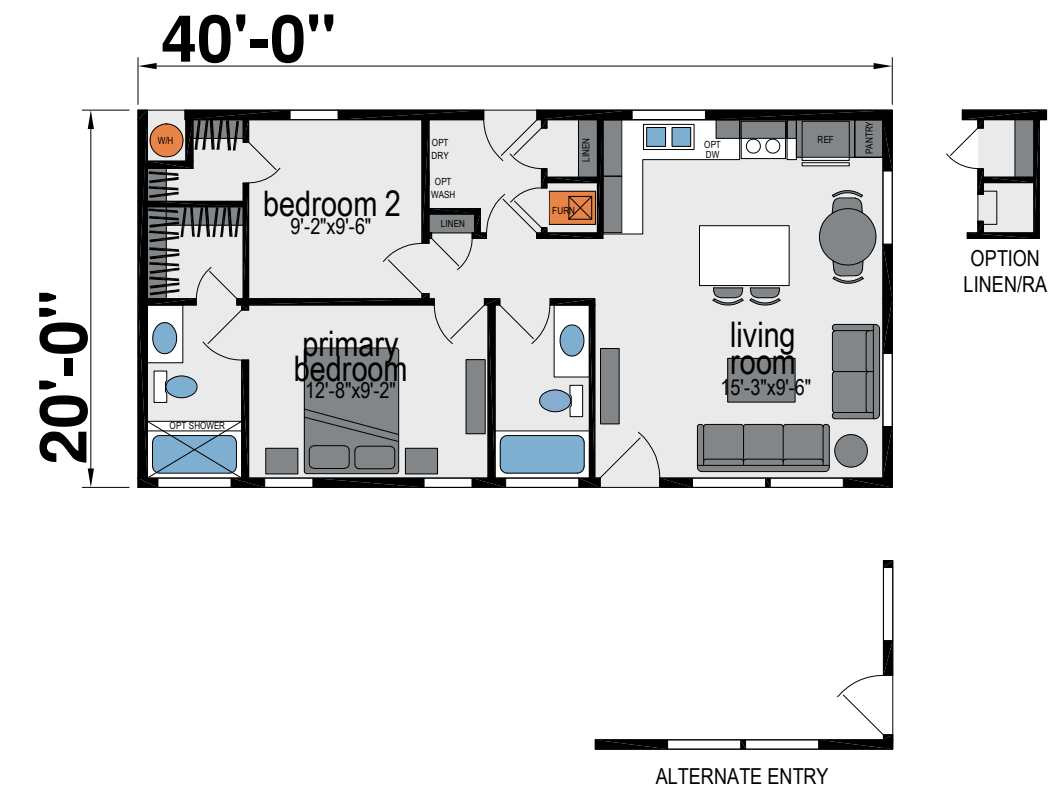
K206J

Three Bed | Two Bath | 910 Sq. Ft.



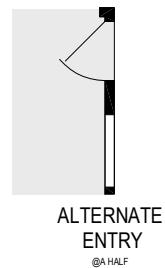
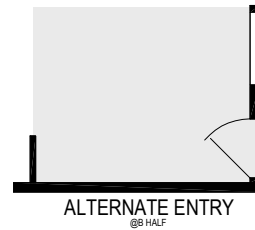
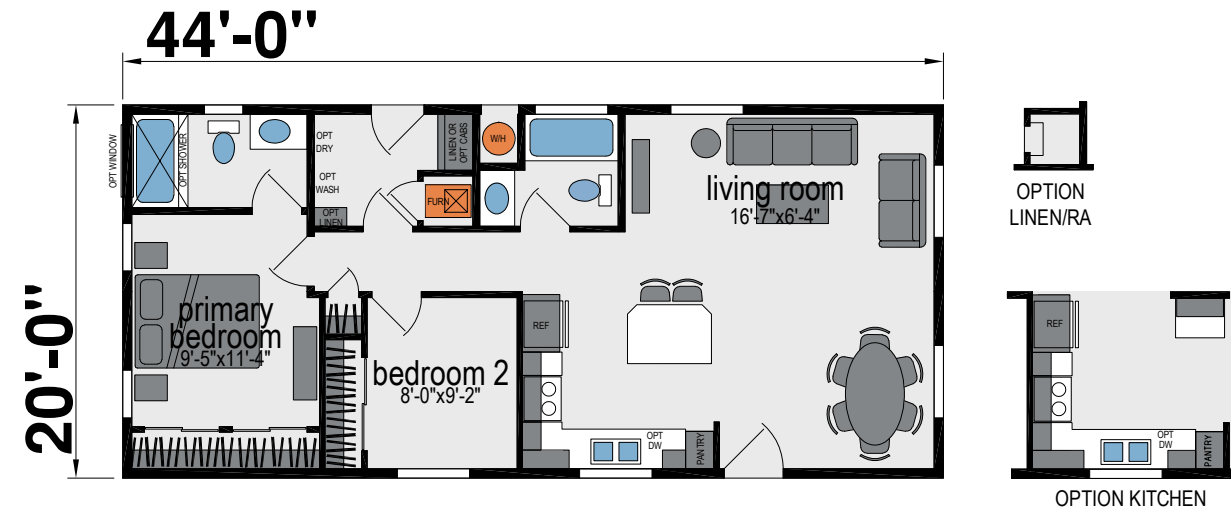
4610J

Two Bed | Two Bath | 800 Sq. Ft.



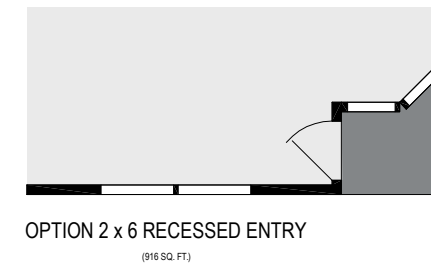
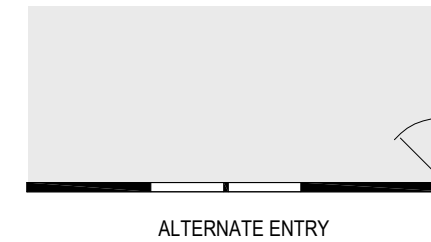
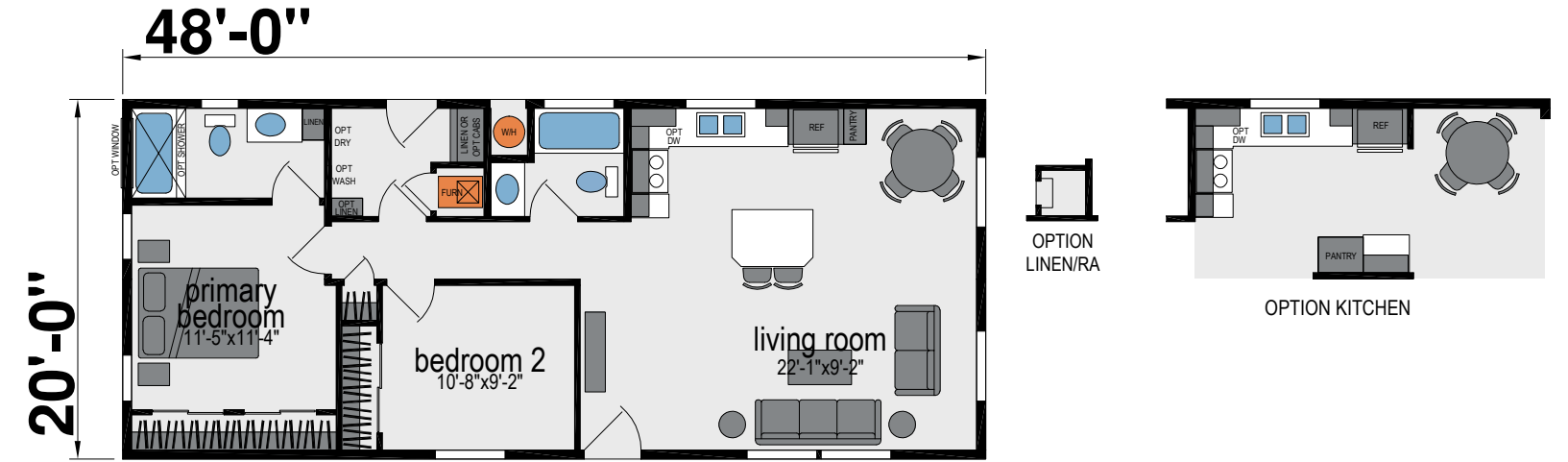
4602J

Two Bed | Two Bath | 880 Sq. Ft.



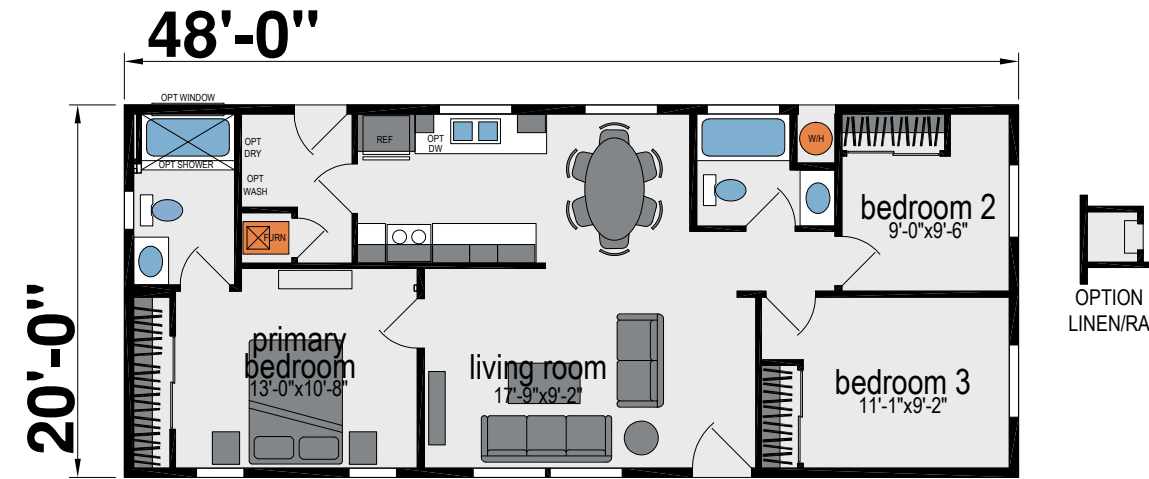
4604J

Two Bed | Two Bath | 960 Sq. Ft.



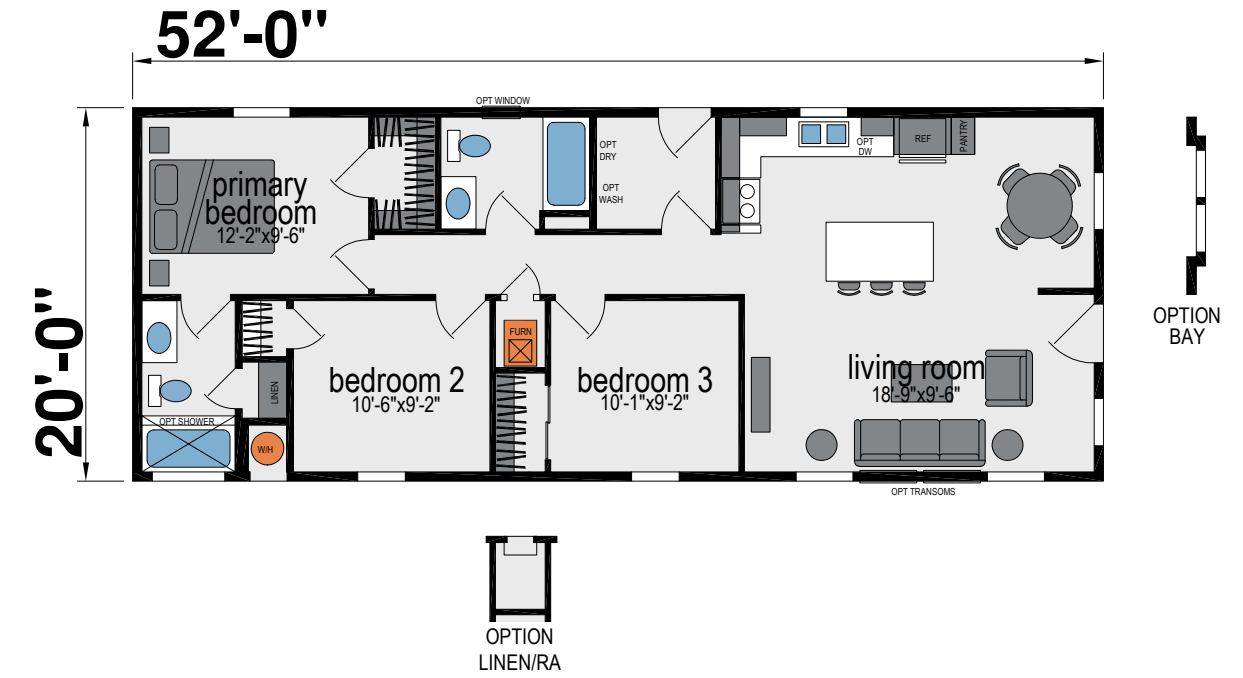
4617J

Three Bed | Two Bath | 960 Sq. Ft.



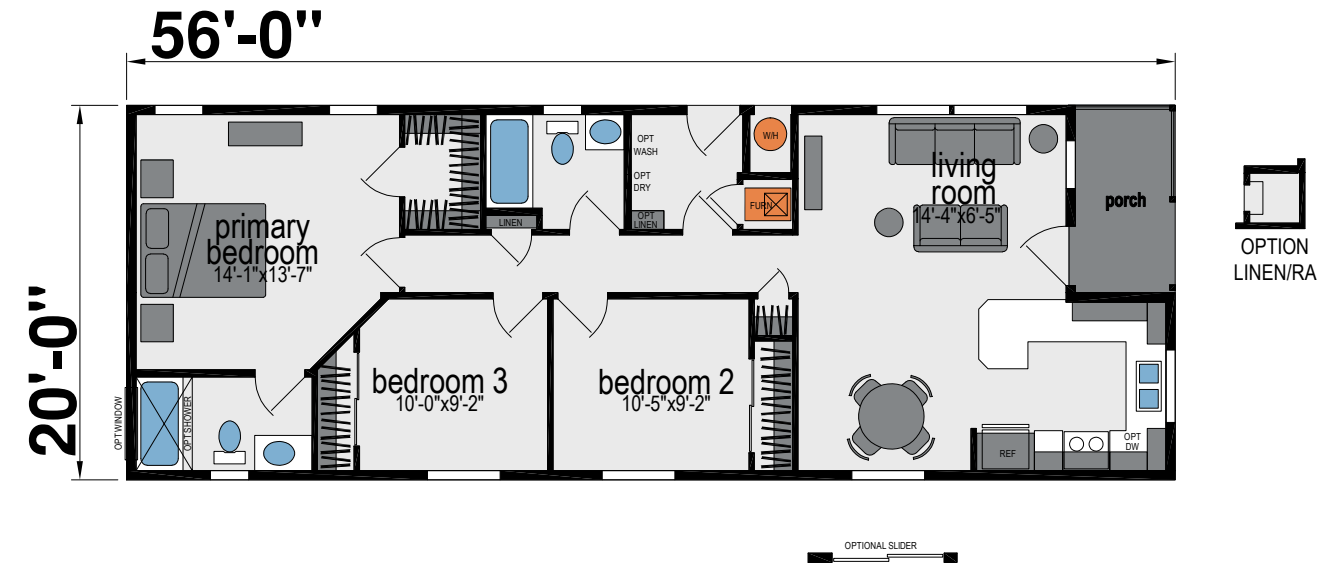
4606J

Three Bed | Two Bath | 1,040 Sq. Ft.



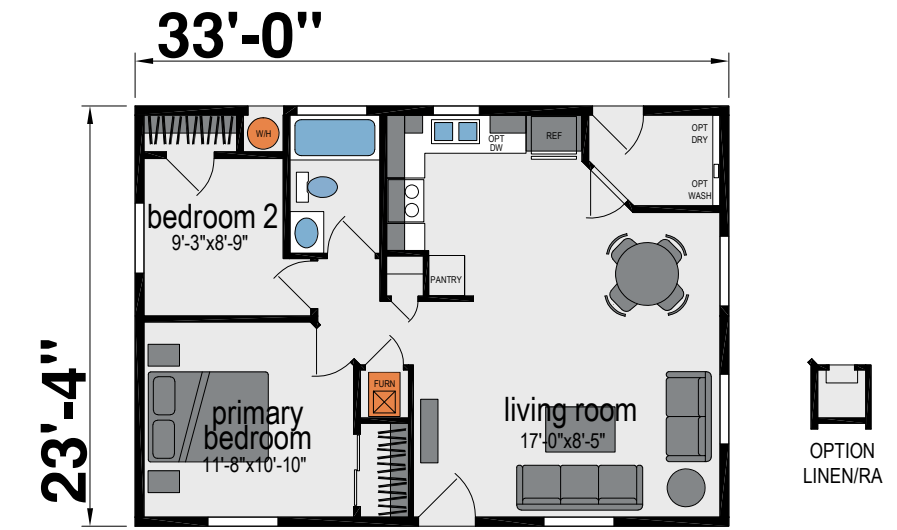
4608J

Three Bed | Two Bath | 1,066 Sq. Ft.



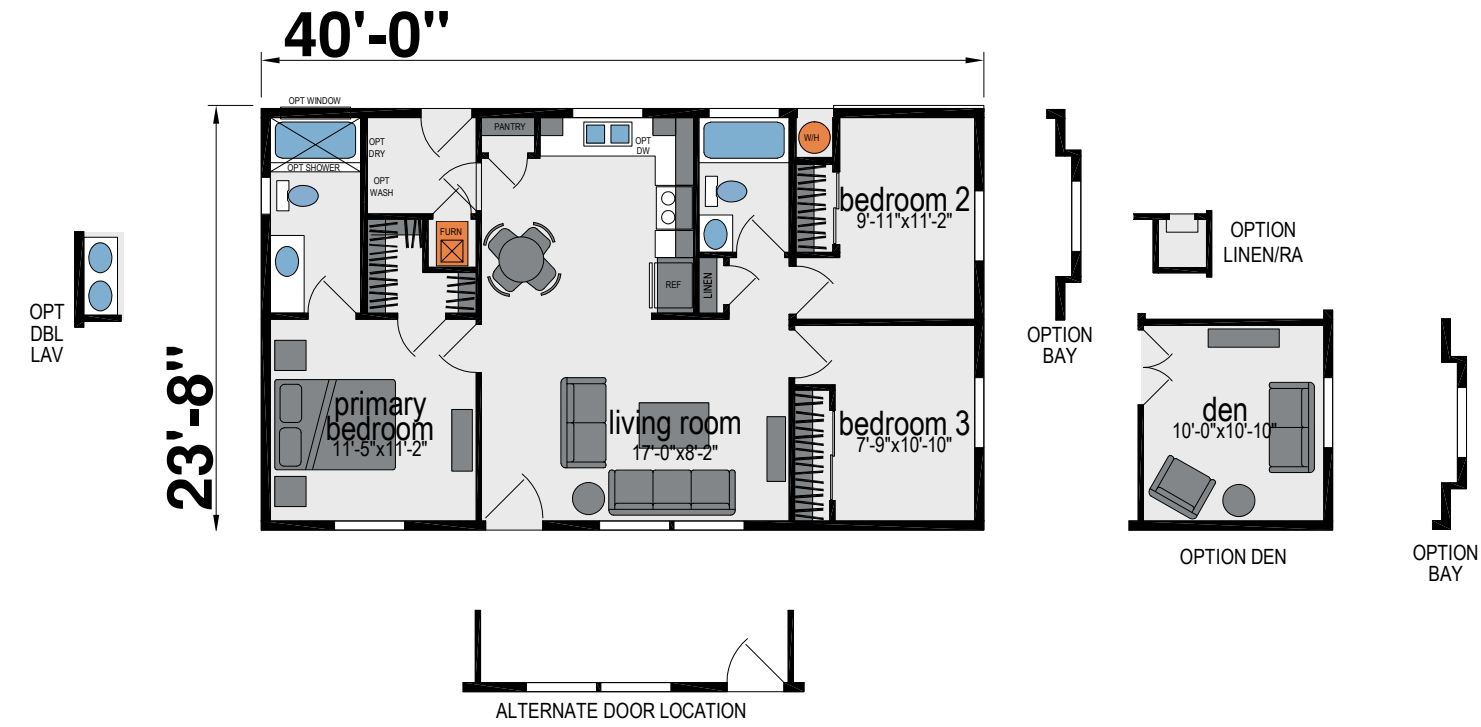
K602J

Two Bed | One Bath | 770 Sq. Ft.



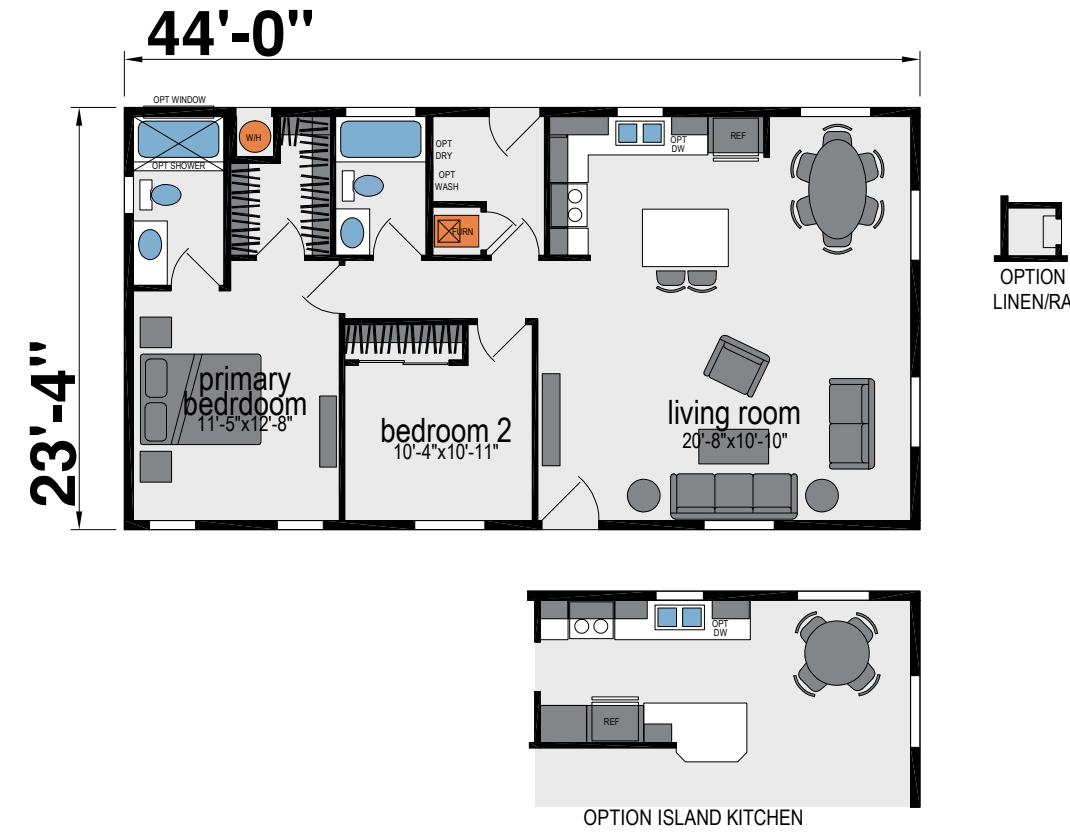
K610J

Three Bed | Two Bath | 946 Sq. Ft.



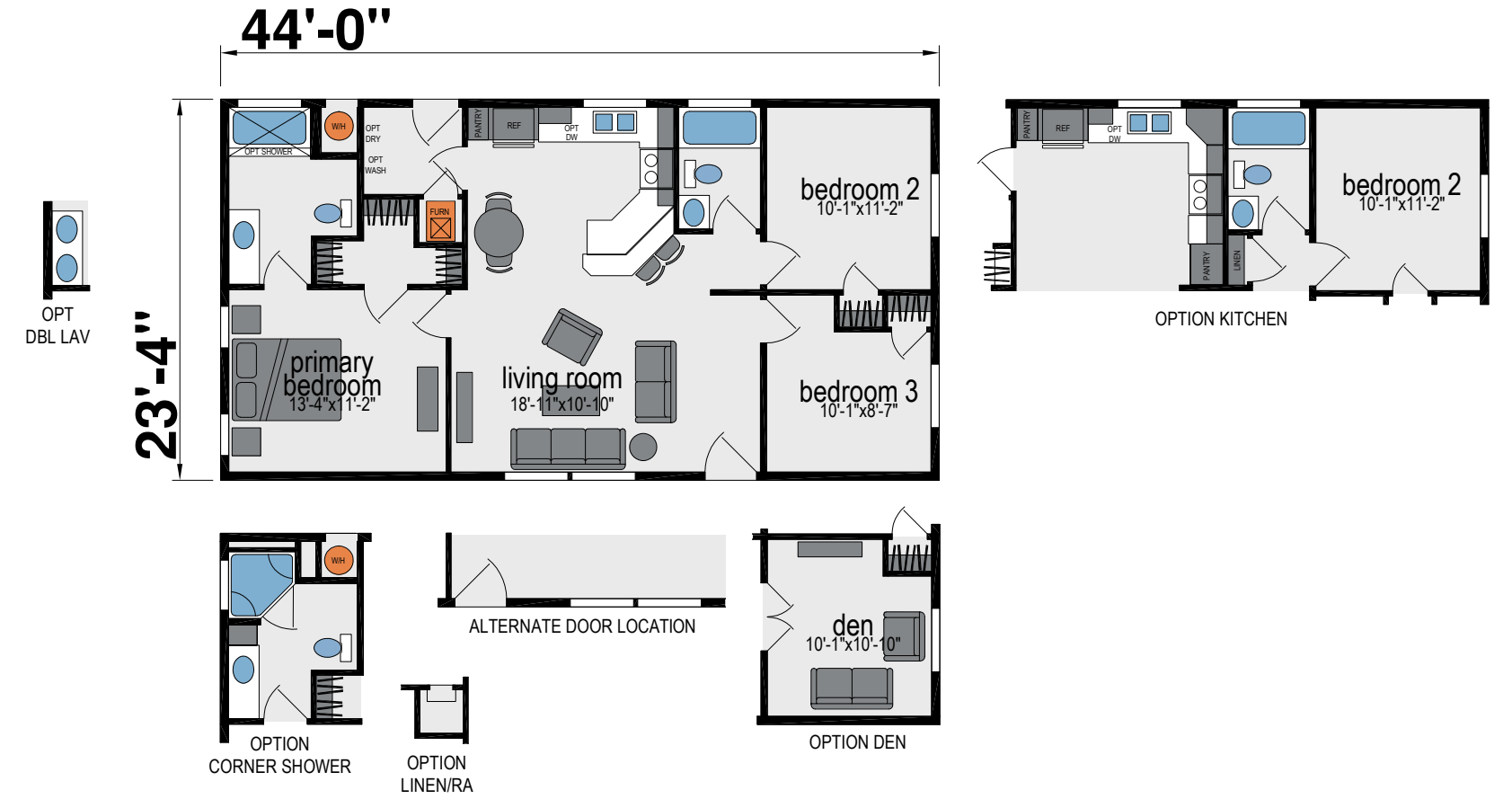
K604J

Two Bed | Two Bath | 1,026 Sq. Ft.



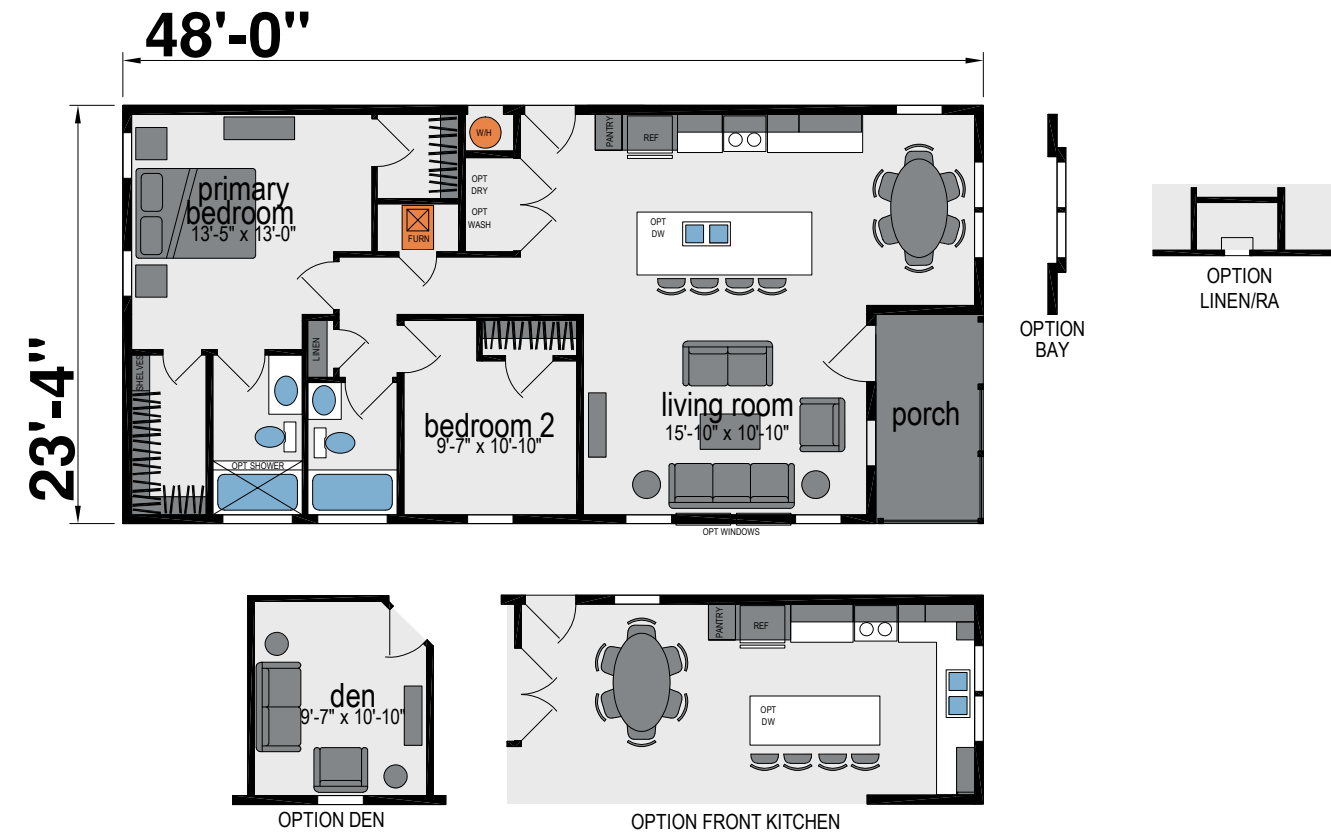
K620J

Three Bed | Two Bath | 1,026 Sq. Ft.



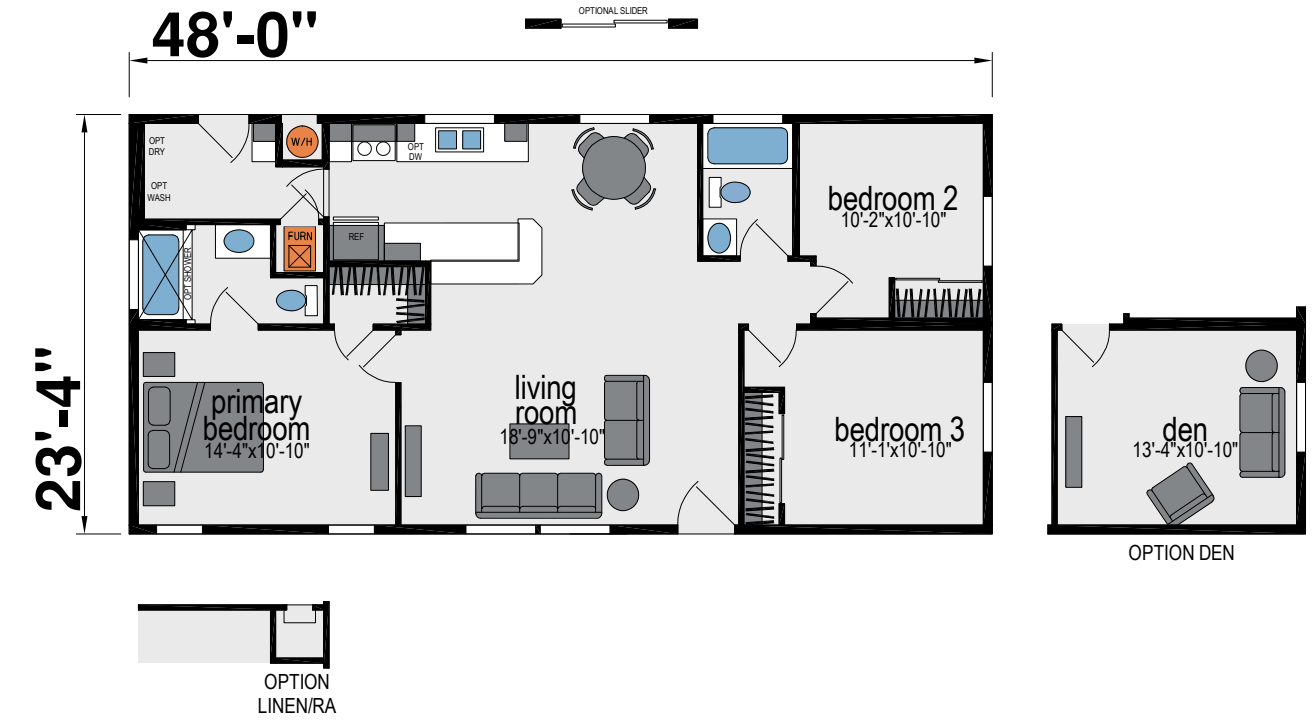
K603J

Two Bed | Two Bath | 1,050 Sq. Ft.



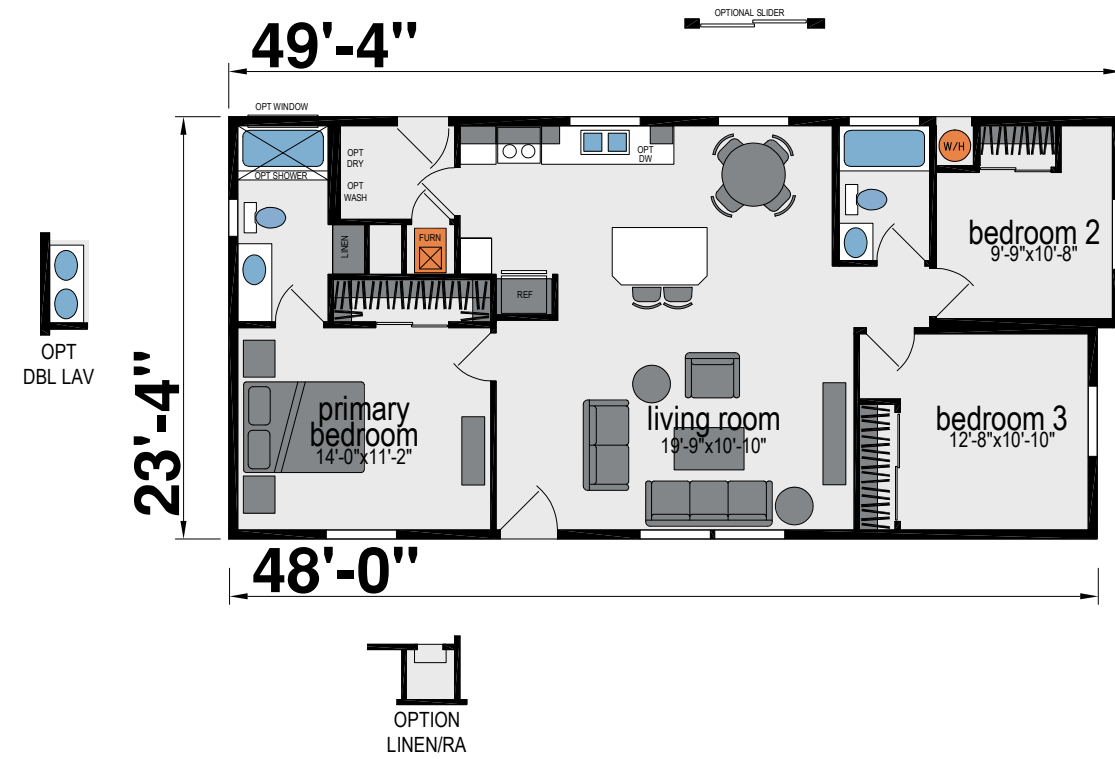
K600P

Three Bed | Two Bath | 1,120 Sq. Ft.



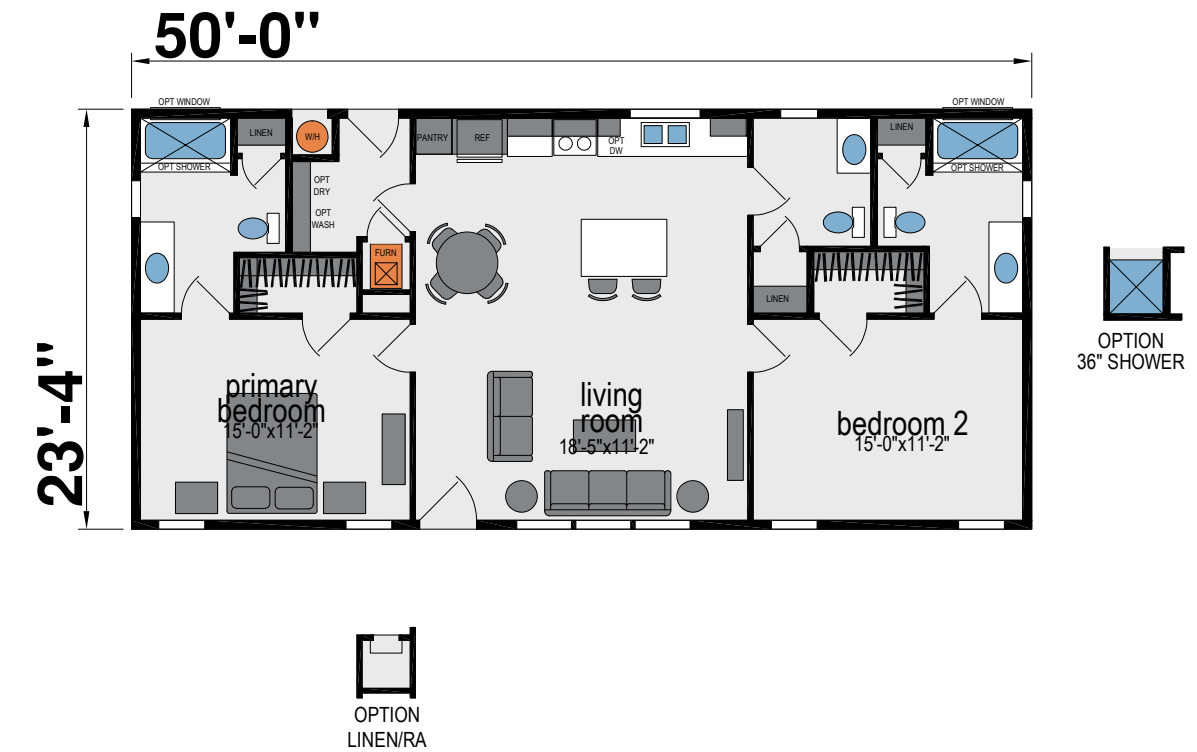
K613J

Three Bed | Two Bath | 1,135 Sq. Ft.



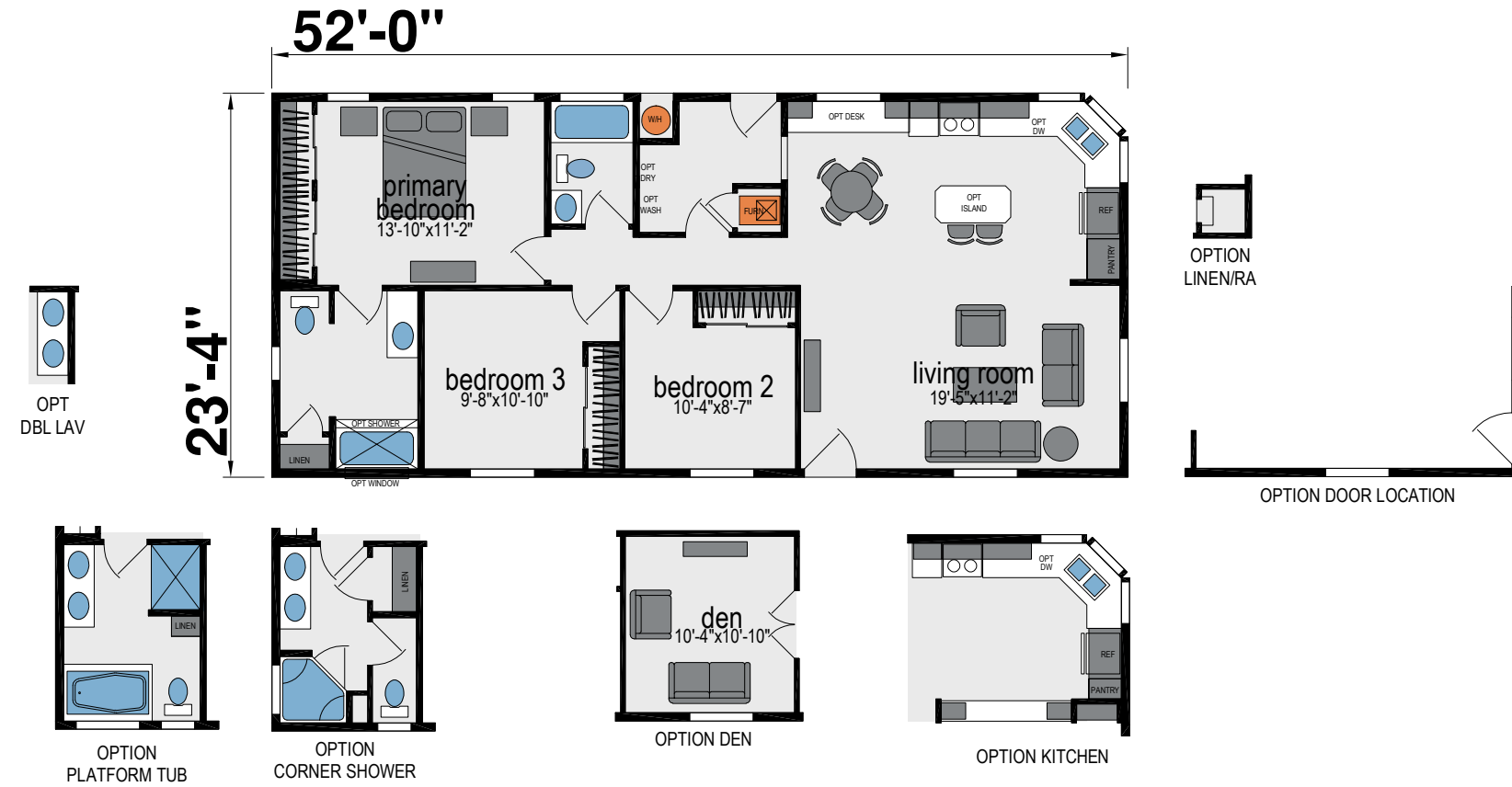
K615J

Two Bed | Two & 1/2 Bath | 1,166 Sq. Ft.



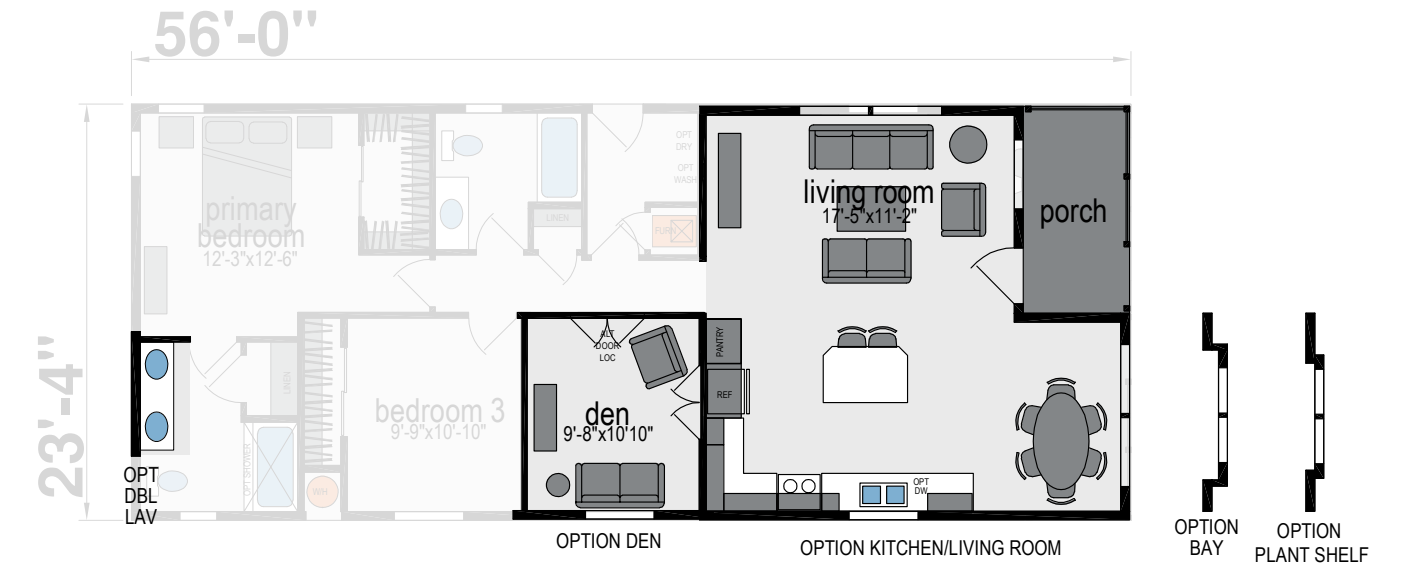
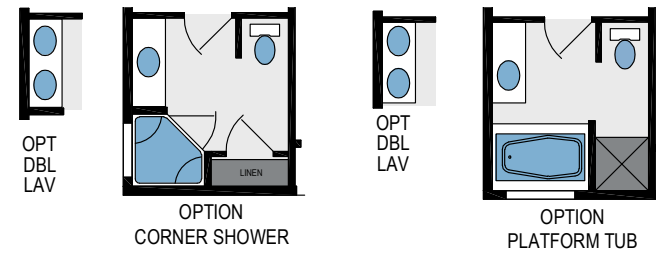
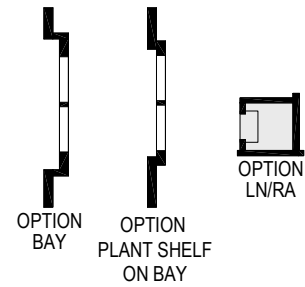
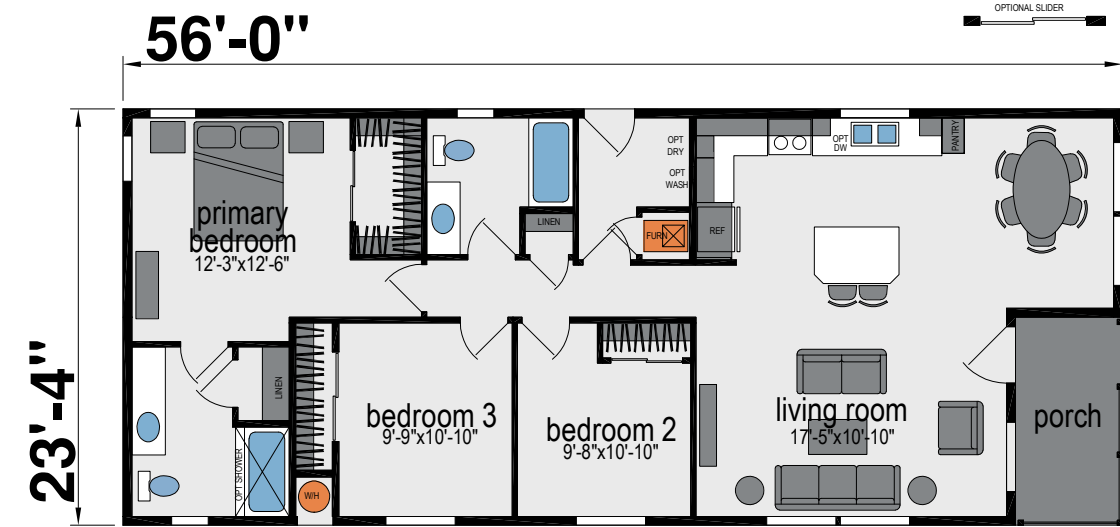
K605J

Three Bed | Two Bath | 1,210 sq. Ft.



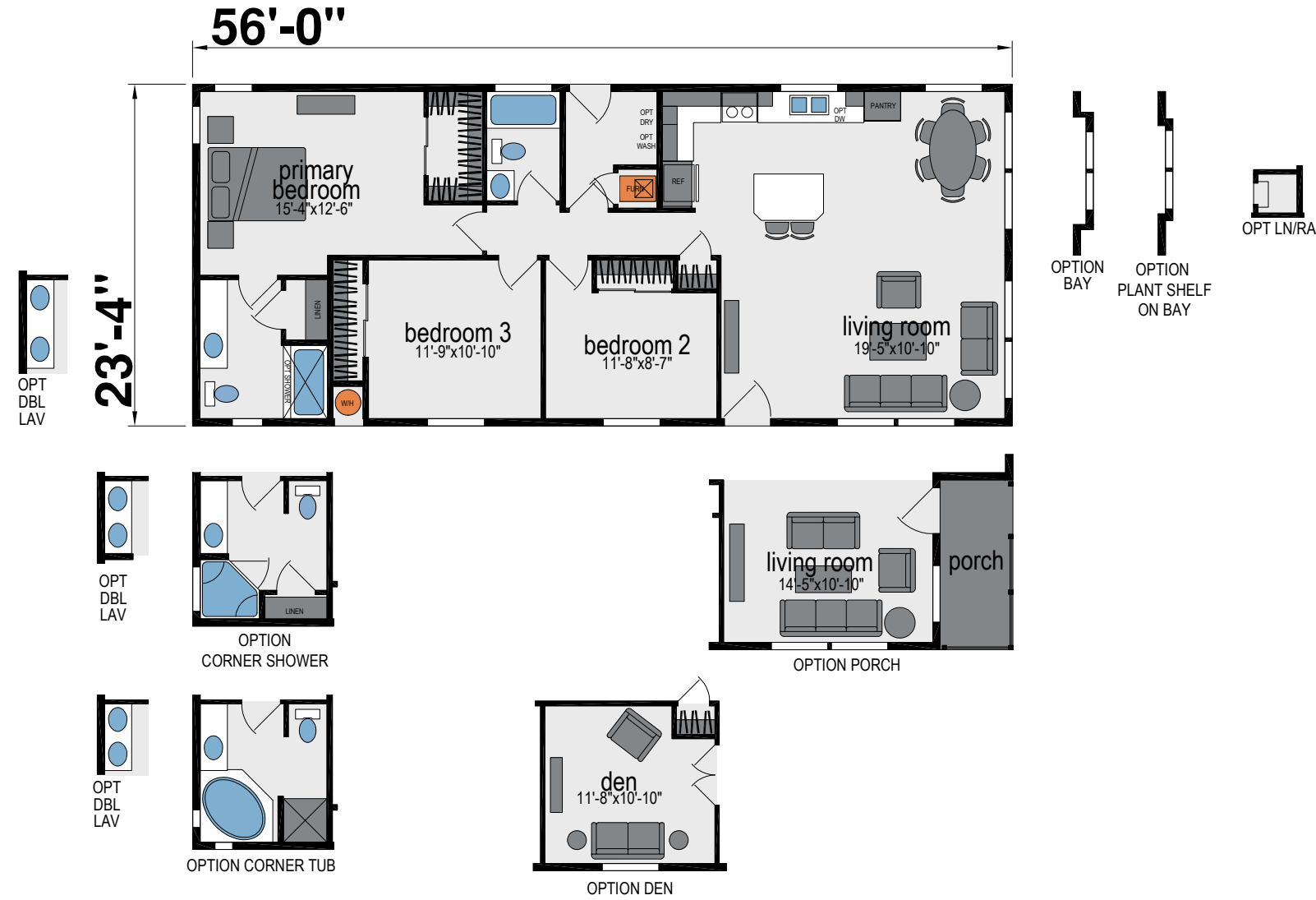
K619J

Three Bed | Two Bath | 1,236 sq. Ft.



K621J

Three Bed | Two Bath | 1,306 Sq. Ft.



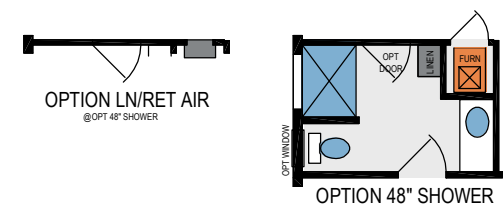
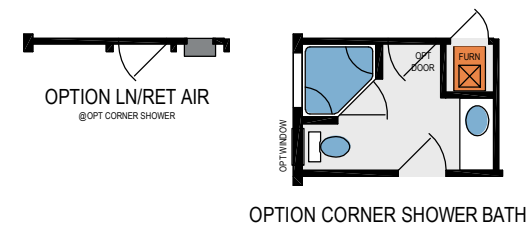
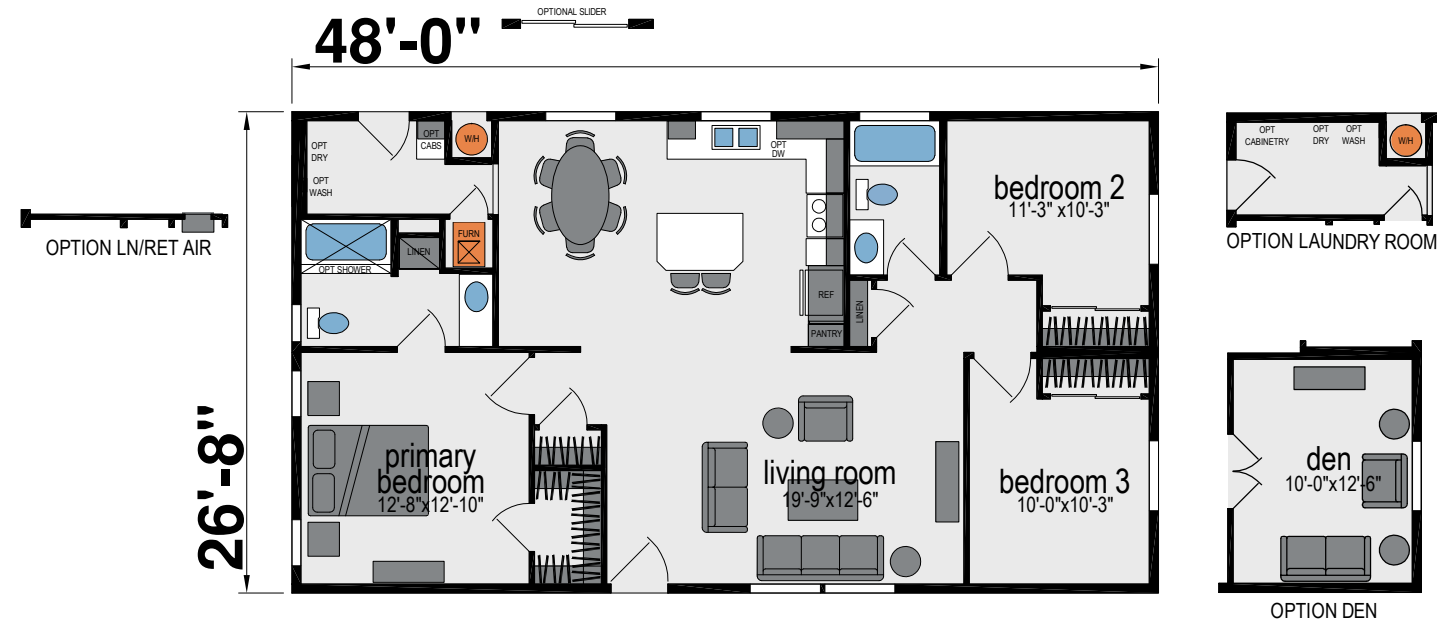
K770J

Three Bed | Two Bath | 1,173 Sq. Ft.



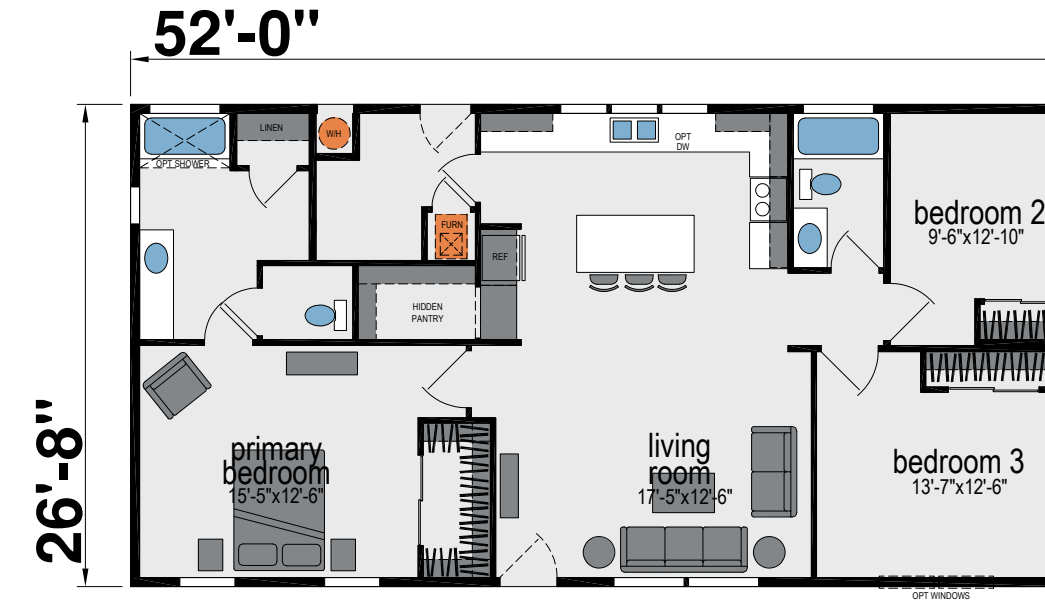
K755J

Three Bed | Two Bath | 1,280 sq. Ft.



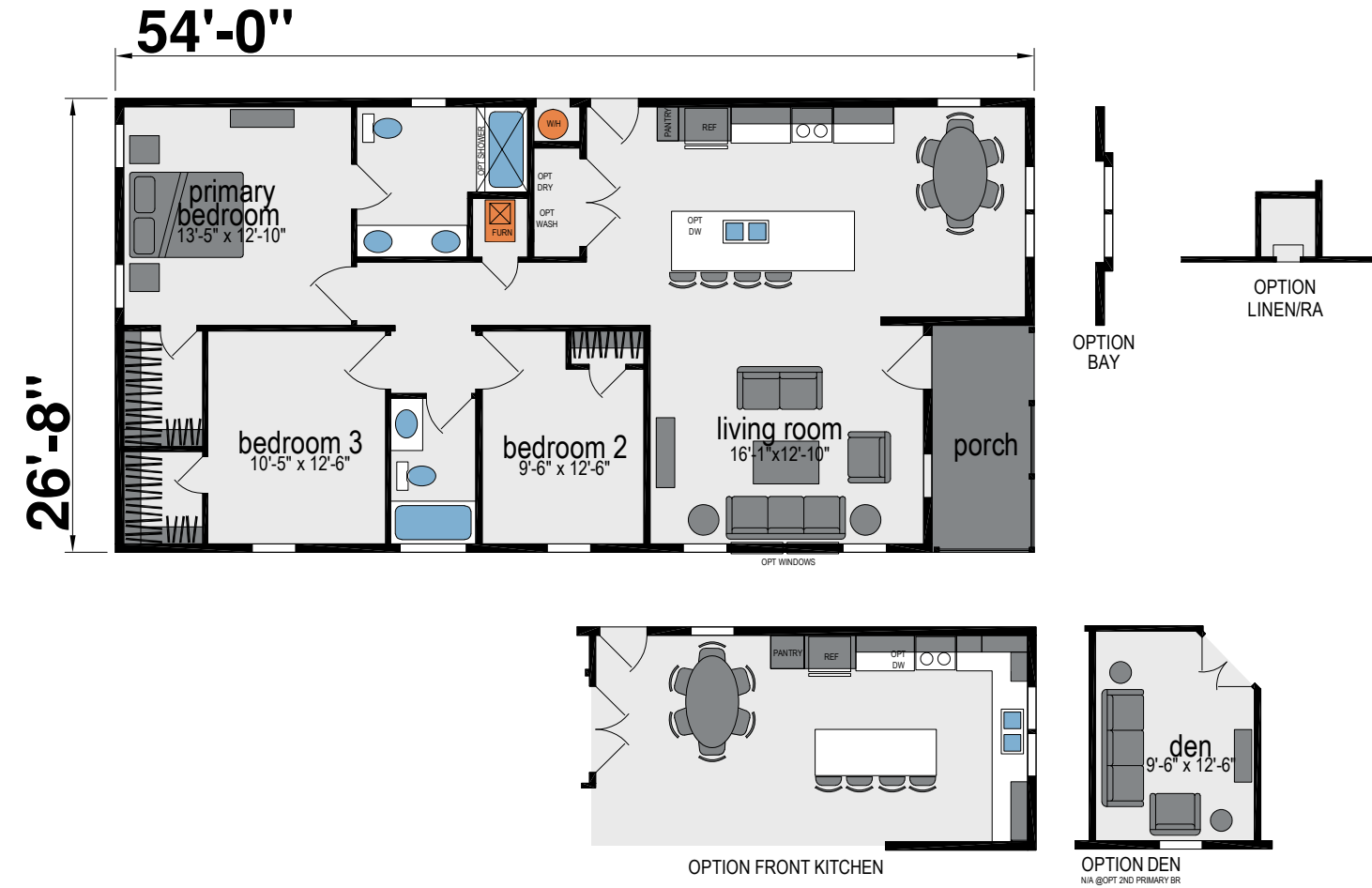
K704J

Three Bed | Two Bath | 1,386 sq. Ft.



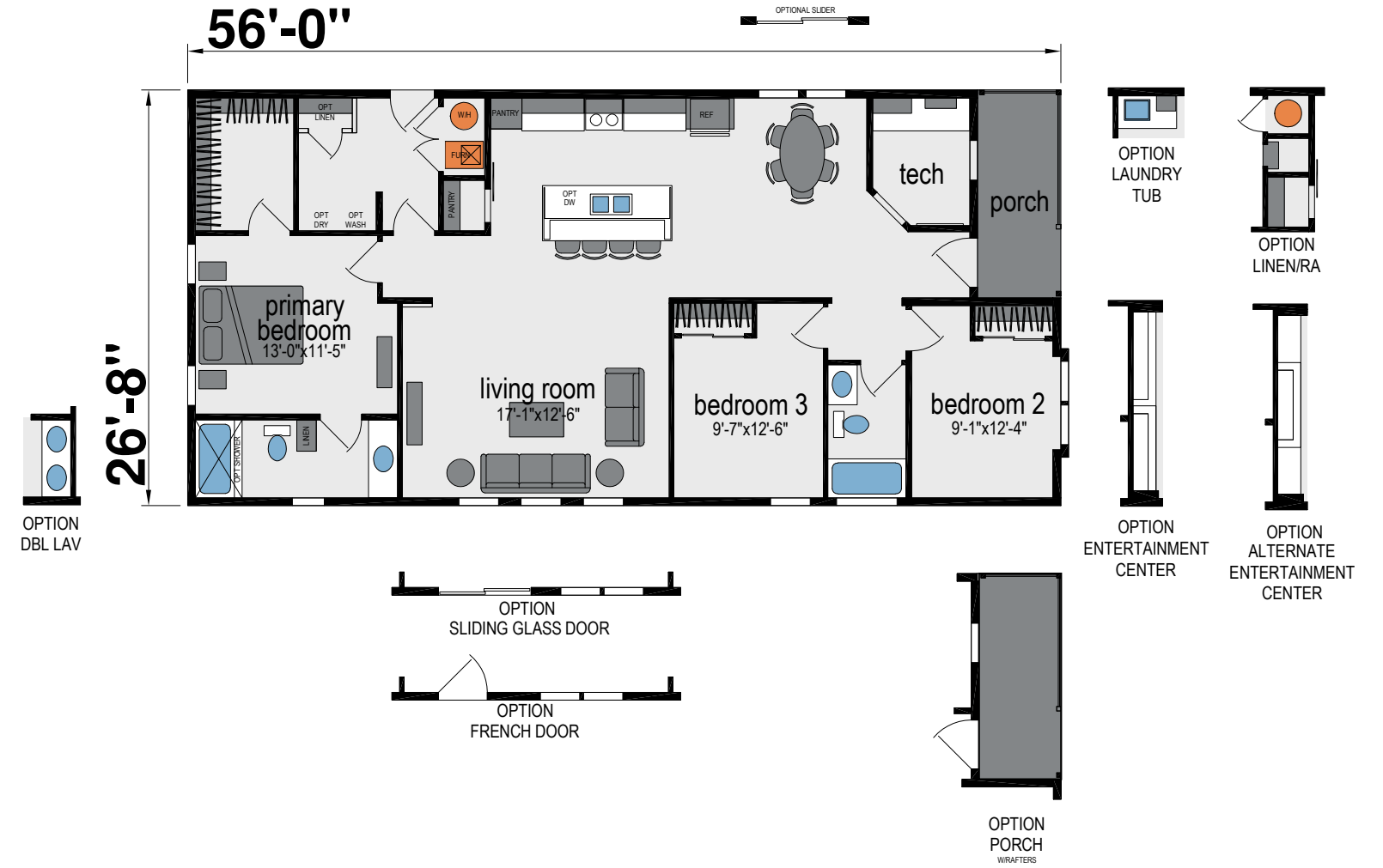
K706J

Three Bed | Two Bath | 1,360 sq. Ft.



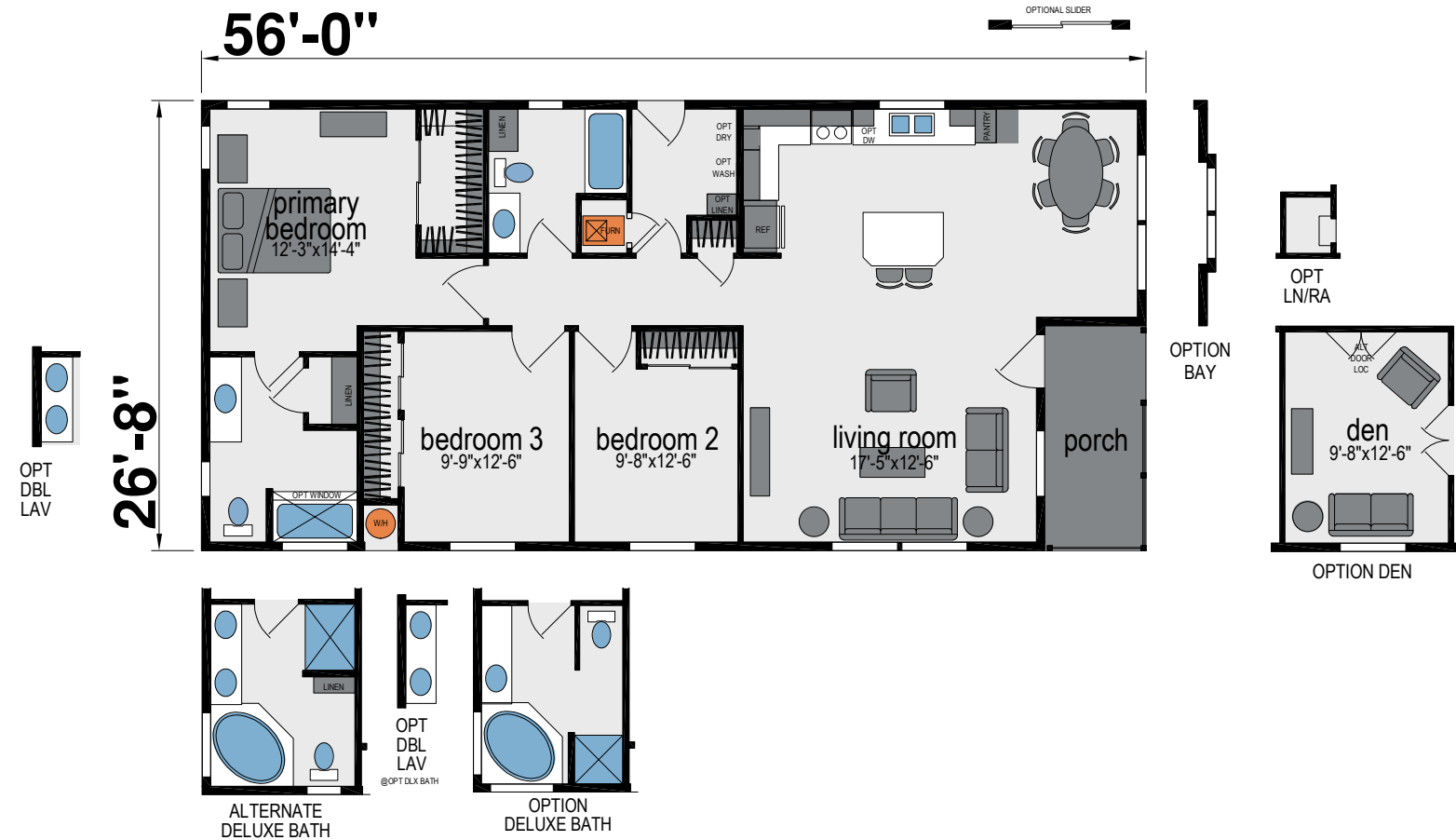
K701J

Three Bed | Two Bath | 1,425 sq. Ft.



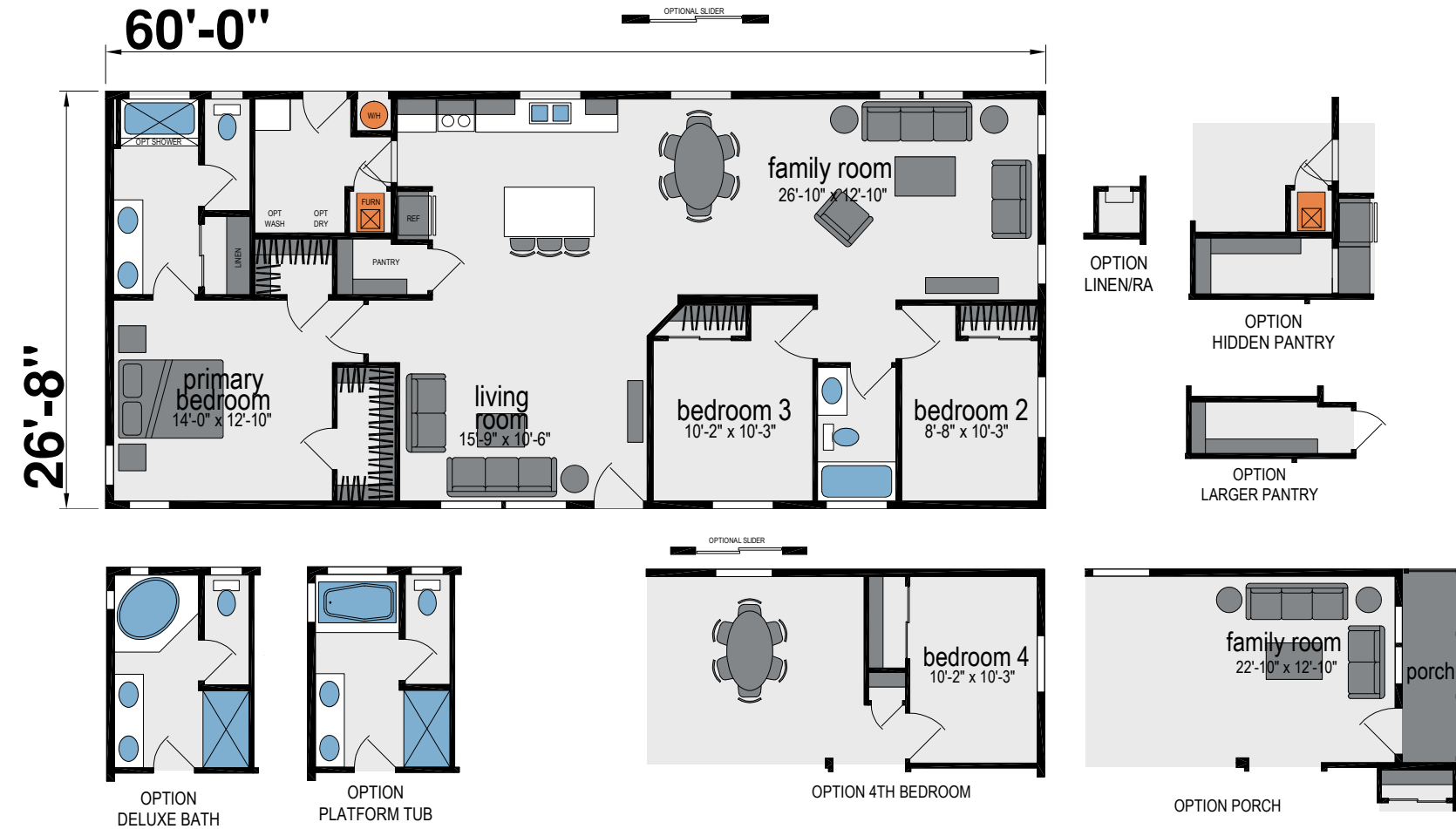
K719J

Three Bed | Two Bath | 1,413 Sq. Ft.



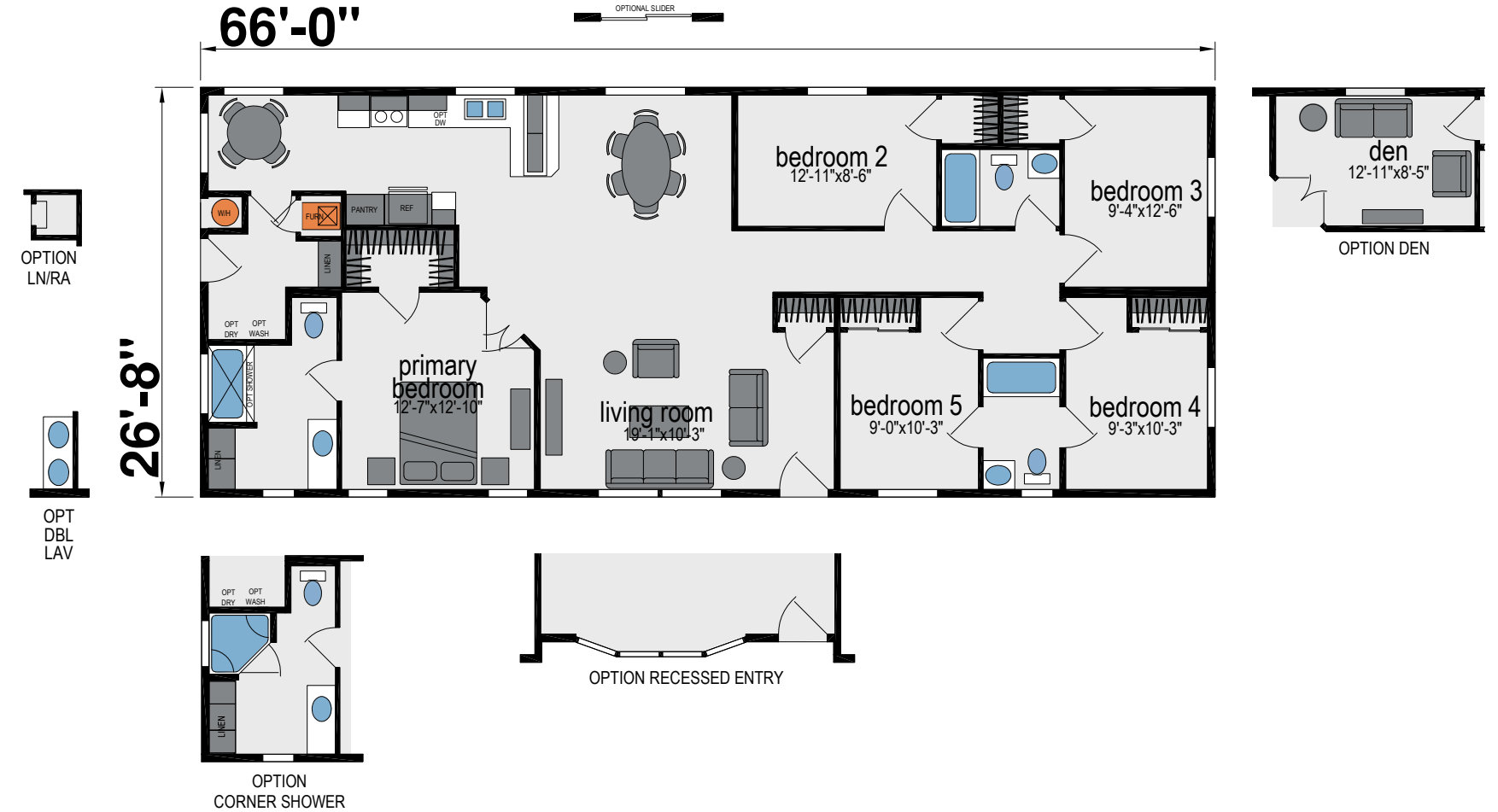
K735J

Three Bed | Two Bath | 1,600 sq. Ft.

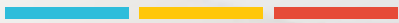


K730J

Five Bed | Three Bath | 1,760 sq. Ft.



Building Your Home to **GREEN** Standards



- Engineered for efficient use of materials
- 80% of construction waste reused or recycled
- Use of engineered lumber
- Low V.O.C. adhesives and paint
- Formaldehyde-free insulation
- Sealed and tested ducting system
- High efficiency toilets
- Efficient distribution plumbing system
- Mechanical fresh air ventilation system



K610J

Standard Features

Exterior

- ENERGY STAR®
- 2X6 Walls
- R-33-19-22 Insulation: Thermal Zone III
- Dual-Glazed Vinyl Framed Low-E Windows
- Vertical Cement Fiber Siding
- Architectural Roof Shingles
- 2X6 Floor Joists
- 5/8" Tongue & Groove OSB Floor Decking
- 36" 6-Panel Steel In-Swing Front Door with Deadbolt, Peephole & Knocker
- 32" 9-Lite Rear Door
- 12" Front & Rear Overhang
- Side Eaves (Model Specific)
- Semi-Gloss Exterior Paint
- 4" Exterior Window Trim Throughout

Interior

- 9' Flat Ceiling
- Drywall Throughout
- Hand-Finished Knock-Down Wall Texture

- White Low Sheen Interior Paint
- 42" Tall Hardwood Shaker Cabinets
- 2-Panel Interior Doors with 3-Mortised Nickel Hinges
- Single-Lever Handles
- By-Pass Wardrobe Doors Per Plan
- Shaw Stain Safety™ Treated Carpet & Rebond Pad
- Upgrade No-Wax Vinyl Floor Covering
- Vinyl Throughout in Single Wide Plans
- 2" Faux Wood Blinds with Faux Wood Valance
- Wood Closet Shelving & Pole
- Full Extension Ball Bearing Drawer Guides
- 3-1/4" Baseboard Molding
- 3-1/4" Door Casing
- Window Casing

Kitchen

- 42" Tall Overhead Cabinets
- Whirlpool® Stainless Steel Appliances
- 18.1 Cu. Ft. Frost-Free Refrigerator

- 30" Deluxe Gas Range with Electronic Ignition, Window, Clock & Timer
- 30" Range Hood Vent
- Stainless Steel Sink
- Single-Lever Faucet with Pull-Out Sprayer
- Bank of Drawers
- Laminate Countertop with Square Edge & 4" Backsplash

Electrical & Plumbing

- 100 Amp Exterior Electrical Panel Box
- 40-Gallon Gas Water Heater
- Toe-Kick Registers in Kitchen & Baths
- High Efficiency Furnace
- Plumbing for Washing Machine
- Plumbing for Gas Dryer
- Main Shut-Off Valve
- Exterior Light at Front & Rear Doors
- Deadbolt on Front & Rear Doors
- Silent Rocker Light Switches
- G.F.I. Protected Outlets in Kitchen & Baths

Baths

- 60" 1-Piece Fiberglass Tub/Shower with Single-Lever Diverter in Both Baths
- China Sink with Overflow & Pop-Up Drain
- Dual-Control Faucets
- Elongated Water-Saver Commode
- Vanity Strip Light
- Vanity Mirror
- Exhaust Fan
- 36" High Lavy Countertop

- Laminate Countertop with Square Edge & 4" Backsplash
- Ventilated Window Per Plan
- Towel Bar & Tissue Holder
- Linen Closet (Model Specific)

Popular Options

- Upgrade FHA-Approved Carpet & Pad
- Ceiling Crown Molding
- Drawer-Over-Door Kitchen Cabinets

Amber Cove Series

- Electric, Wood or Gas Burning Fireplace
- Granite, Quartz or Solid Surface Countertops
- Upgrade Exterior



Due to continuous product development and improvement, prices, specifications, and materials are subject to change without notice or obligation. Square footage and other dimensions are approximate. Exterior images may be artist renderings and are not intended to be an accurate representation of the home. Renderings, photos and floor plans may be shown with optional features or third-party additions.

SKYLINE®



Contact Us Today!

Member:



499 W Esplanade Ave | San Jacinto, CA 92583 | (951) 654-9321