

Sunset Ridge

S E R I E S



SKYLINE®

Sunset Ridge Series

Home is where the heart is, where memories are created, and where life's most important moments are celebrated. Since 1951, Skyline Homes has grown to be one of the most recognized factory-built home builders; a recognition earned by consistently delivering style, quality, and craftsmanship in every home we build. From start to finish, we are involved in your home every step of the way.

At Skyline Homes, we don't just build homes, we build dreams. We design and build our homes with people in mind. From contemporary style to traditional design, we are committed to providing features and finishes that can be enjoyed for a lifetime. We promise you will feel the difference of a Skyline Home. It's the feeling of comfort; the feeling of coming home to a place you truly love.



K943J (p. 35)



K583J (p.32)



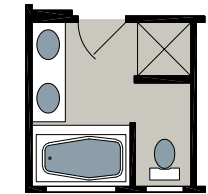
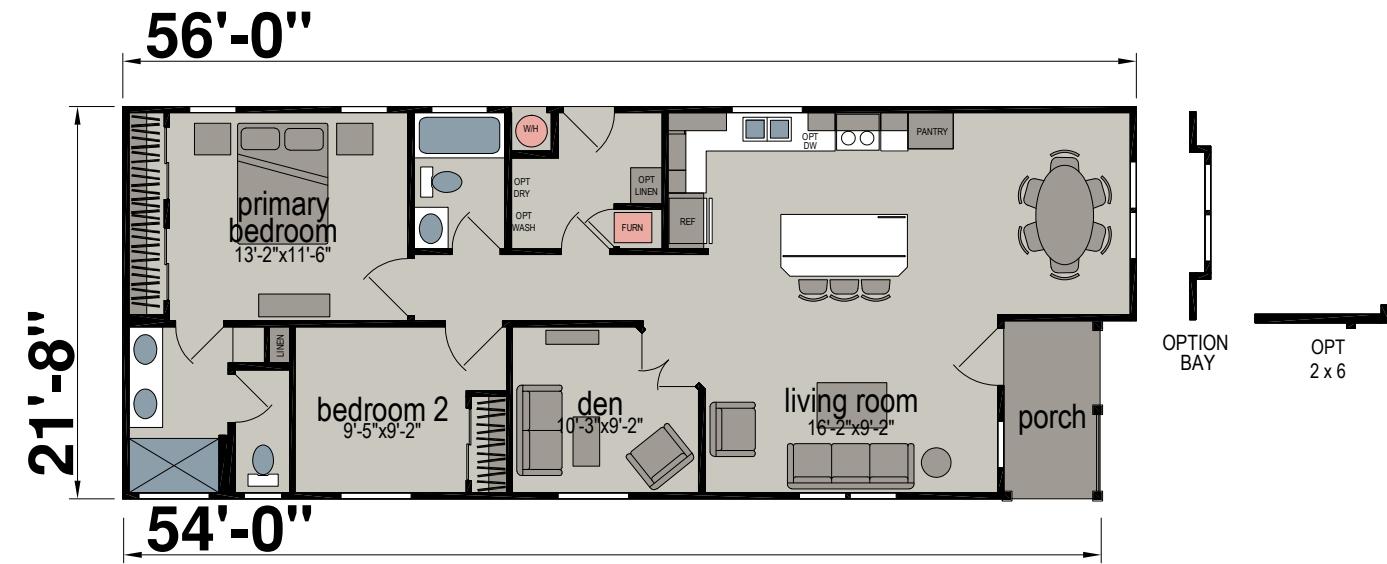
K943J (p.35)



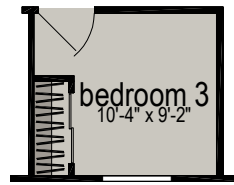
K539J (p. 24)

K300K

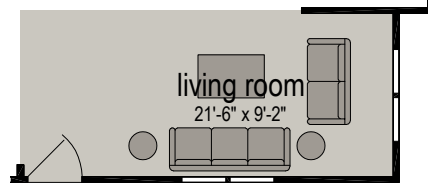
Two Bed | Two Bath | 1,141 Sq. Ft.



OPTION GLAMOUR BATH



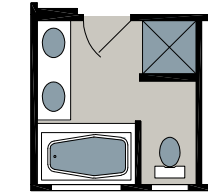
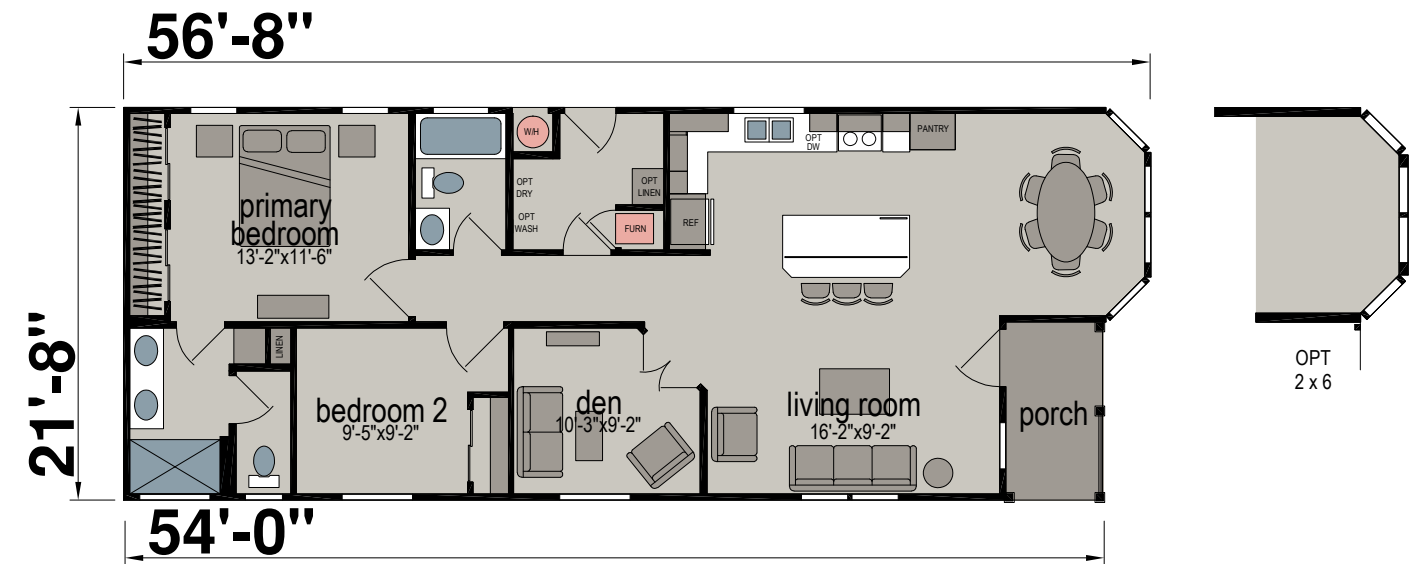
OPTION 3RD BEDROOM



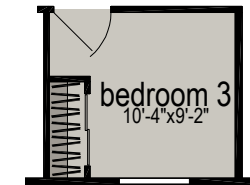
OPTION PORCH DELETE

K300H

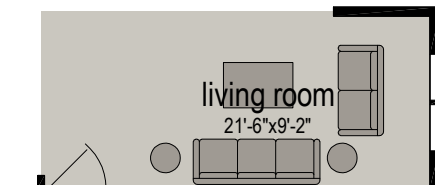
Two Bed | Two Bath | 1,143 Sq. Ft.



OPTION GLAMOUR BATH



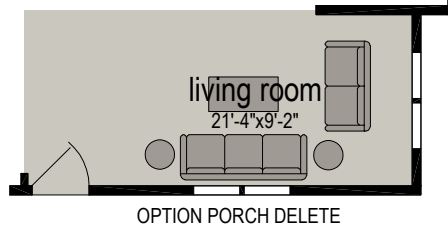
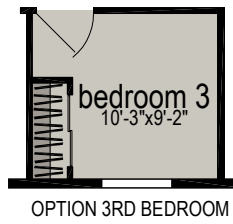
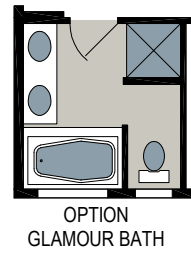
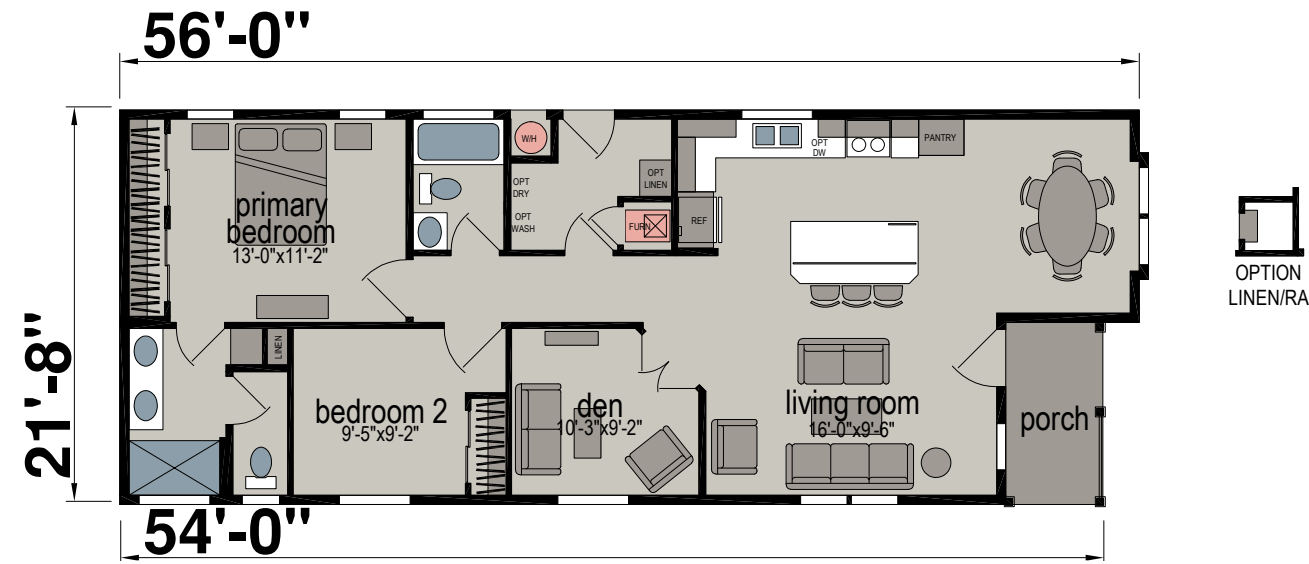
OPTION 3RD BEDROOM



OPTION PORCH DELETE

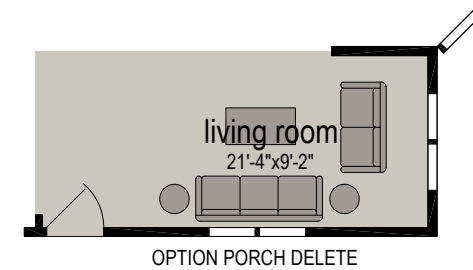
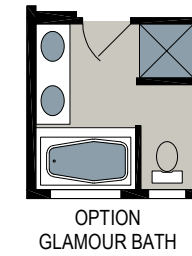
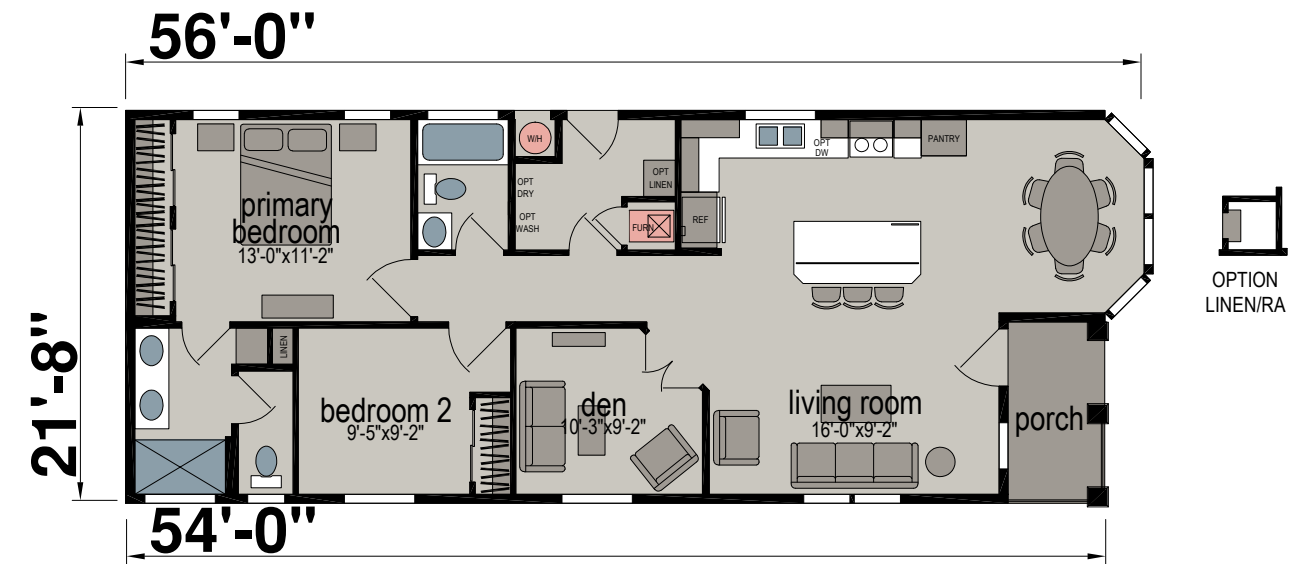
K300J

Two Bed | Two Bath | 1,192 Sq. Ft.



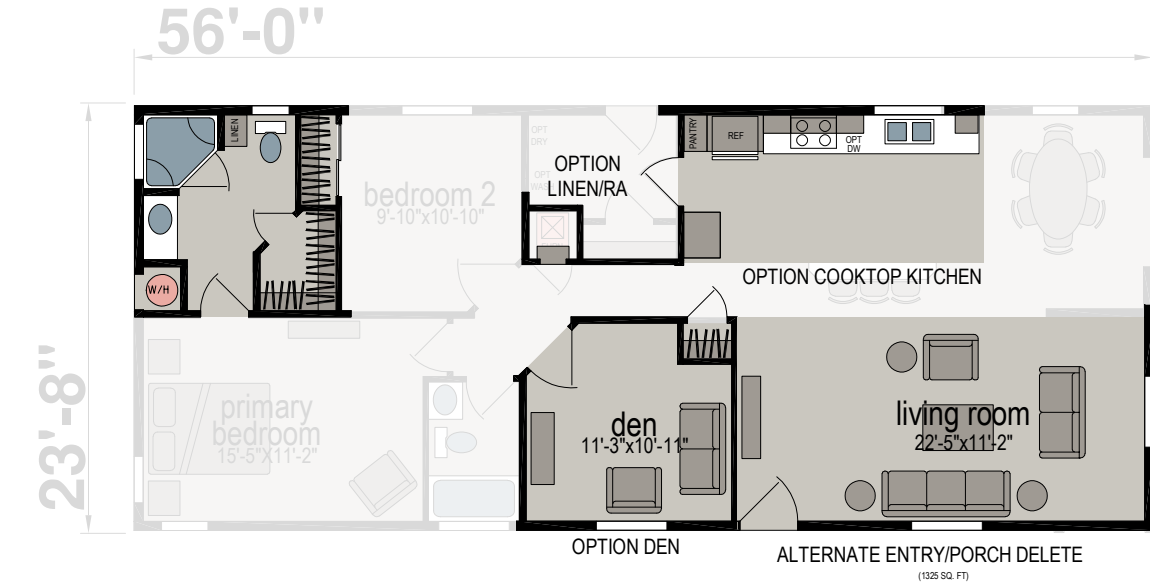
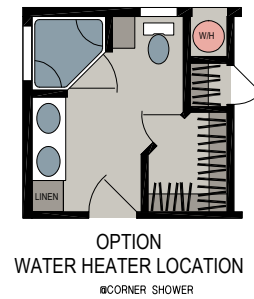
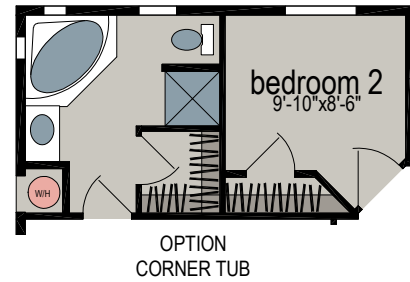
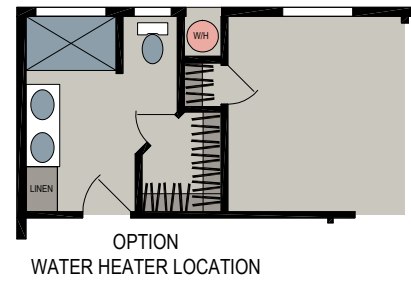
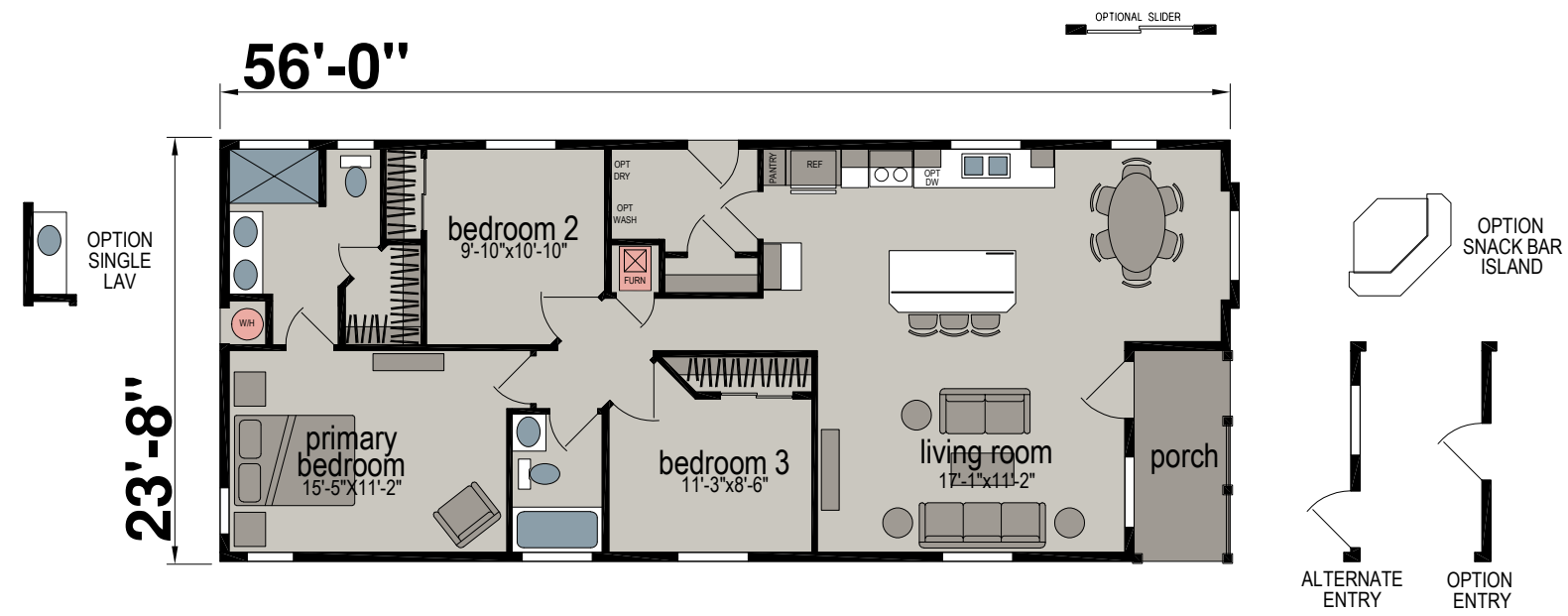
K300K

Two Bed | Two Bath | 1,208 Sq. Ft.



K117J

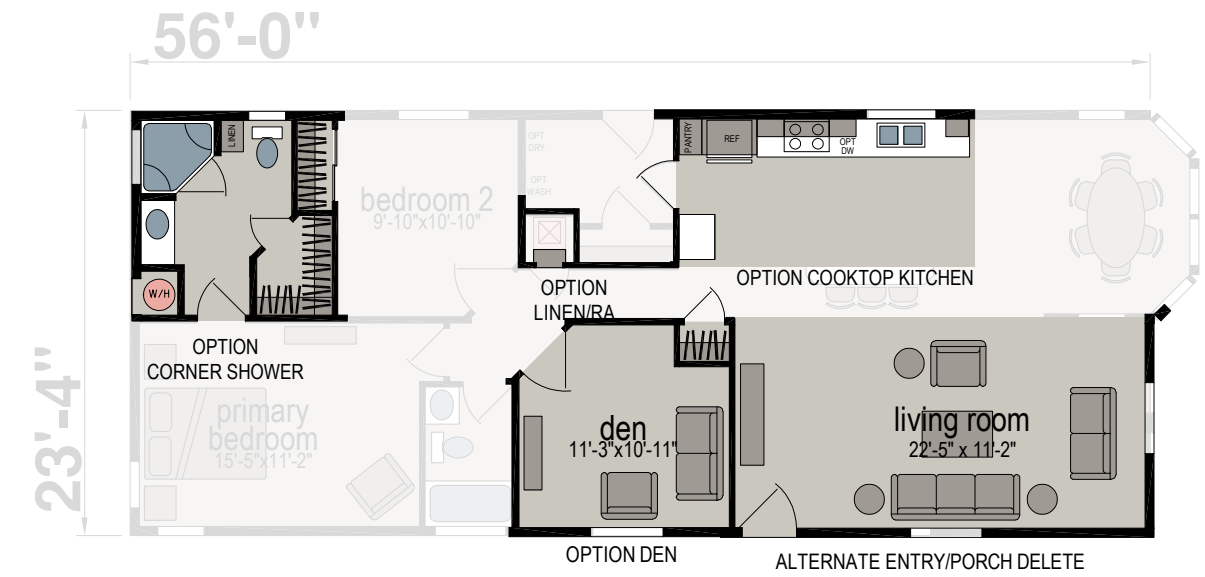
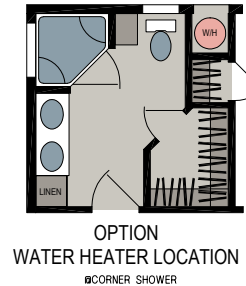
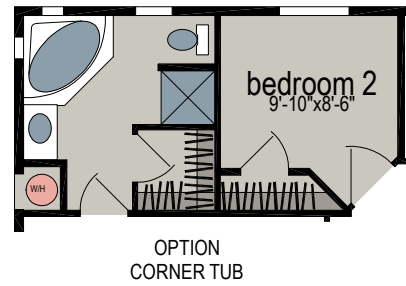
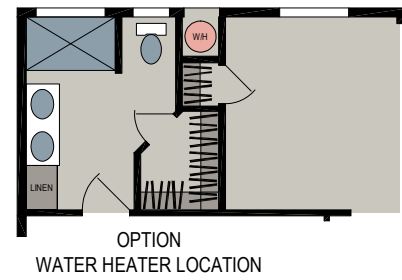
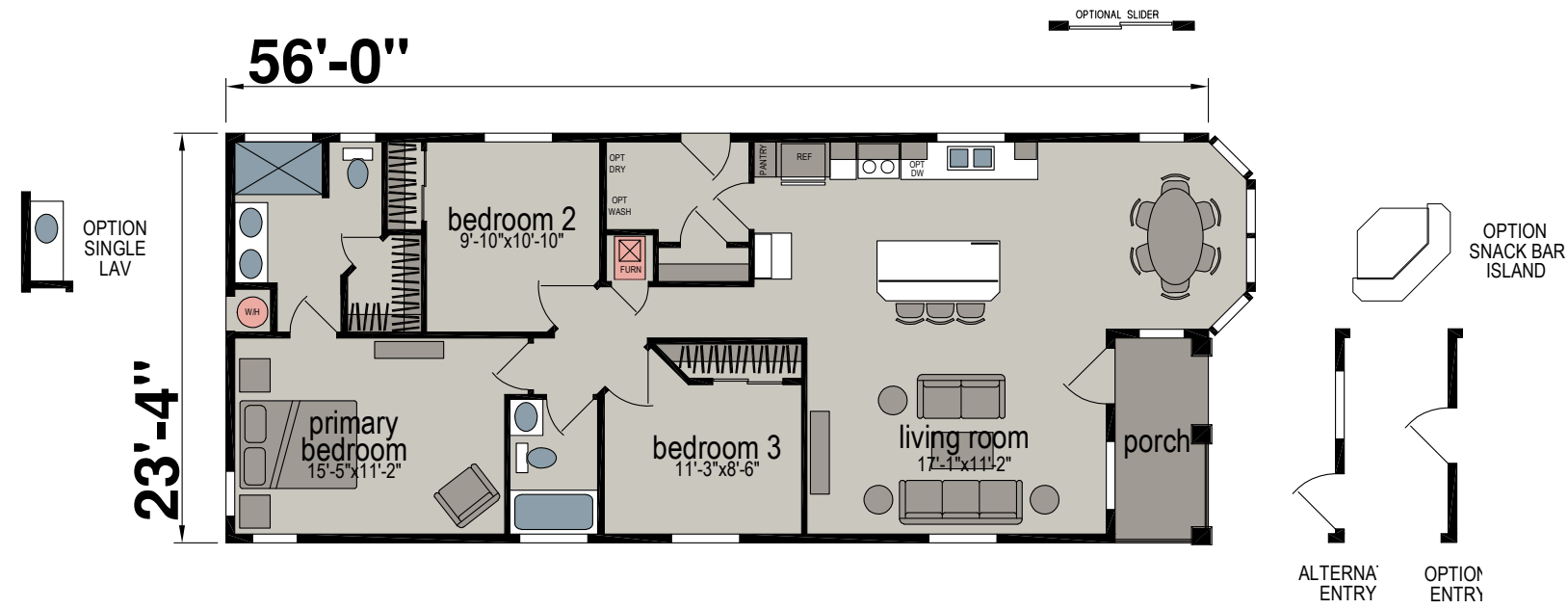
Three Bed | Two Bath | 1,247 Sq. Ft.



Shown with Optional Exterior

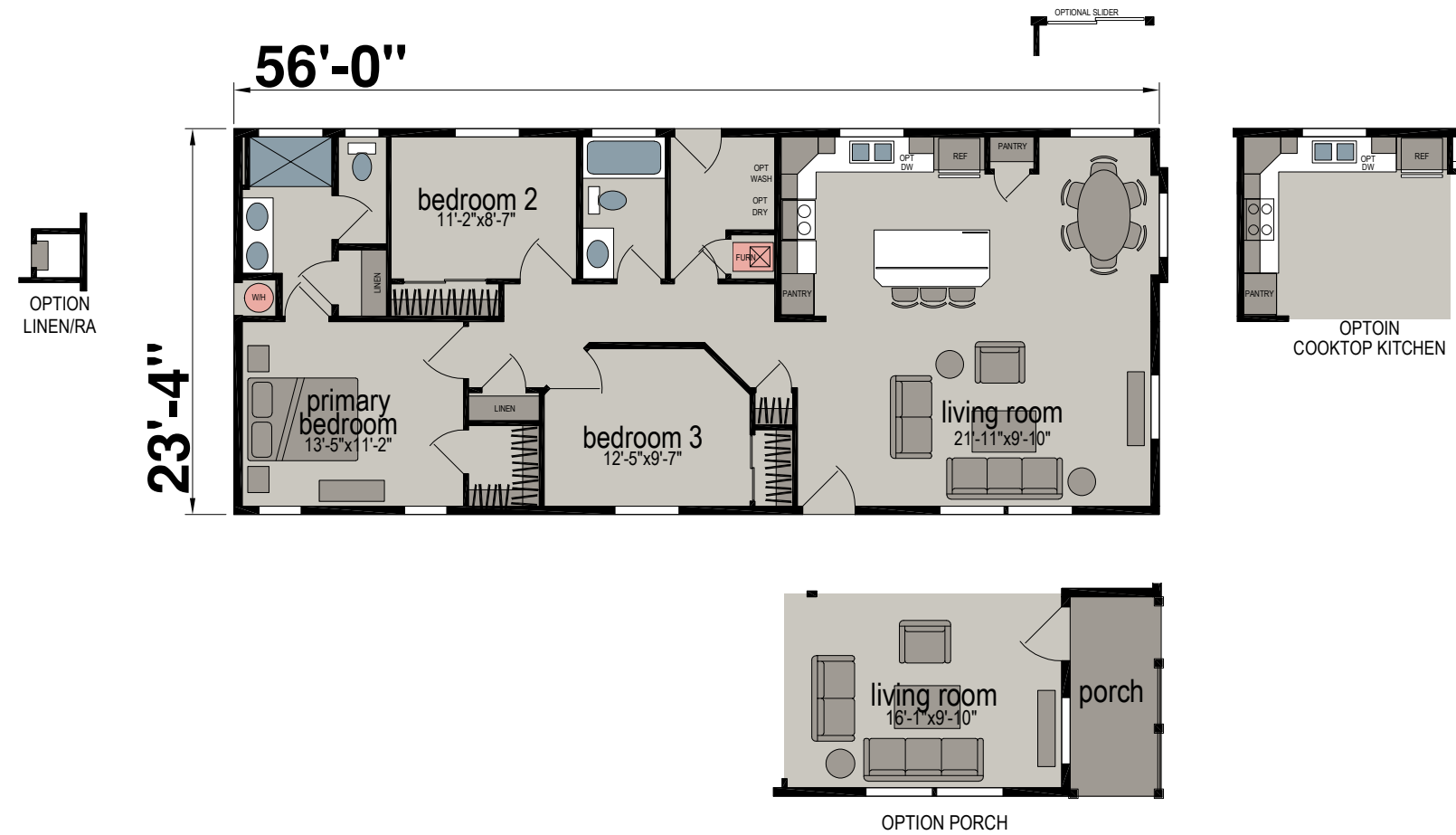
K117K

Three Bed | Two Bath | 1,247 Sq. Ft.



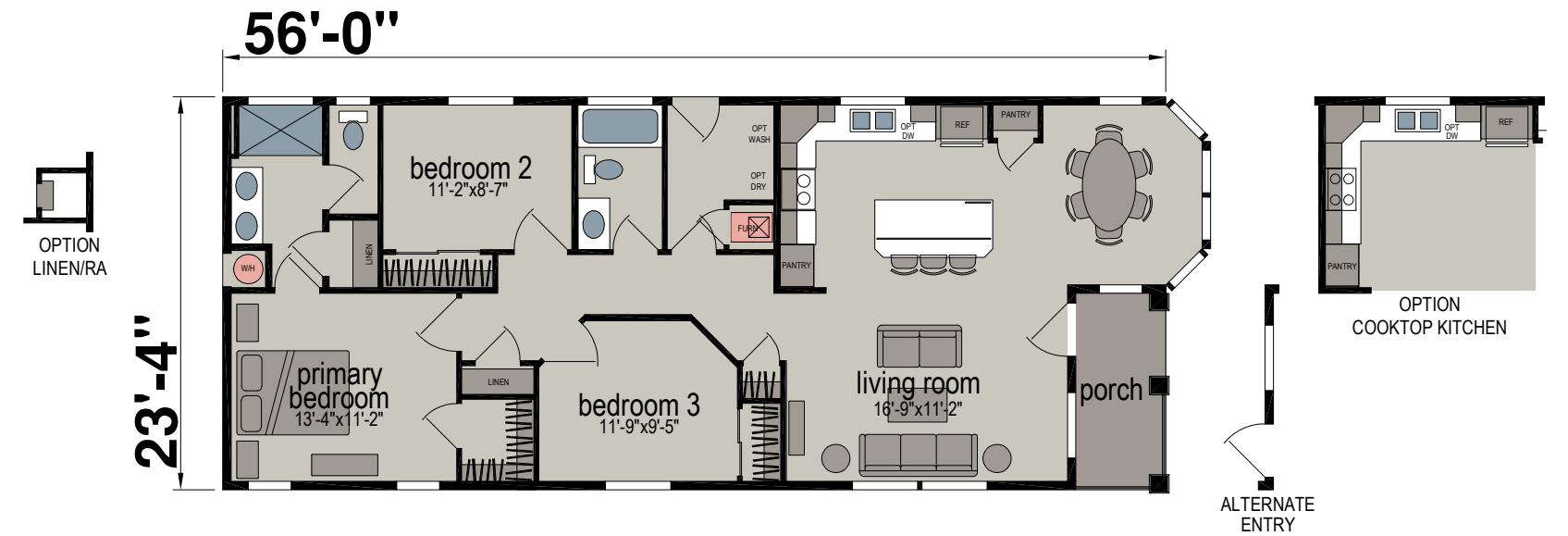
K139J

Three Bed | Two Bath | 1,310 Sq. Ft.



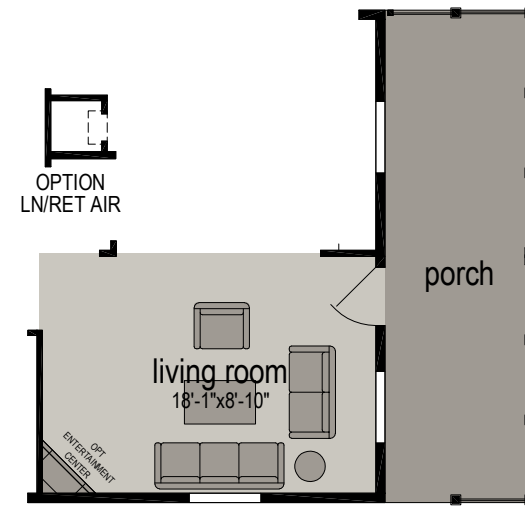
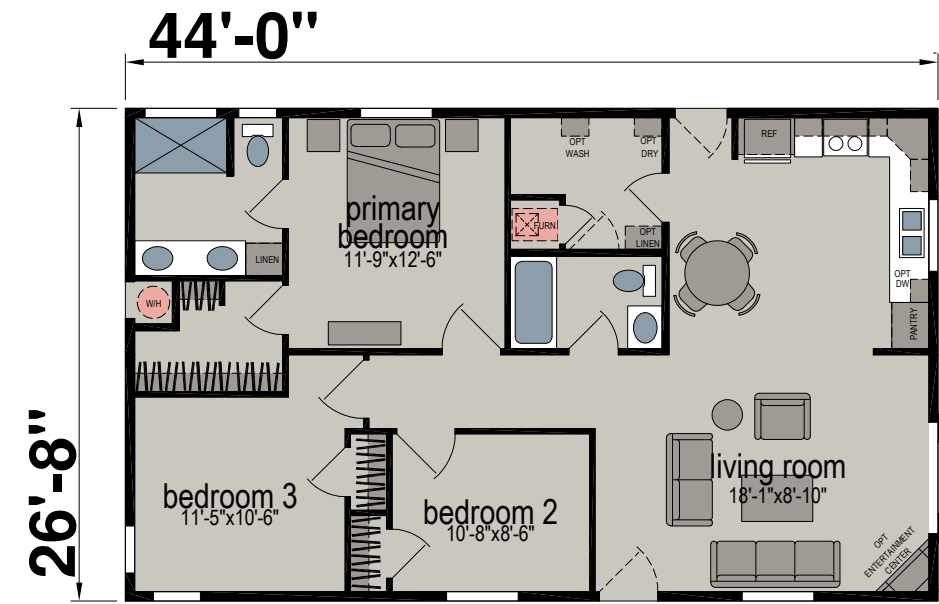
K139K

Three Bed | Two Bath | 1,269 Sq. Ft.

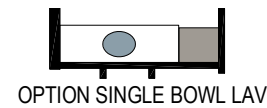


K500J

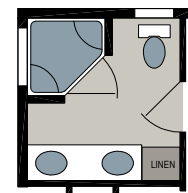
Three Bed | Two Bath | 1,176 Sq. Ft.



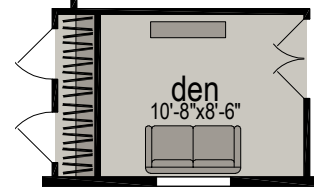
OPTION PORCH / ALTERNATE ENTRY



OPTION SINGLE BOWL LAV



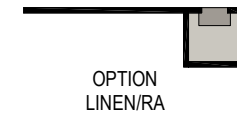
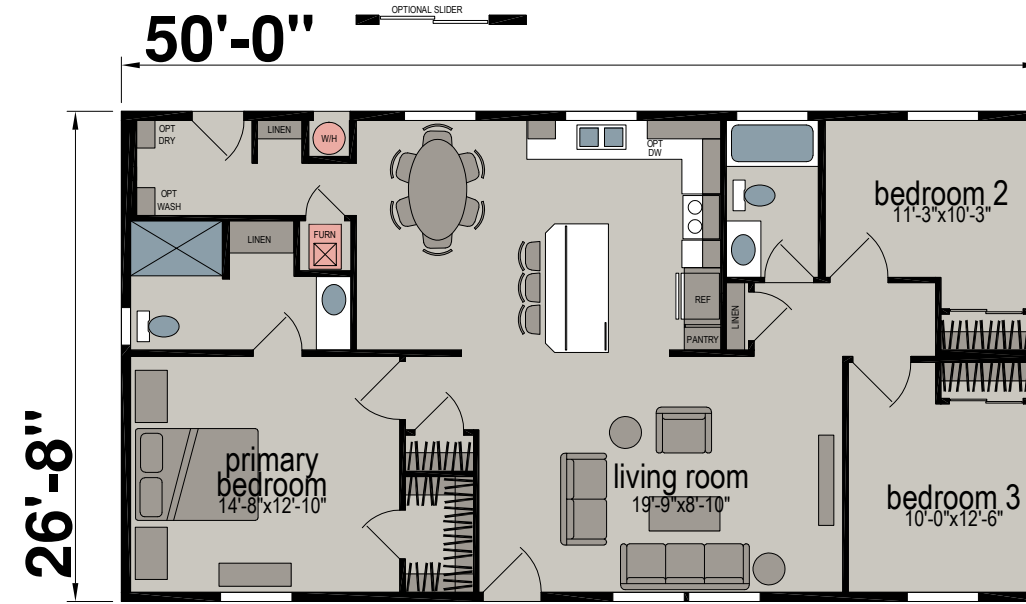
OPTION CORNER SHOWER



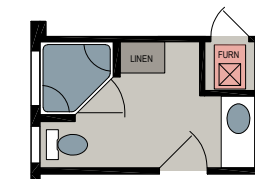
OPTION DEN

K536J

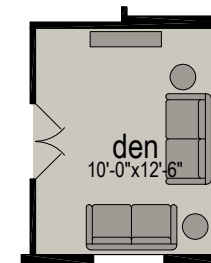
Three Bed | Two Bath | 1,333 Sq. Ft.



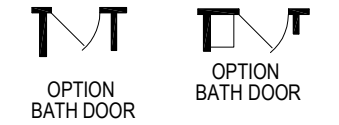
OPTION LINEN/RA



OPTION CORNER SHOWER



OPTION DEN



OPTION BATH DOOR

OPTION BATH DOOR



ALTERNATE DOOR LOCATION

K530J

Three Bed | Two Bath | 1,319 Sq. Ft.



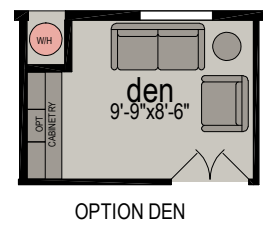
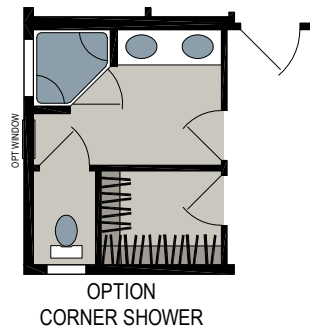
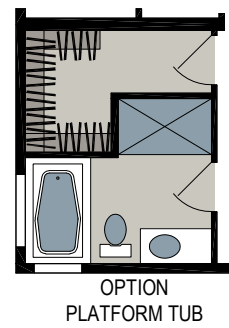
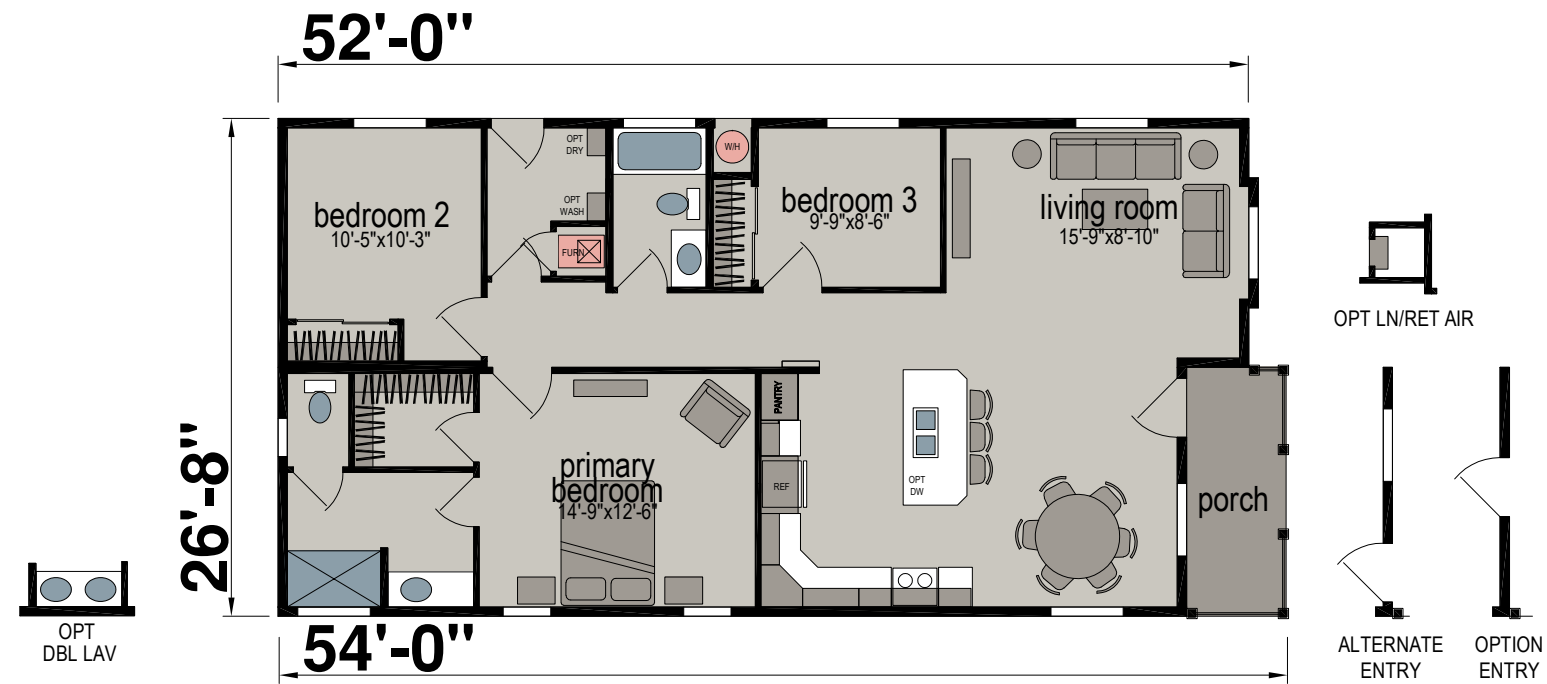
K530K

Three Bed | Two Bath | 1,345 Sq. Ft.



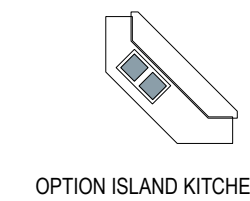
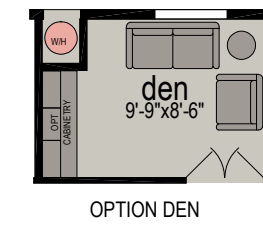
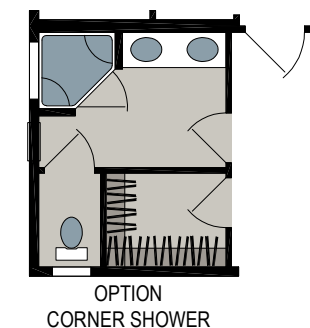
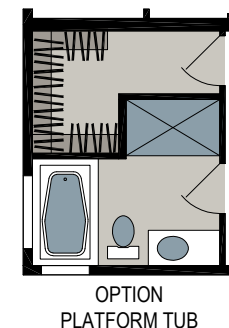
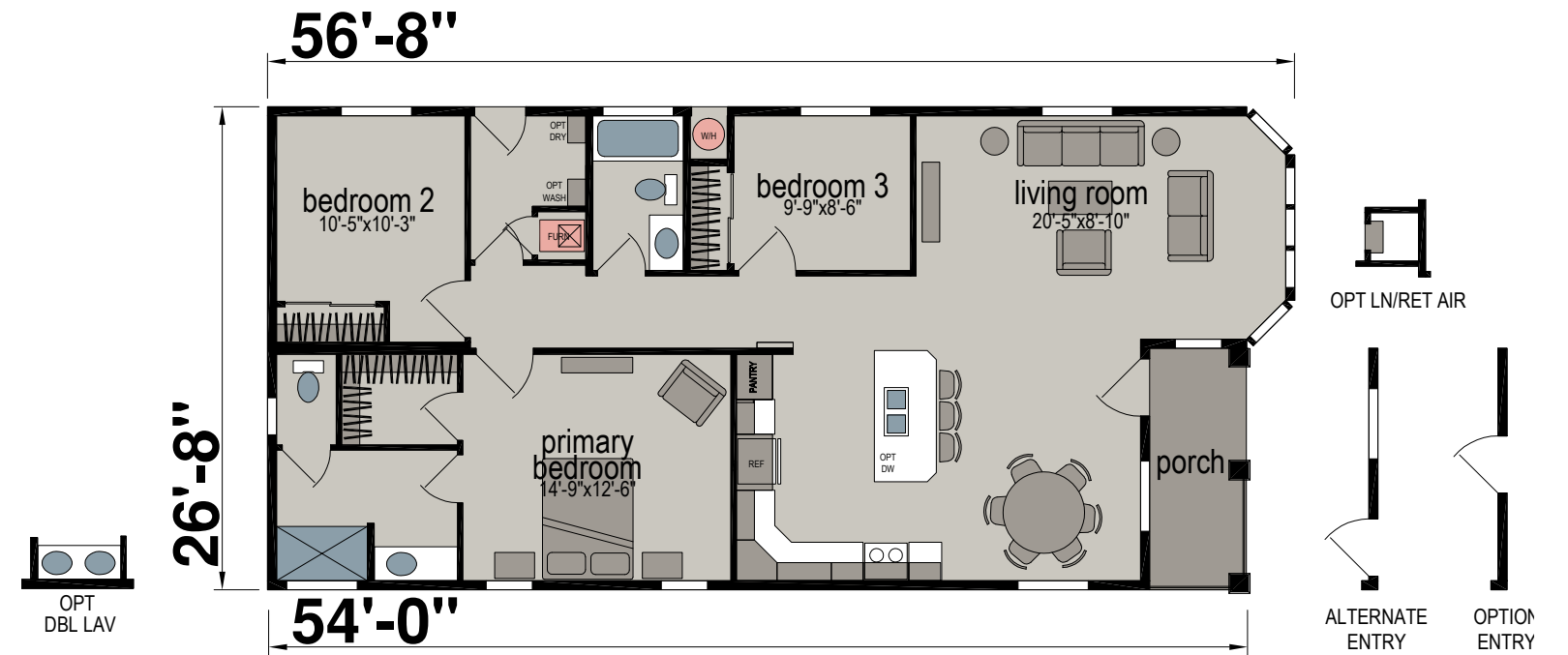
K594J

Three Bed | Two Bath | 1,345 Sq. Ft.



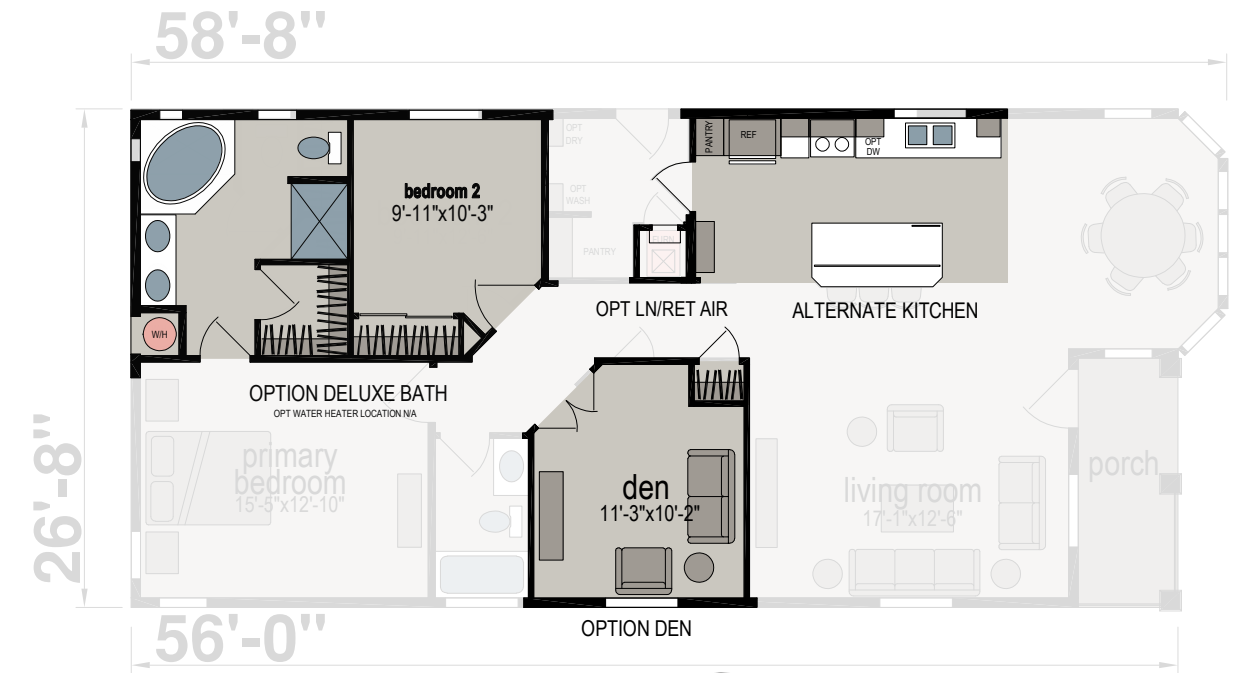
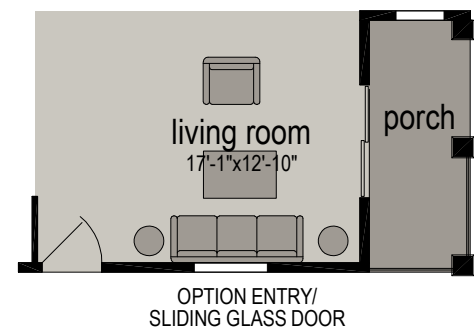
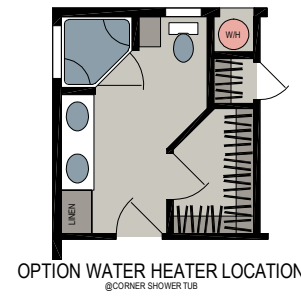
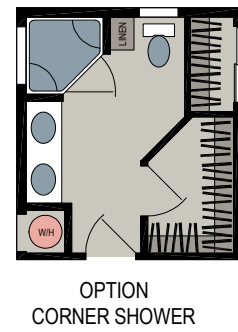
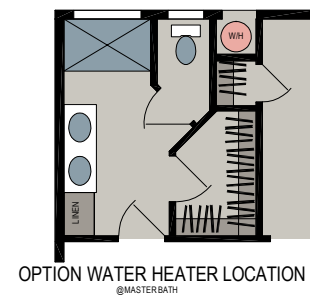
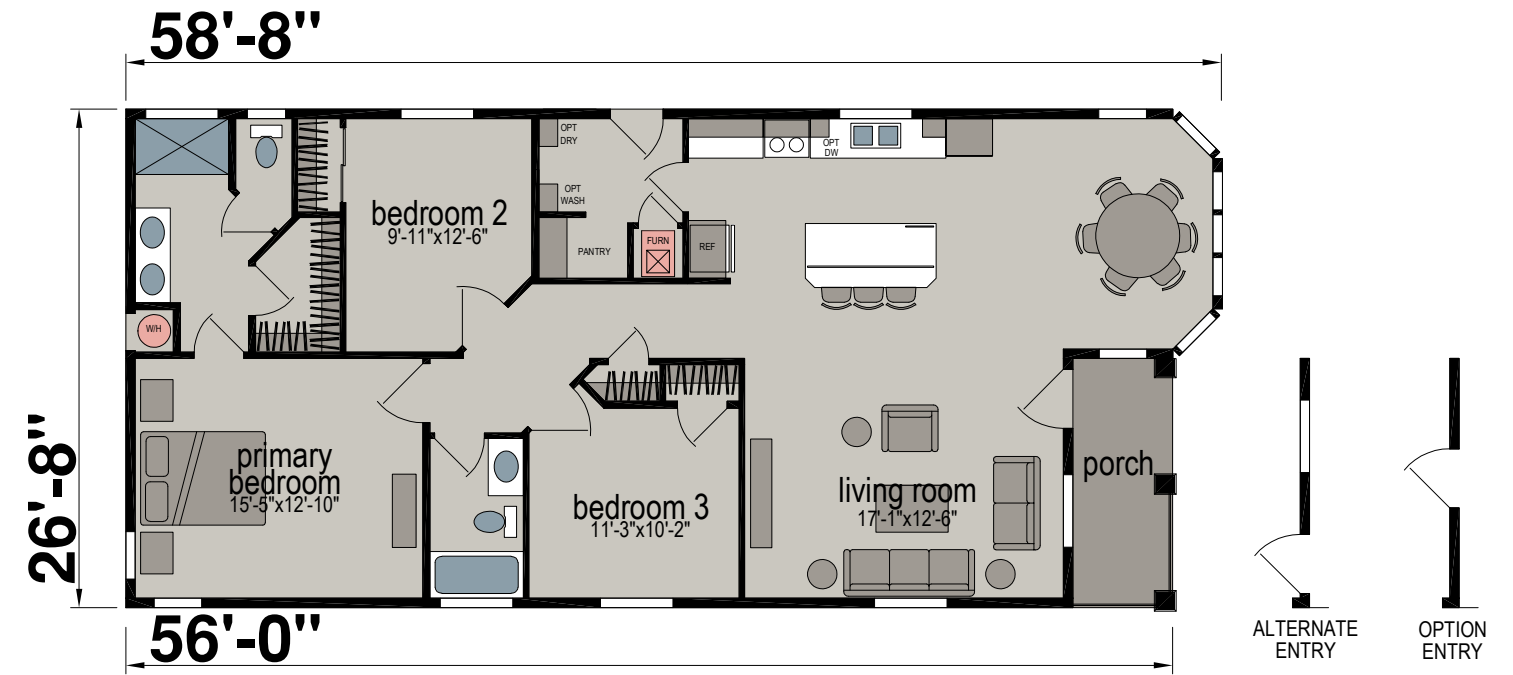
K594K

Three Bed | Two Bath | 1,398 Sq. Ft.



K517K

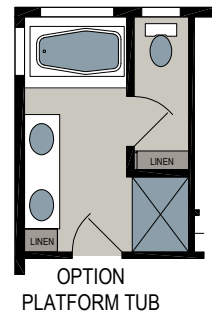
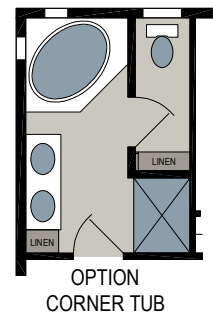
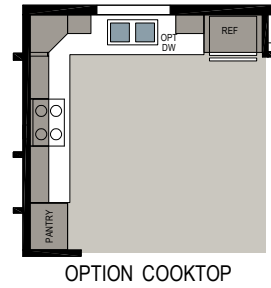
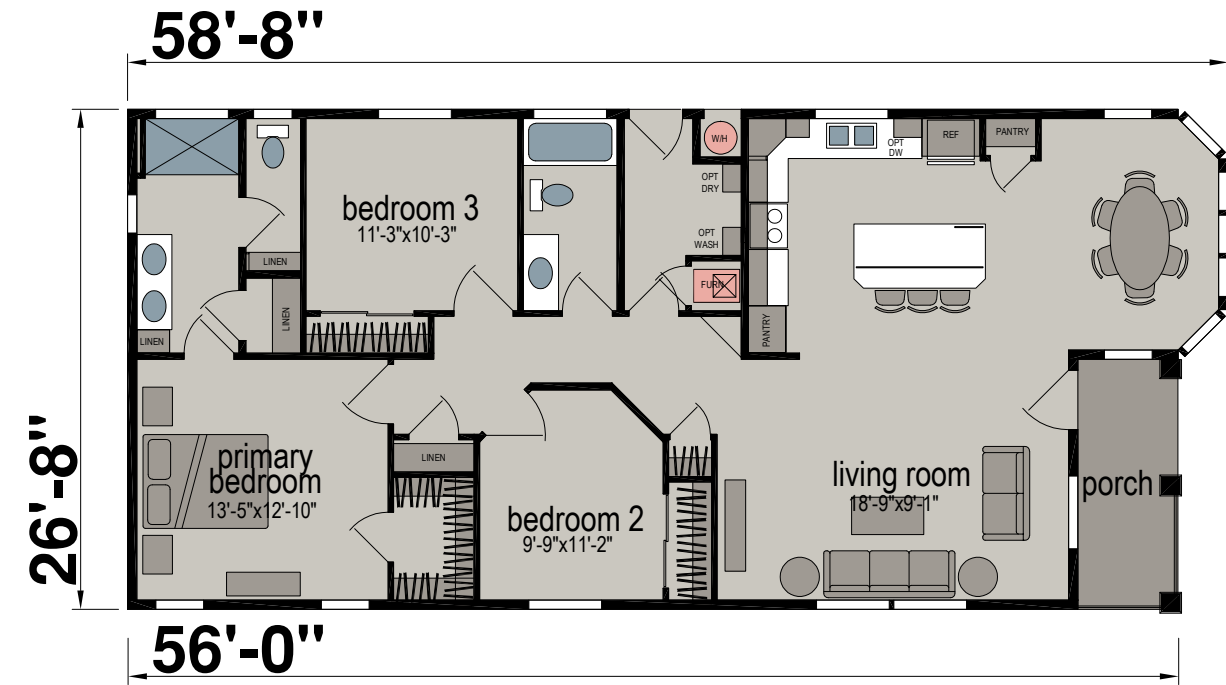
Three Bed | Two Bath | 1,541 Sq. Ft.



Shown with Optional Exterior

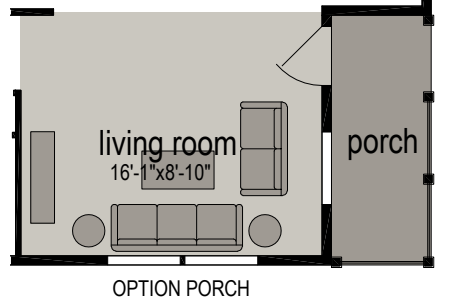
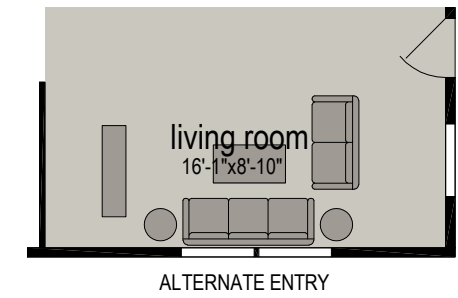
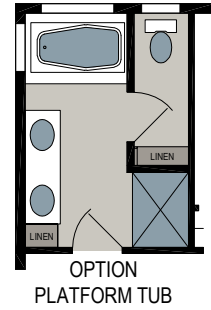
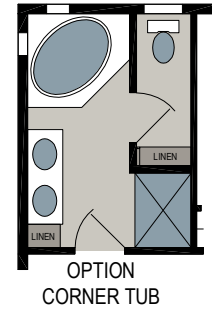
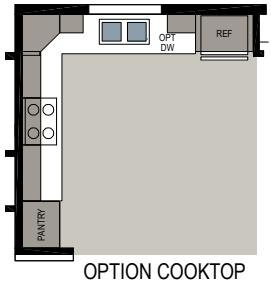
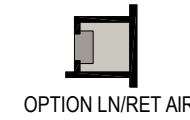
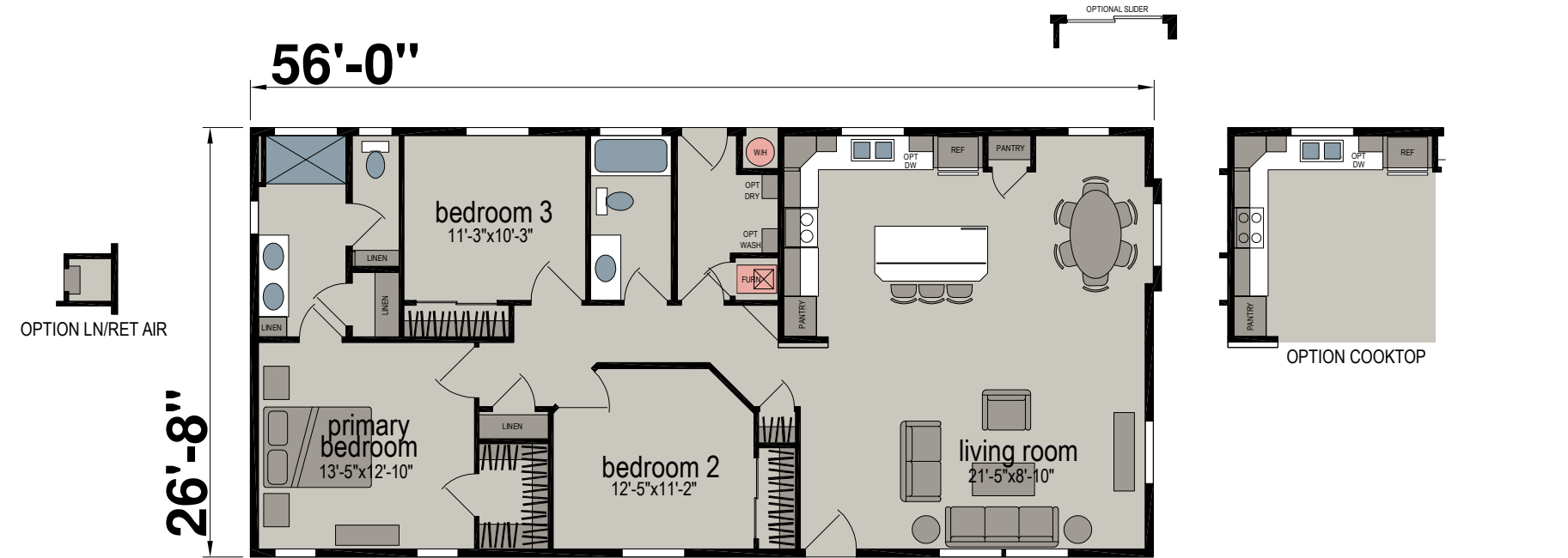
K539K

Three Bed | Two Bath | 1,451 Sq. Ft.



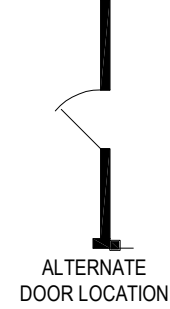
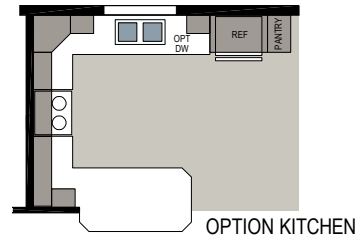
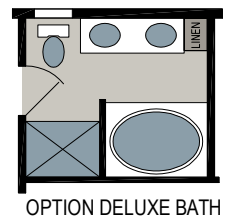
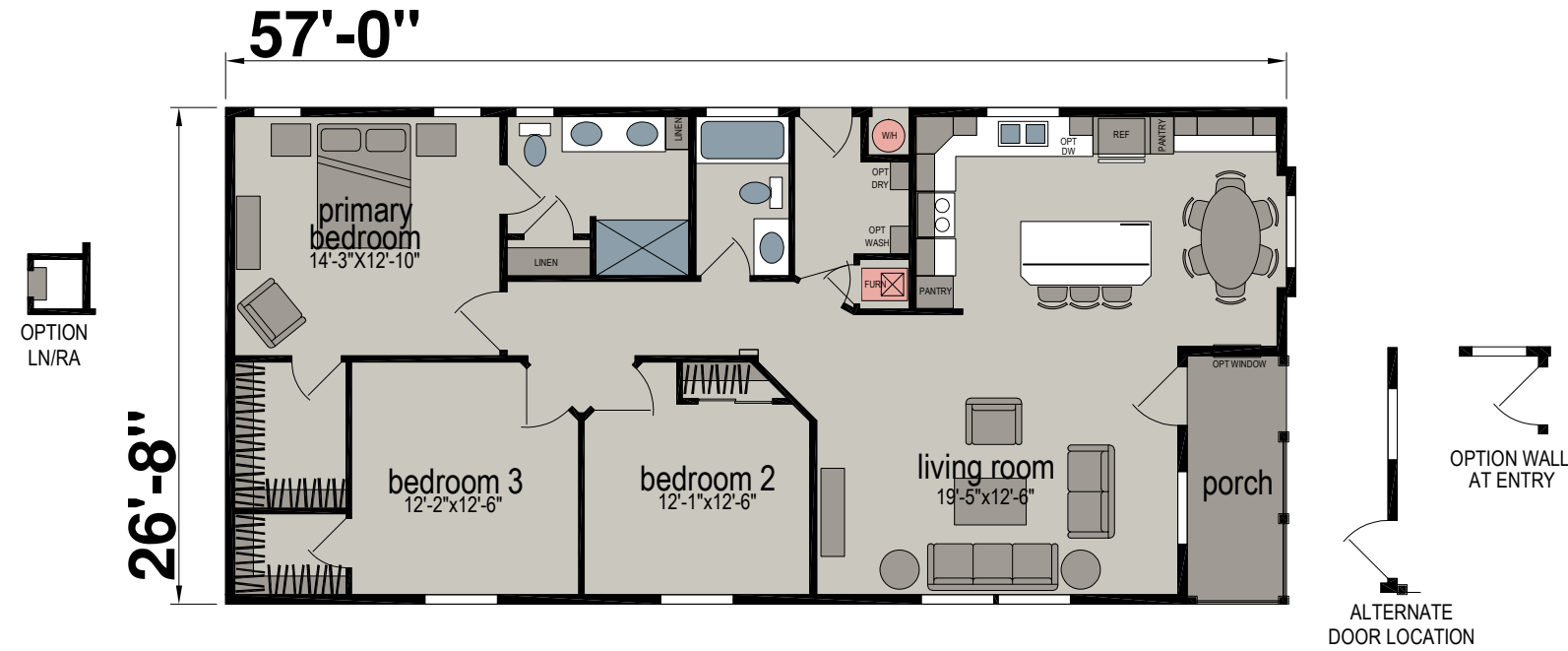
K539J

Three Bed | Two Bath | 1,496 Sq. Ft.



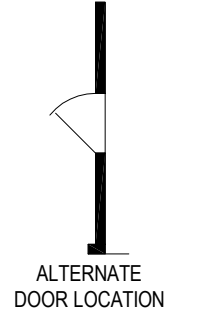
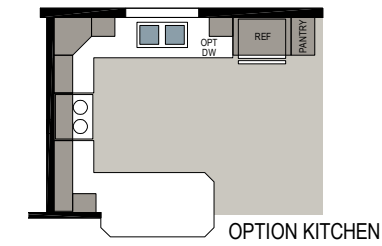
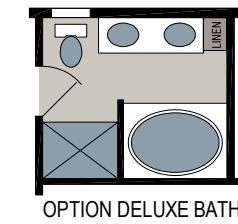
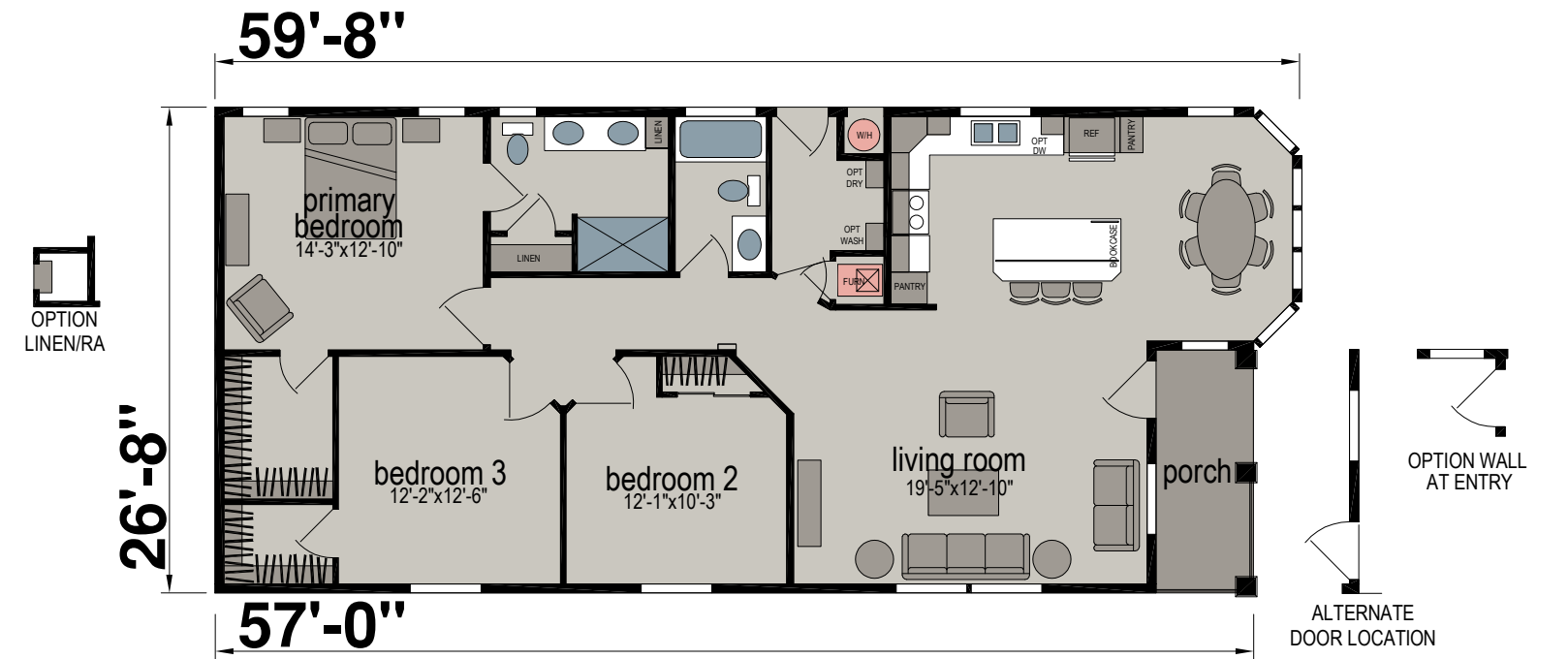
K535J

Three Bed | Two Bath | 1,452 Sq. Ft.



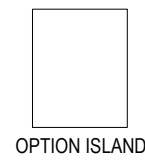
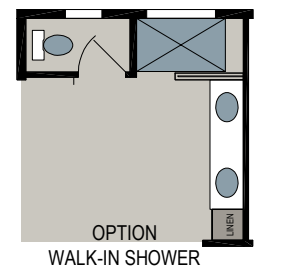
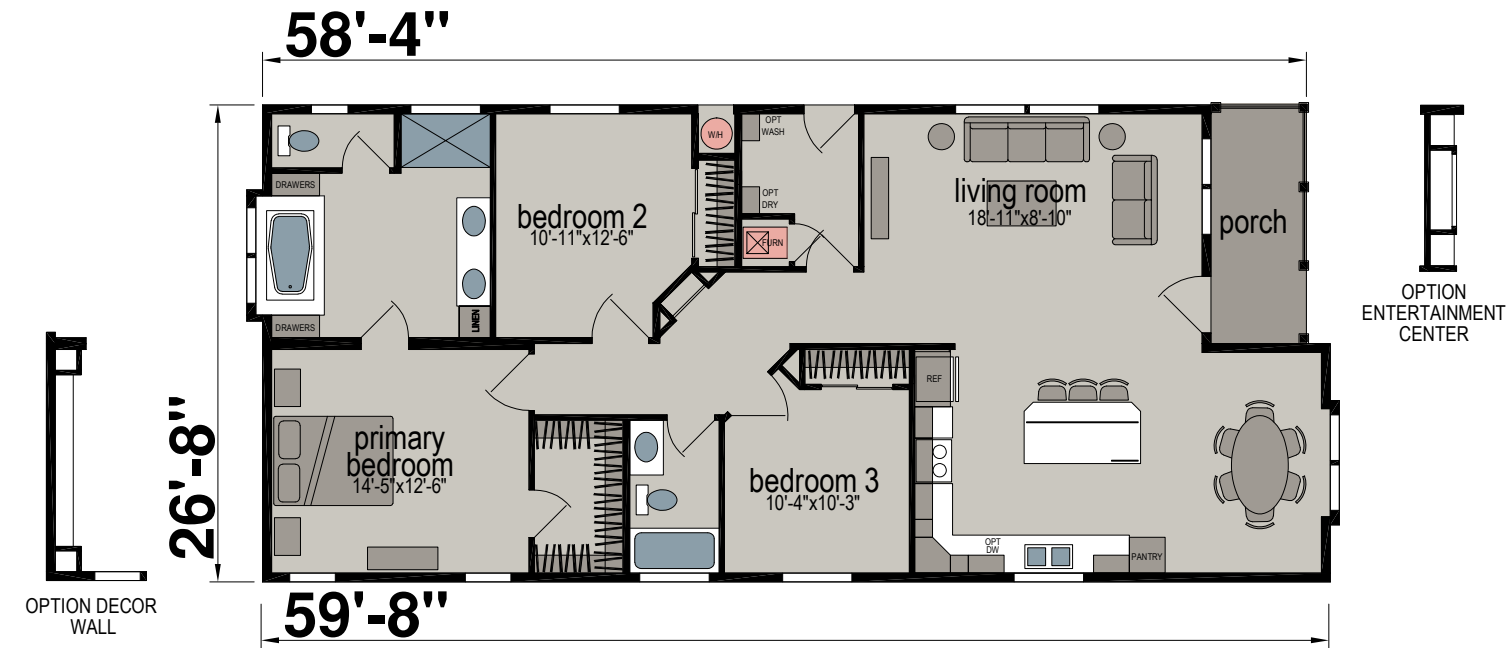
K535K

Three Bed | Two Bath | 1,478 Sq. Ft.



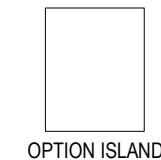
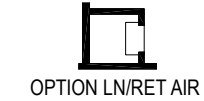
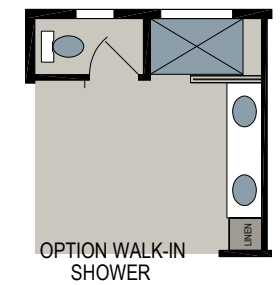
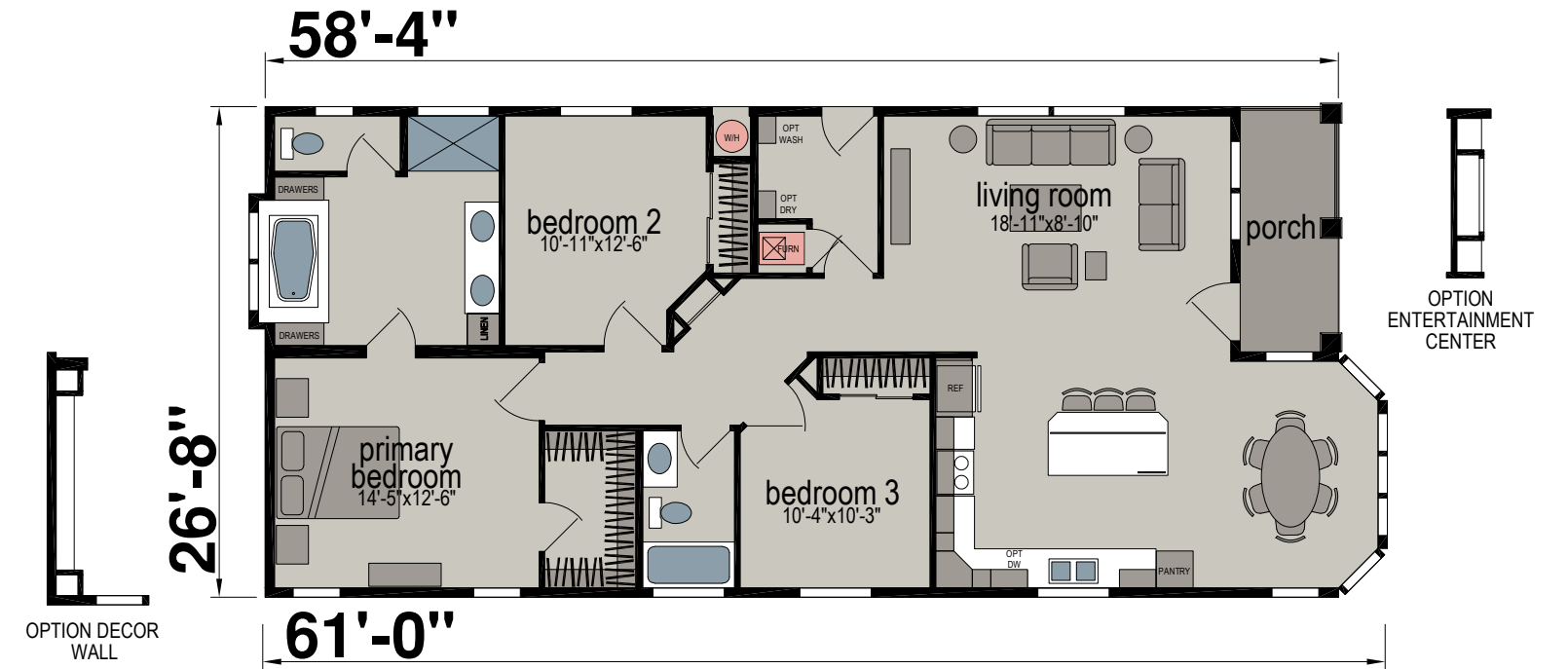
K543J

Three Bed | Two Bath | 1,512 Sq. Ft.



K543K

Three Bed | Two Bath | 1,520 Sq. Ft.



K596J

Three Bed | Two Bath | 1,532 Sq. Ft.



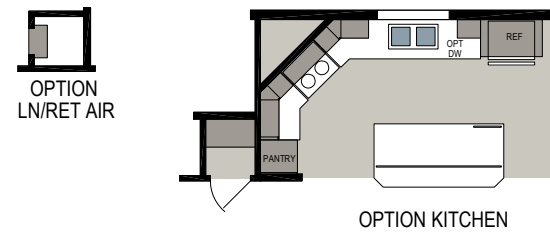
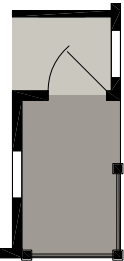
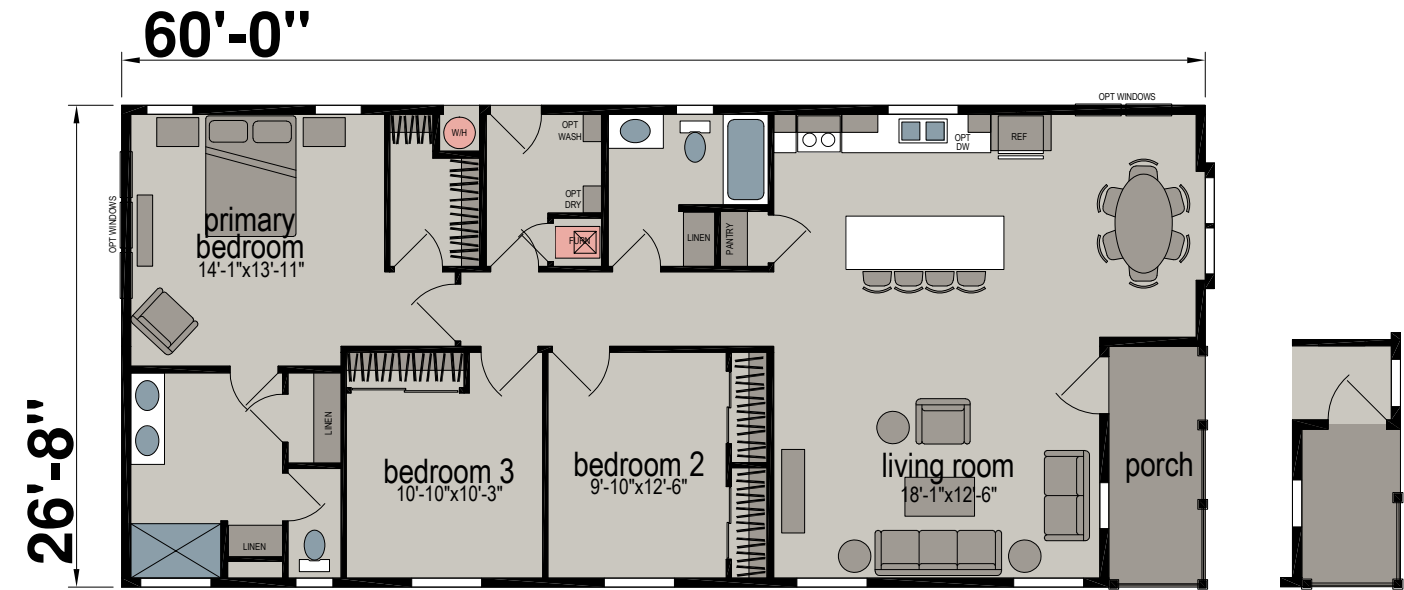
K596K

Three Bed | Two Bath | 1,558 Sq. Ft.



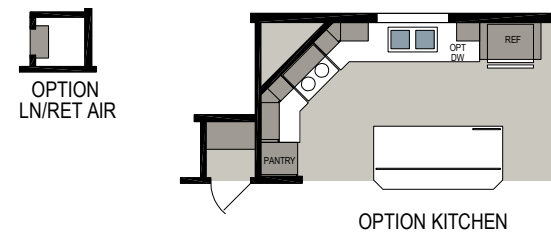
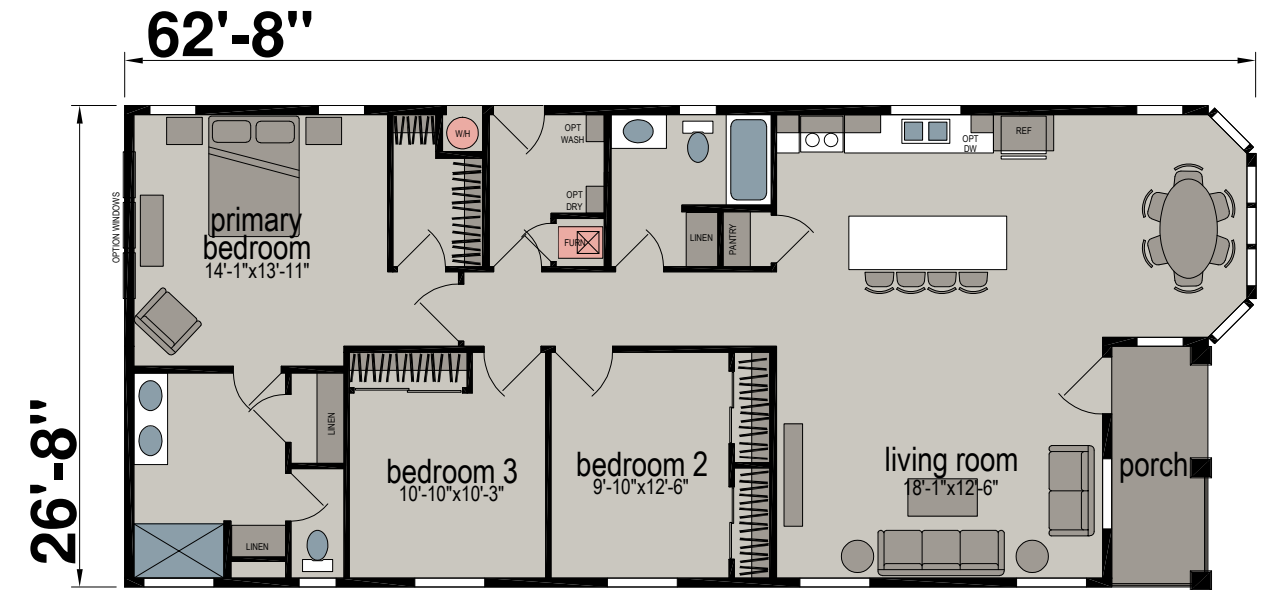
K583J

Three Bed | Two Bath | 1,532 Sq. Ft.



K583K

Three Bed | Two Bath | 1,558 Sq. Ft.



K576J

Three Bed | Two Bath | 1,672 Sq. Ft.



K943J

Three Bed | Two Bath | 1,745 Sq. Ft.



K943K

Three Bed | Two Bath | 1,765 Sq. Ft.



K900J

Three Bed | Two Bath | 1,707 Sq. Ft.



Standard Features SUNSET RIDGE

Exterior

- R-33-19-22 Insulation
- 2x6 Exterior Walls
- 20# Roof Load
- 3:12 Roof Pitch (Per Plan)
- Dual-Glazed Vinyl Framed Low-E Windows
- Vertical Cement Fiber Siding
- Architectural Roof Shingles
- 5/8" Tongue & Groove OSB Floor Decking
- 4" Upgrade Window Trim
- 36" Craftsman Front Door with Deadbolt
- 32" 9-Lite Rear Door
- 12" Front & Rear Overhangs
- 6" Side Eaves (Per Plan)

Interior

- 9' Flat Ceiling
- Drywall Throughout
- Hand-Finished Knock-Down Texture
- Crown Molding in Living Room, Dining Room, Kitchen & Hallway
- White Low Sheen Interior Paint
- Hardwood Cabinets with Hidden Hinges, White Lining & Adjustable Overhead Shelves
- 2-Panel Interior Doors with Mortised Nickel Hinges
- Single-Lever Door Handles
- 36" Wide Bedroom Passage Doors (Per Plan)
- Oversized 42" Wide Hallway
- Double Wardrobe Shelves in Primary Bedroom
- Walk-In Closet Primary Bedroom (Per Plan)
- 5-1/4" Residential Baseboard Molding
- 3-1/4" Door Casing

- Cased Windows
- Upgrade Dining Room Chandelier
- Shaw® Stain Safety™ Treated Carpet & Rebond Pad
- Shaw® No-Wax Vinyl Floor Covering in Kitchen, Dining Room, Baths & Utility
- 2" Faux Wood Blinds with Faux Wood Valance
- Full Extension Ball Bearing Drawer Guides
- Wood Shelves & Poles in all Closets
- By-Pass Wardrobe Doors in Guest Bedrooms
- Smart Thermostat
- Large Windows

Electrical

- ENERGY STAR®
- High Efficiency Gas Furnace
- Toe-Kick Registers in Kitchen & Baths
- 100 AMP Exterior Electrical Panel Box
- 40-Gallon Gas Water Heater
- Smoke Detectors with Battery Back-Up
- Door Over Furnace Compartment
- Washer & Dryer Overhead Cabinet
- Plumbed for Washer & Gas Dryer
- Recessed Dryer Vent Box
- Metal Shut-Off Valves Throughout
- Exterior Light at Front & Rear Doors
- Rocker-Type Light Switches
- Three-Way Light Switch in Hall & Utility (Per Plan)
- G.F.I. Protected Outlets in Kitchen & Baths

Kitchen

- 42" Tall Hardwood Overhead Cabinets
- 4" LED Recessed Can Lights
- Laminate Countertop with Square Edge
- 6" Tile Backsplash

- Whirlpool® Stainless Steel Appliances
 - 25 Cu.Ft. Side-by-Side Refrigerator
 - 30" Deluxe Self-Cleaning Gas Range
 - Range Hood Microwave
 - Dishwasher
- Adjustable Overhead & Base Cabinet Shelves
- Stainless Steel Sink
- Single-Lever Faucet w/ Pull-Out Sprayer
- Drawer-Over-Door Cabinet Construction
- Deep Cabinet Over Refrigerator
- Large Gourmet Kitchen Island

Baths

- 60" Fiberglass Walk-In Shower with Single-Lever Diverter Primary Bath
- Clear Shower Enclosure in Primary Bath
- 60" Fiberglass Tub/Shower with Single-Lever Diverter in Guest Bath
- 36" High Countertop in Both Baths
- Linen Cabinet & Drawer Bank in Primary Bath
- Dual Sinks in Primary Bath (Per Plan)
- Towel Ring & Bar in Primary Bath
- Towel Bar in Guest Bath
- Dual Control Faucet
- Dual China Sink with Overflow & Pop-Up Drain
- Elongated Water-Saver Commode
- Vanity Strip Light & Exhaust Fan with Light
- Beveled Medicine Cabinet in Both Baths
- Vanity Mirrors with Beveled Edge
- Laminate Square Edge
- 6" Tile Backsplash
- Ventilated Window (Per Plan)

Due to continuous product development and improvement, prices, specifications, and materials are subject to change without notice or obligation. Square footage and other dimensions are approximate. Exterior images may be artist renderings and are not intended to be an accurate representation of the home. Renderings, photos and floor plans may be shown with optional features or third-party additions.

SKYLINE®



Contact Us Today!

Member:



499 W Esplanade Ave | San Jacinto, CA 92583 | (951) 654-9321