

Victory

SERIES



SKYLINE®

Victory Series

Built For Our Homeowners with Pride.

Skyline® Homes Victory Series is designed with your market needs in mind. Competitively priced, the Victory series does not hold back on the materials, construction, quality or craftsmanship expected in a Skyline home.

The Right Home at The Right Price.



M103J | Artist Rendering



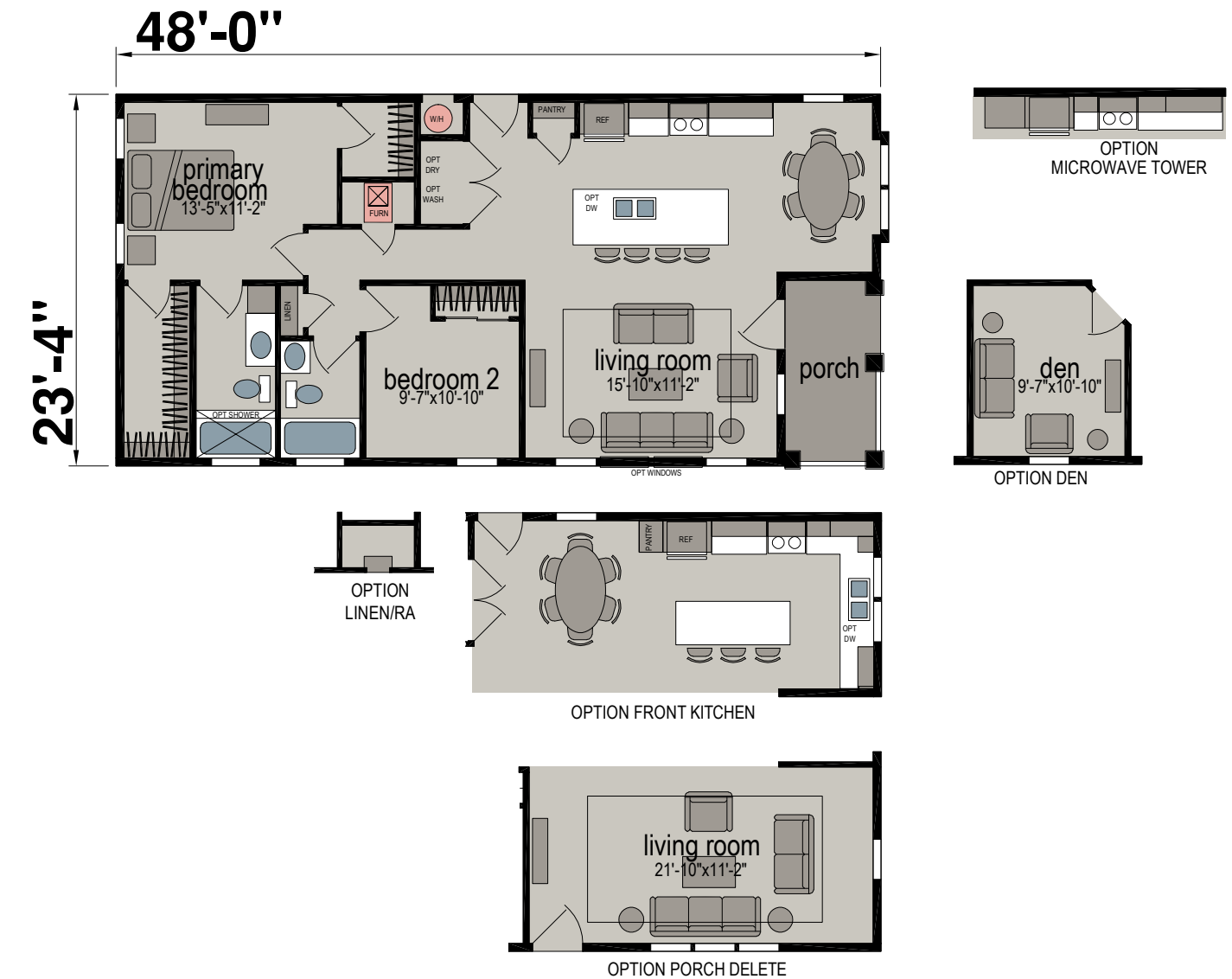
M200J | Artist Rendering



M201K | Artist Rendering

M103J

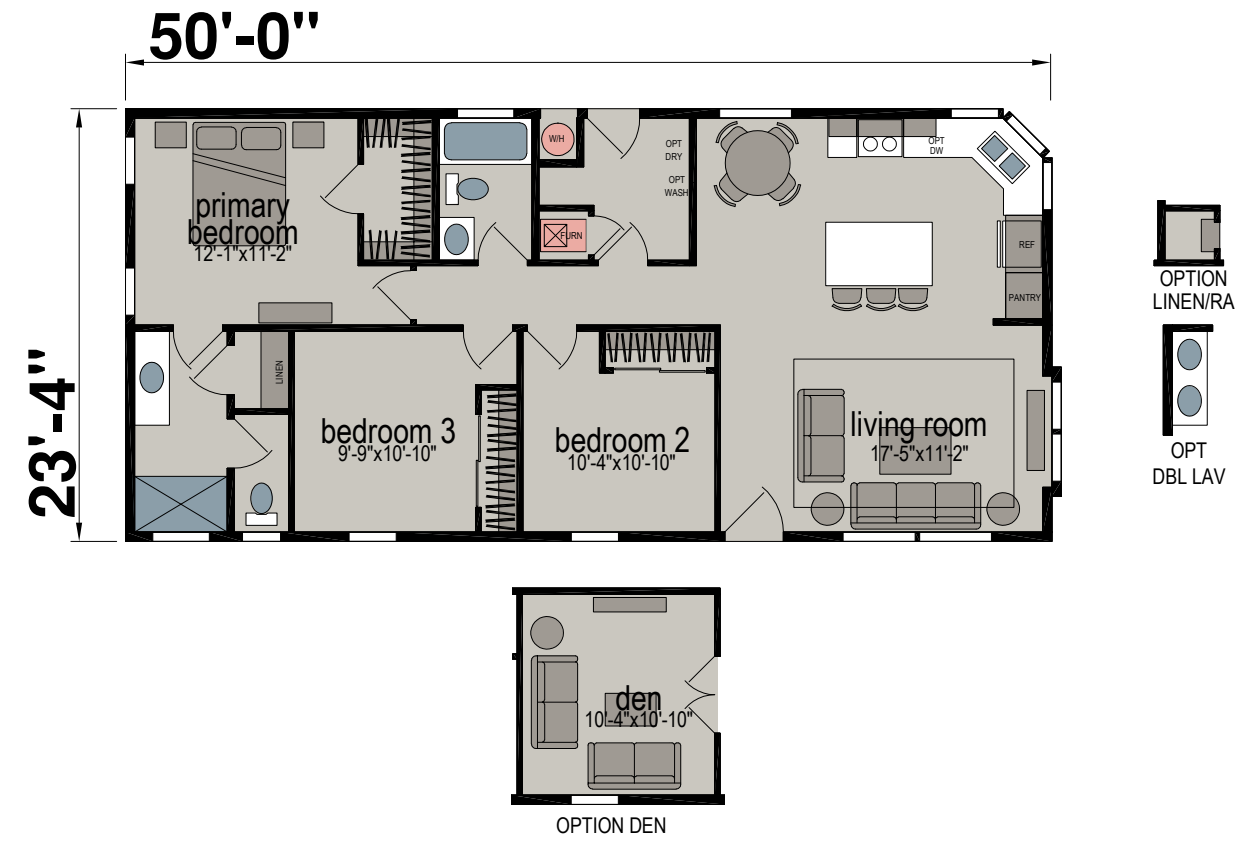
Two Bed | Two Bath | 1,053 Sq. Ft.



Skyline received the highest numerical score in the proprietary Lifestory Research 2021-2025 America's Most Trusted® Manufactured Home Builder Brand study. Study results are based on experiences and perceptions of people surveyed. Your experiences may vary. Visit www.lifestoryresearch.com.

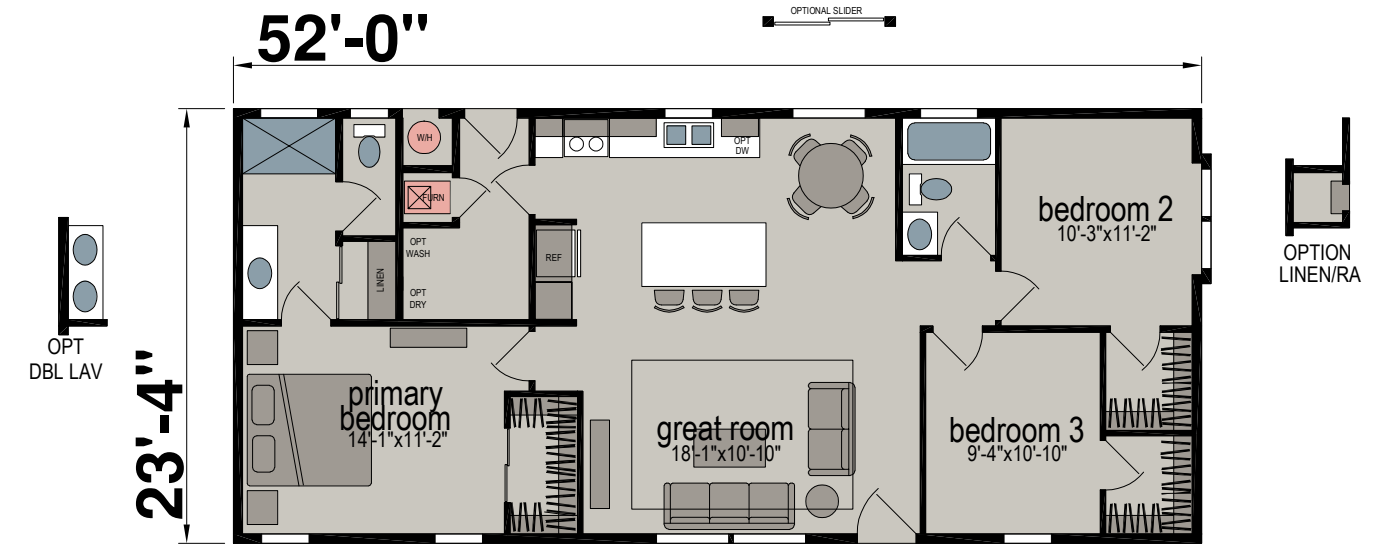
M105J

Three Bed | Two Bath | 1,167 Sq. Ft.



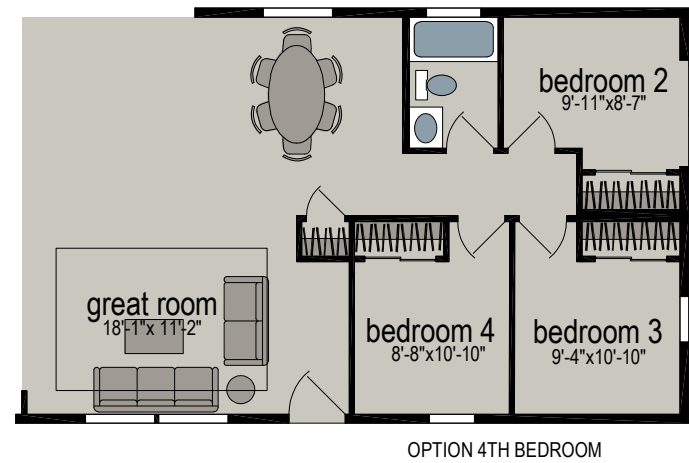
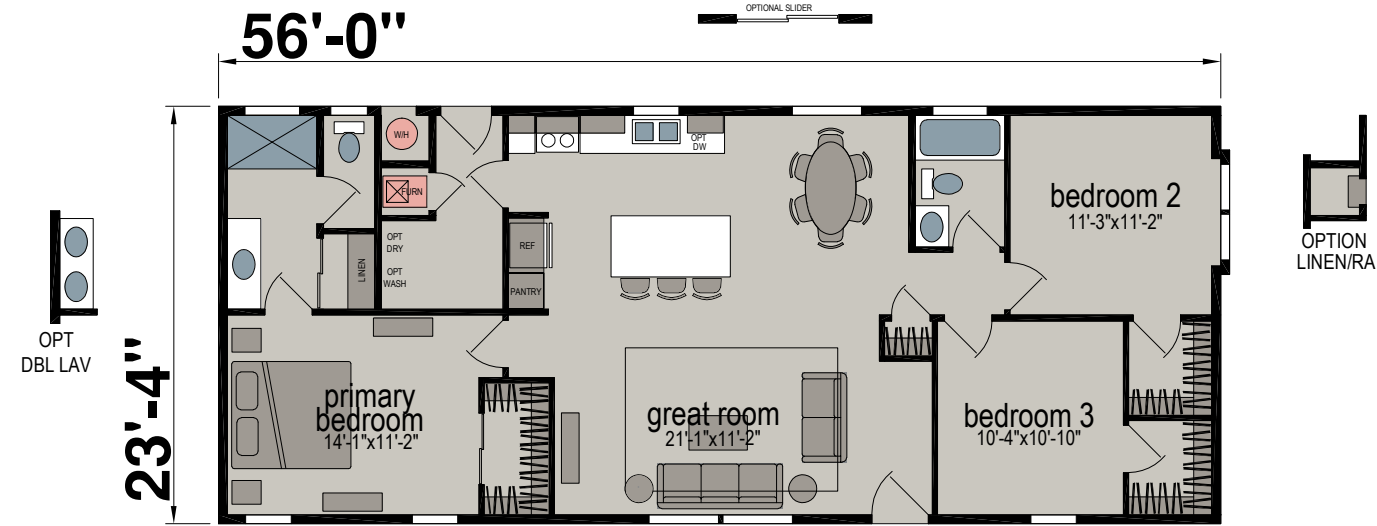
M100J

Three Bed | Two Bath | 1,216 Sq. Ft.



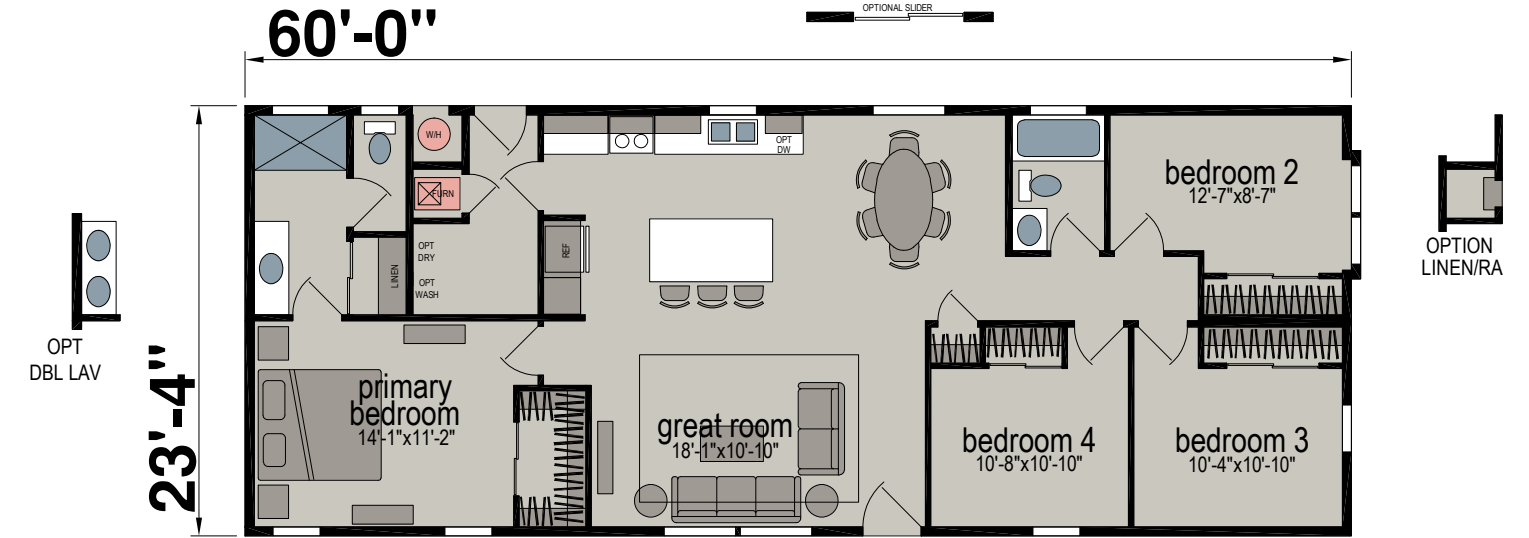
M100K

Three Bed | Two Bath | 1,310 Sq. Ft.



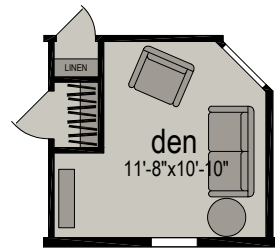
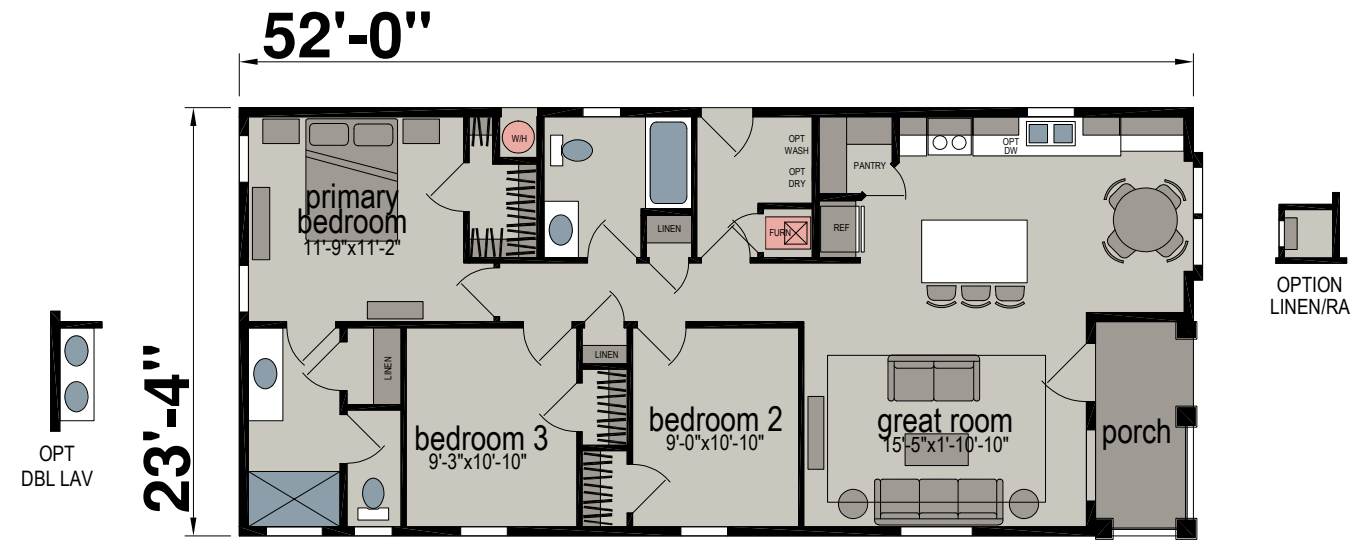
M100L

Four Bed | Two Bath | 1,403 Sq. Ft.



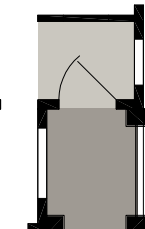
M101J

Three Bed | Two Bath | 1,154 Sq. Ft.



OPTION DEN

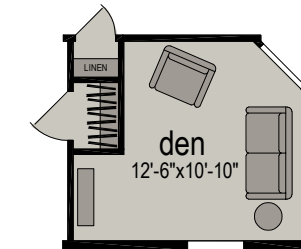
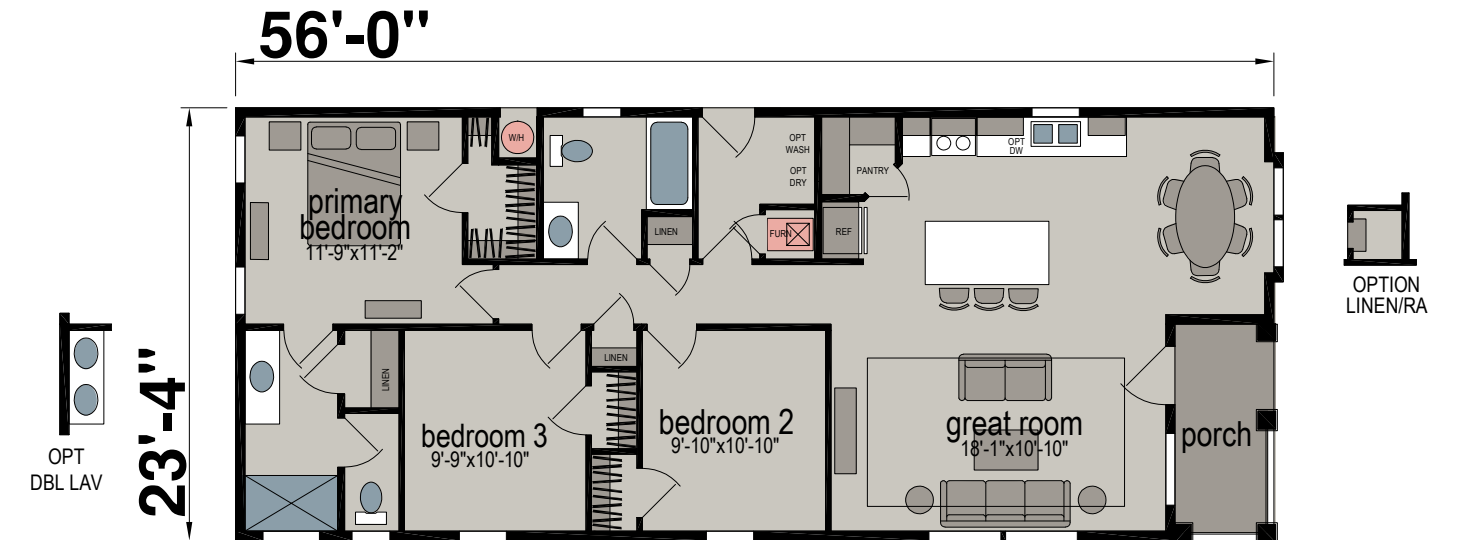
9 RECESSED WALL



OPTION 2X6 RECESSED ENTRY

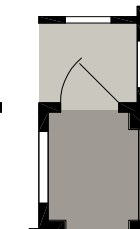
M101K

Three Bed | Two Bath | 1,247 Sq. Ft.



OPTION DEN

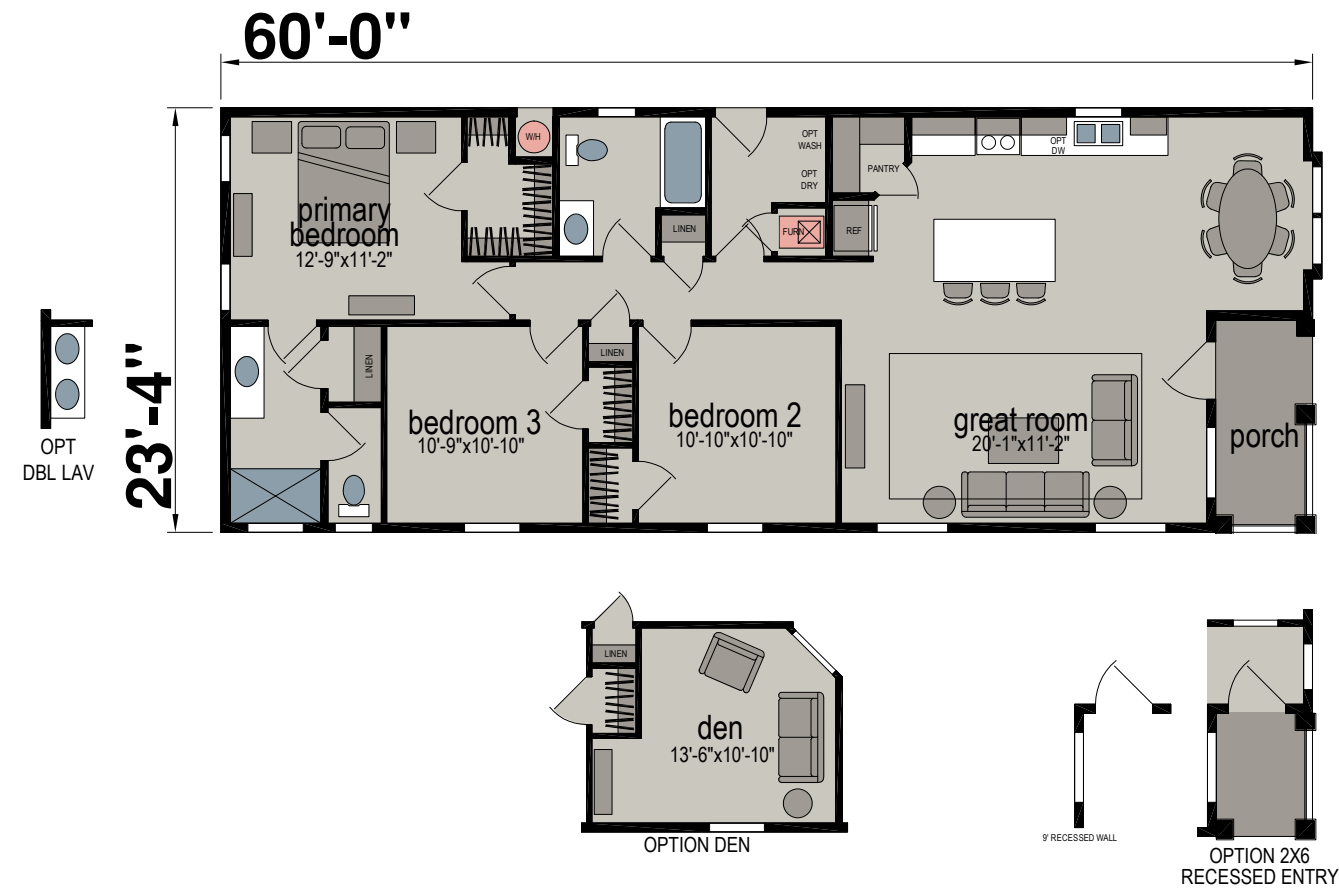
9 RECESSED WALL



OPTION 2X6 RECESSED ENTRY

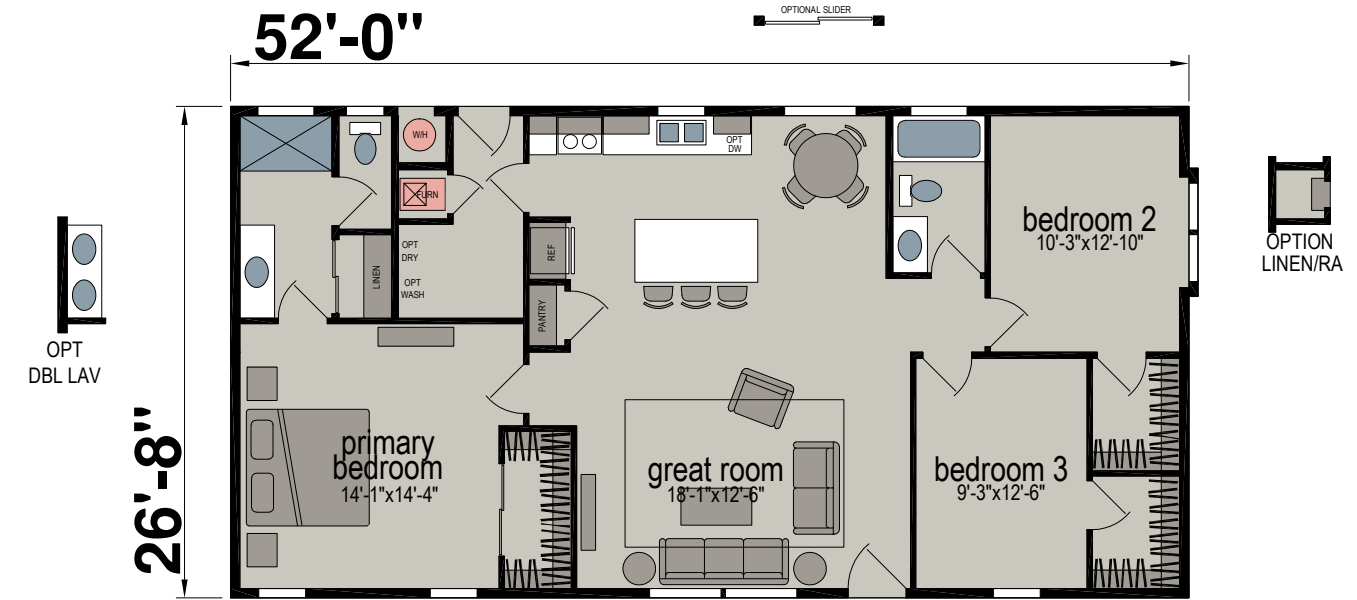
M101L

Three Bed | Two Bath | 1,341 Sq. Ft.



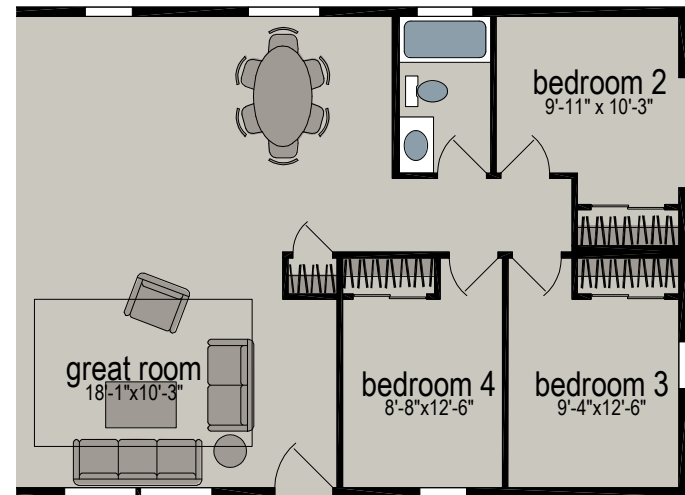
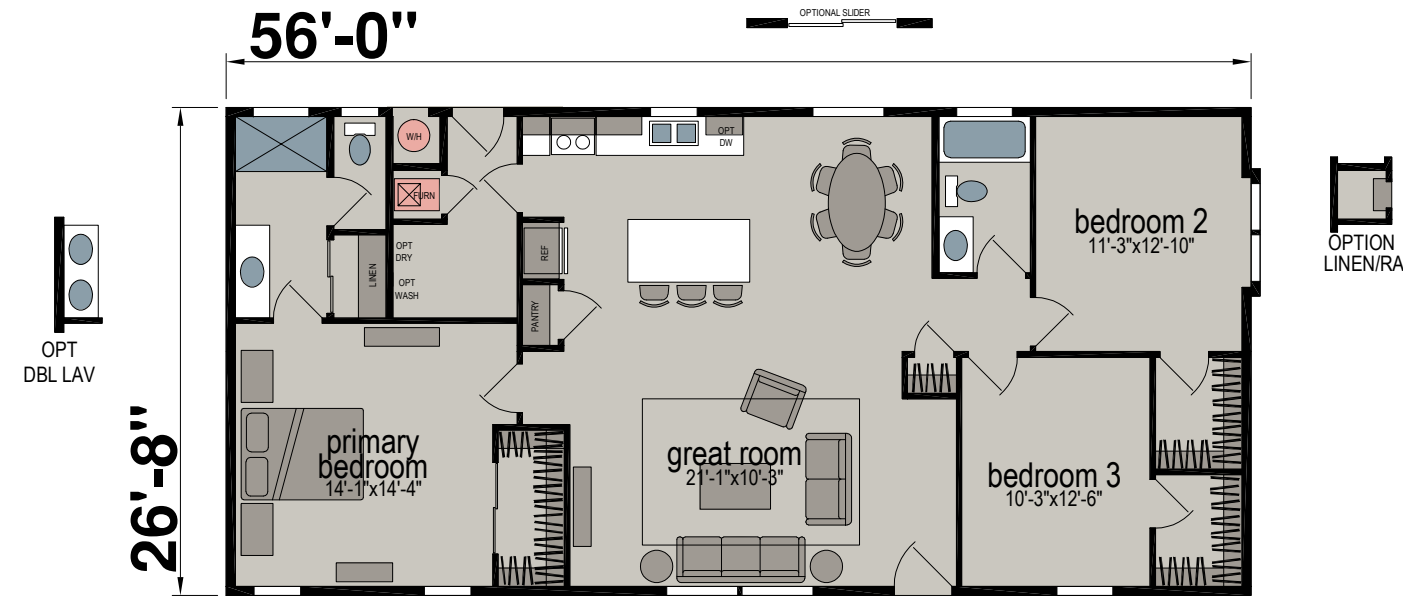
M200J

Three Bed | Two Bath | 1,390 Sq. Ft.



M200K

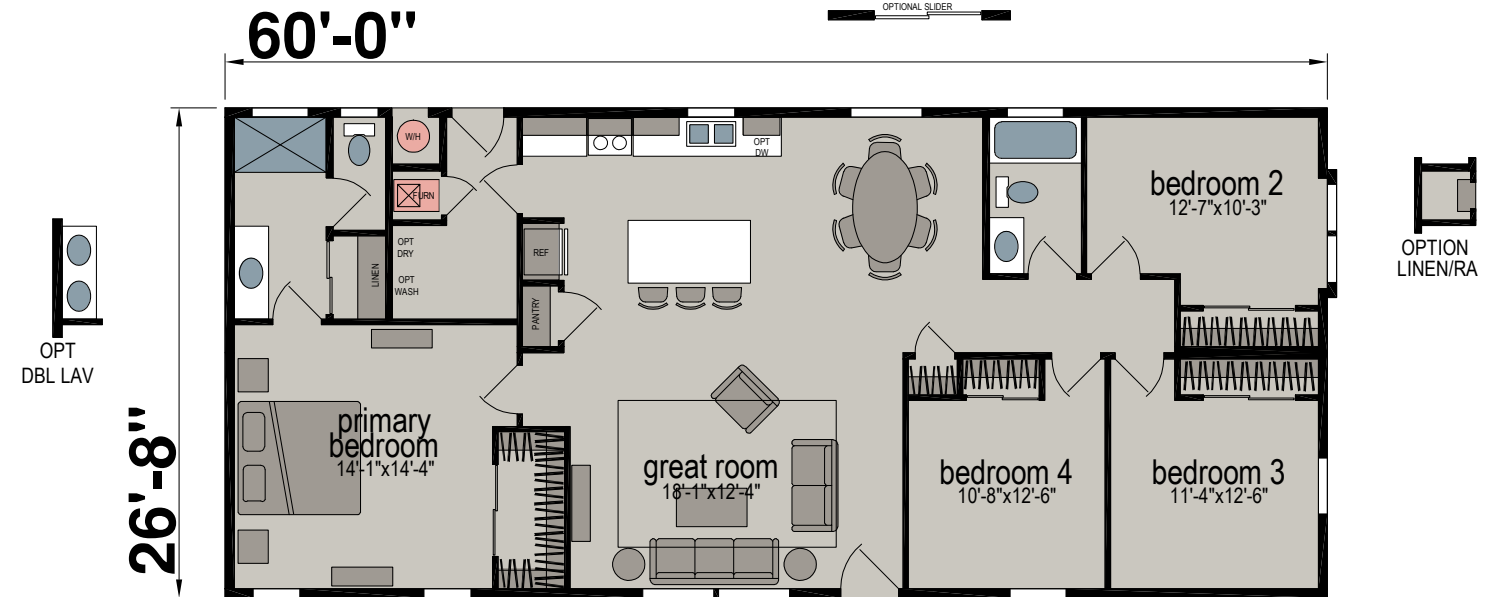
Three Bed | Two Bath | 1,496 Sq. Ft.



OPTION 4TH BEDROOM

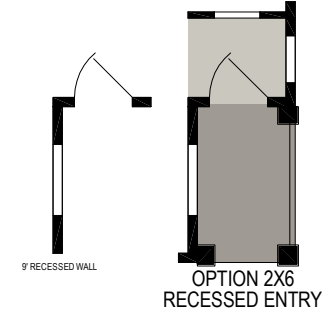
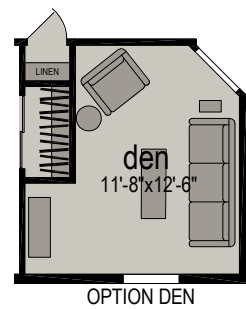
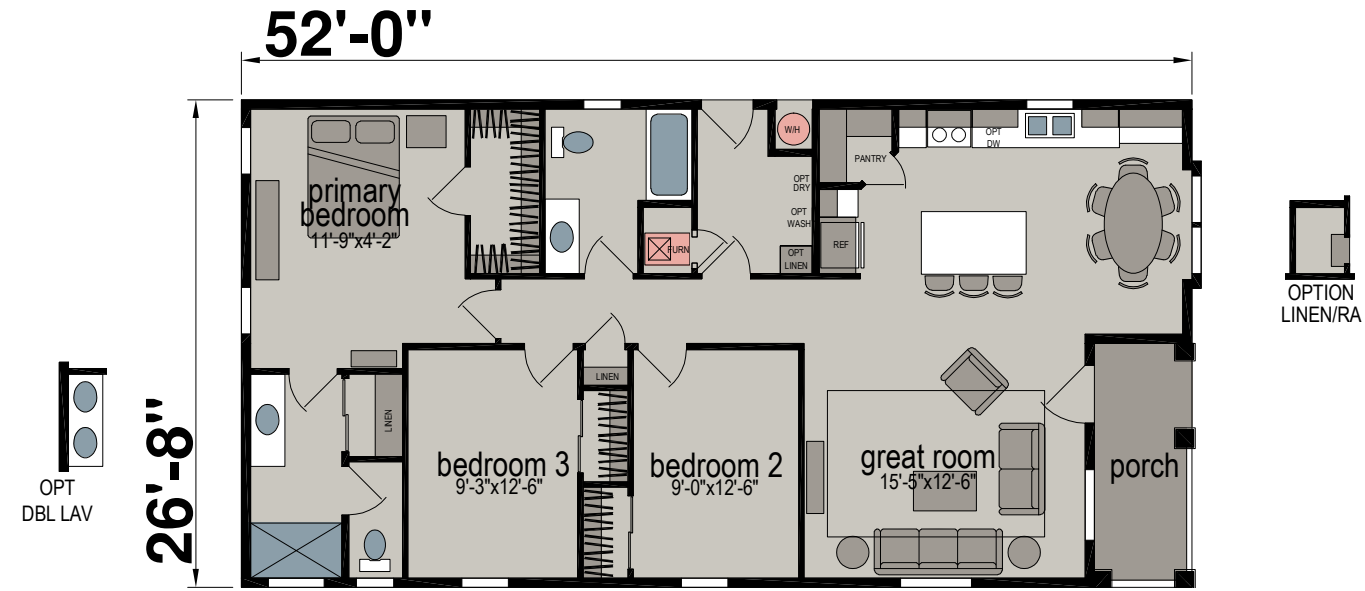
M200L

Four Bed | Two Bath | 1,603 Sq. Ft.



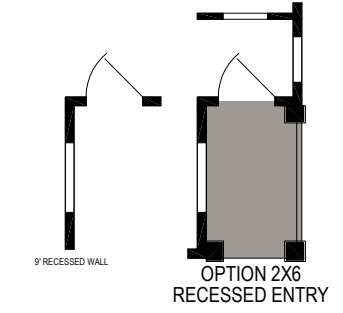
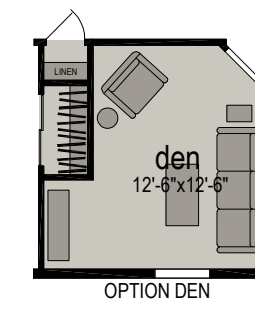
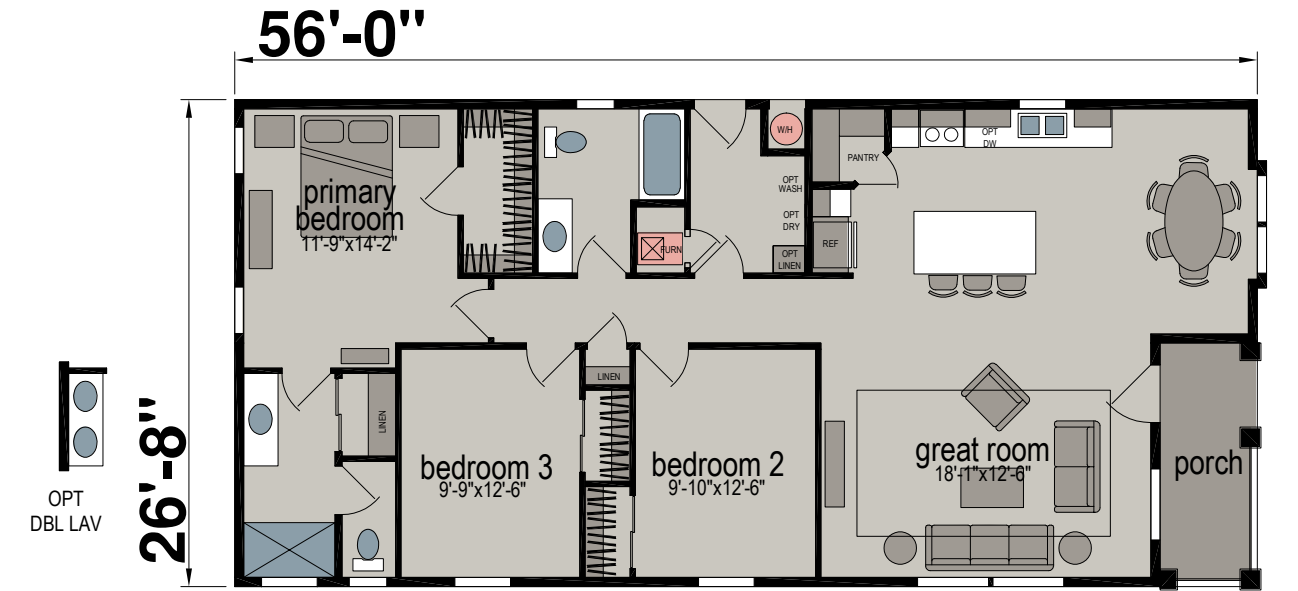
M201J

Three Bed | Two Bath | 1,319 Sq. Ft.



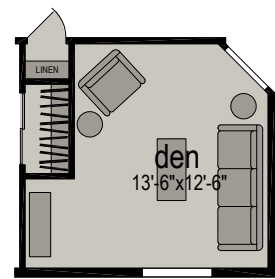
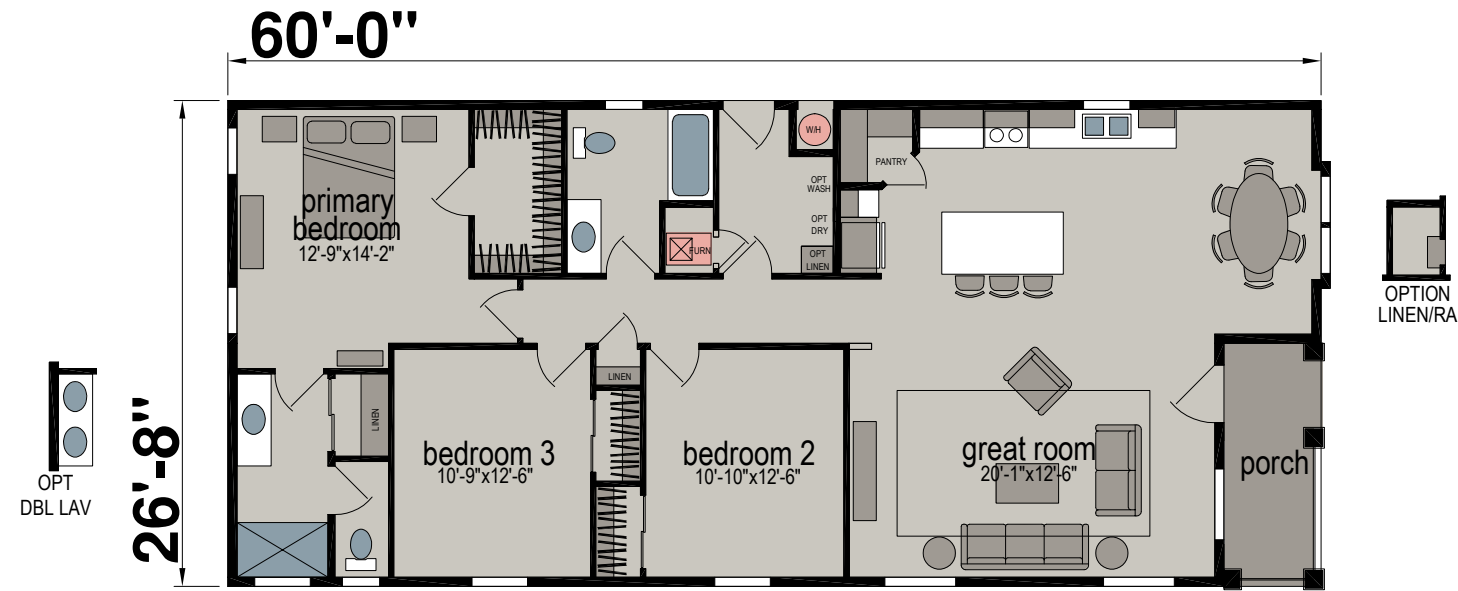
M201K

Three Bed | Two Bath | 1,425 Sq. Ft.

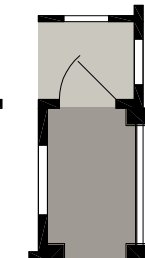


M201L

Three Bed | Two Bath | 1,532 Sq. Ft.



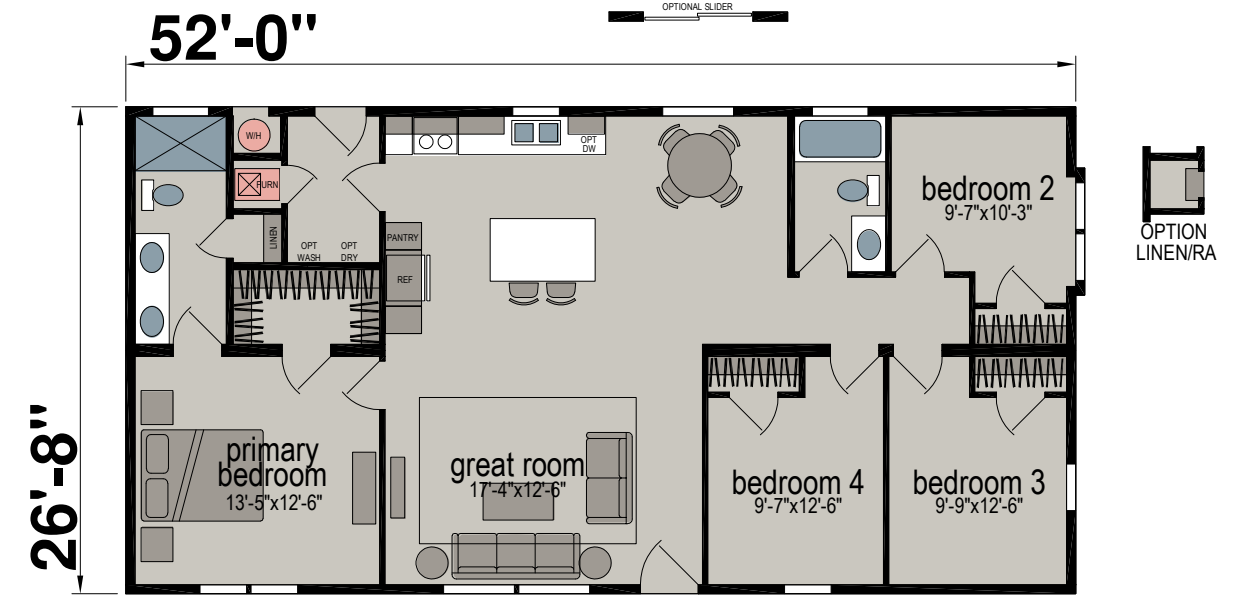
OPTION DEN



OPTION 2X6 RECESSED ENTRY

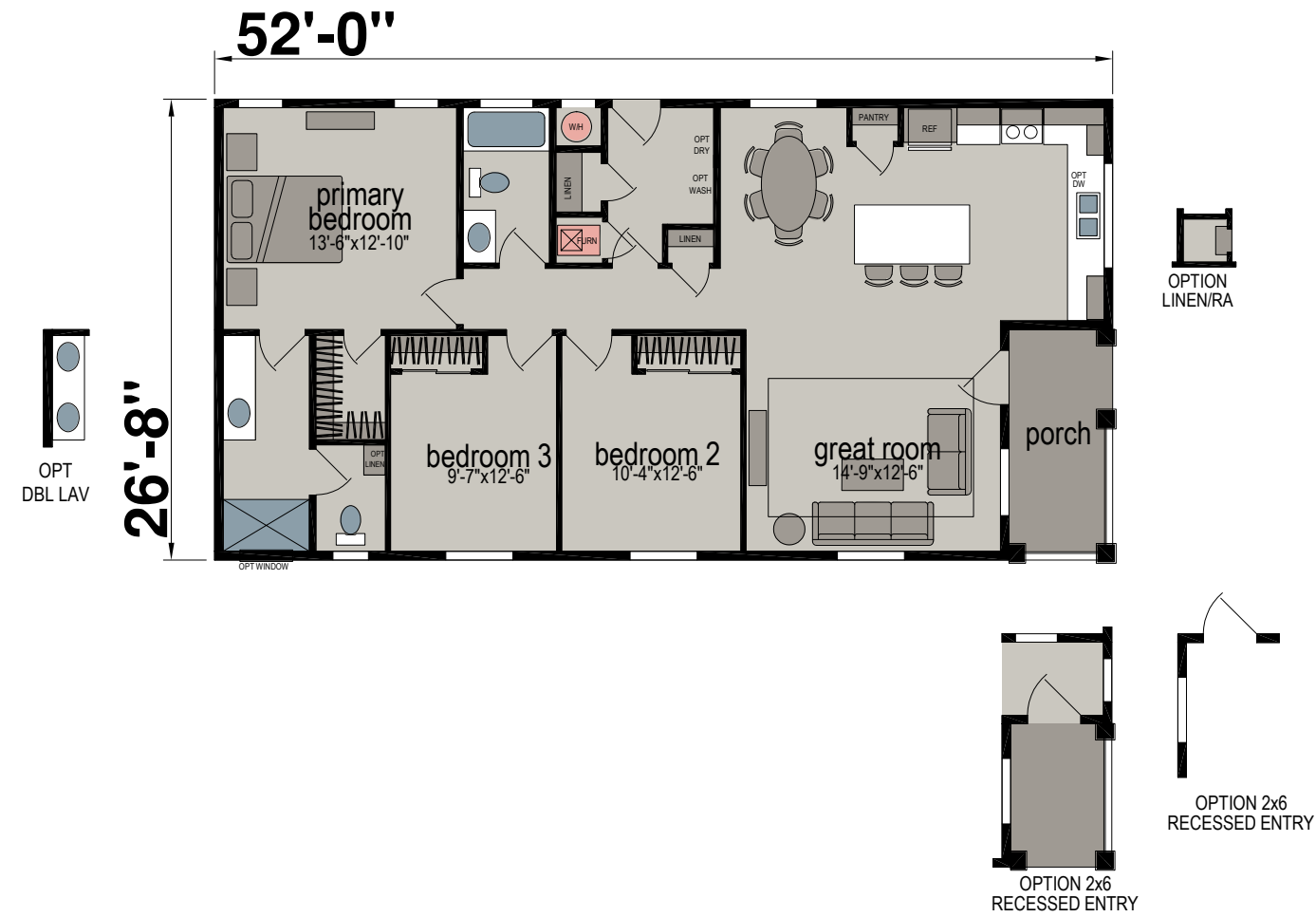
M202J

Four Bed | Two Bath | 1,390 Sq. Ft.



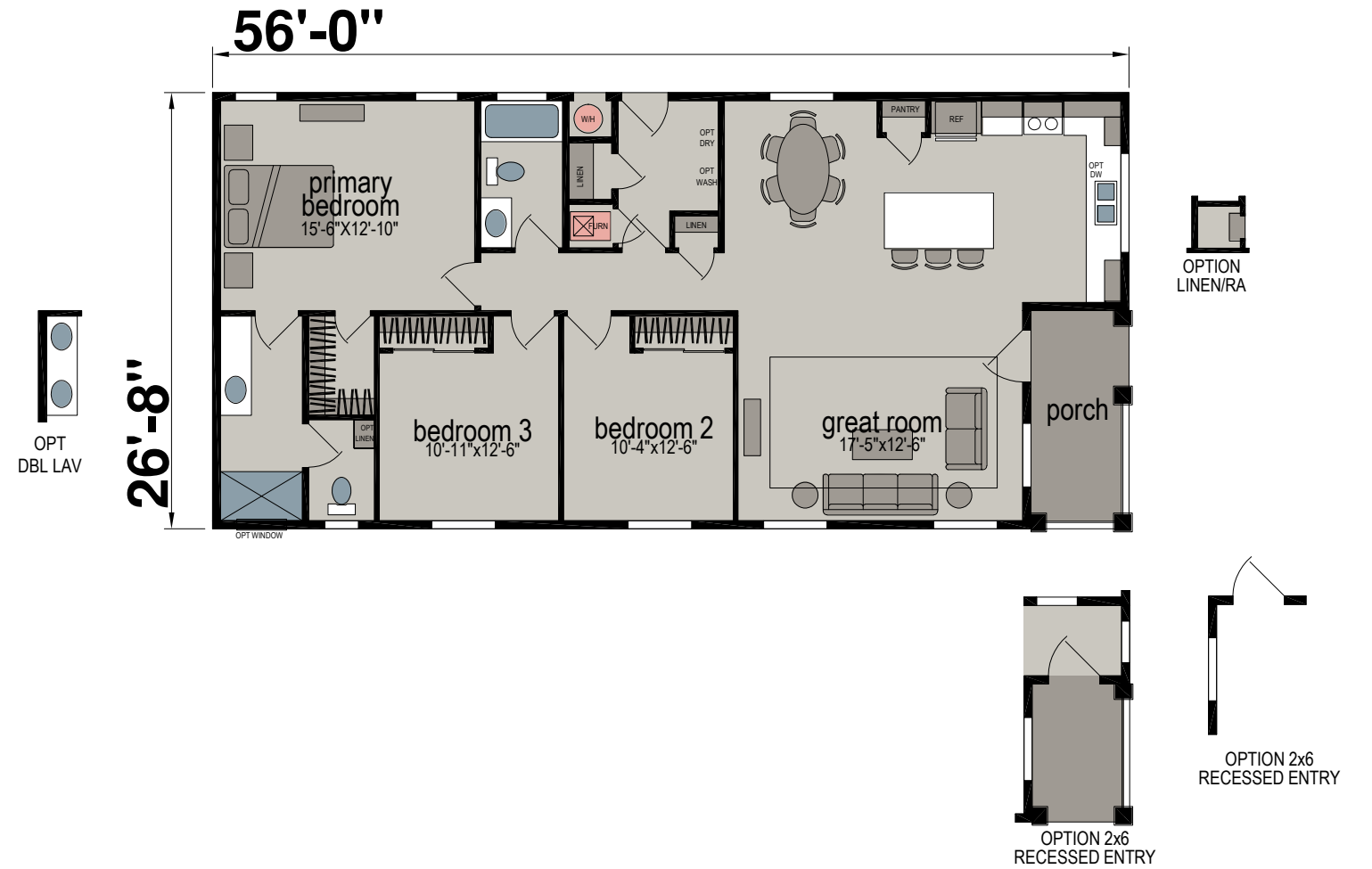
M203J

Three Bed | Two Bath | 1,306 Sq. Ft.



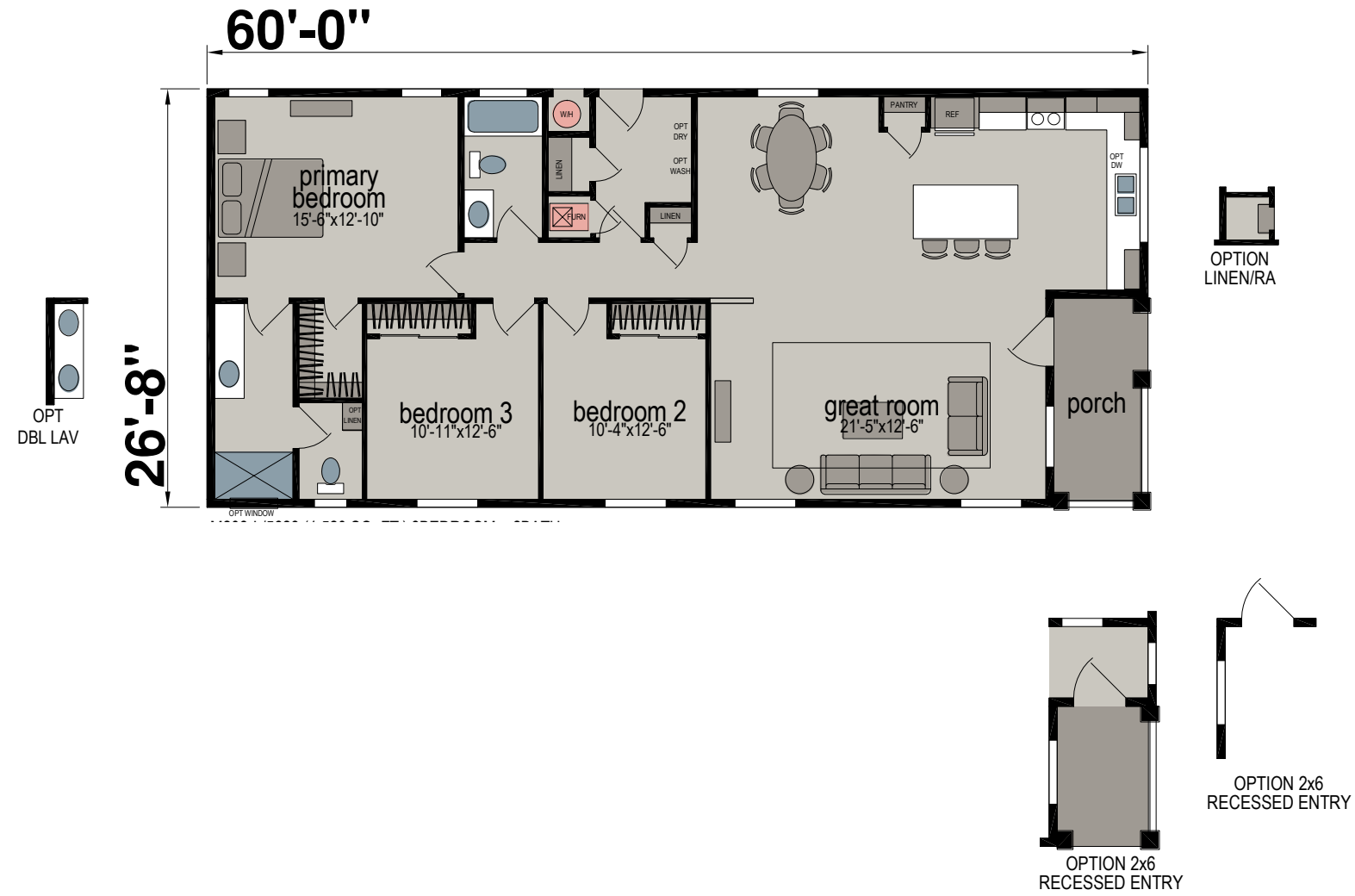
M203K

Three Bed | Two Bath | 1,413 Sq. Ft.



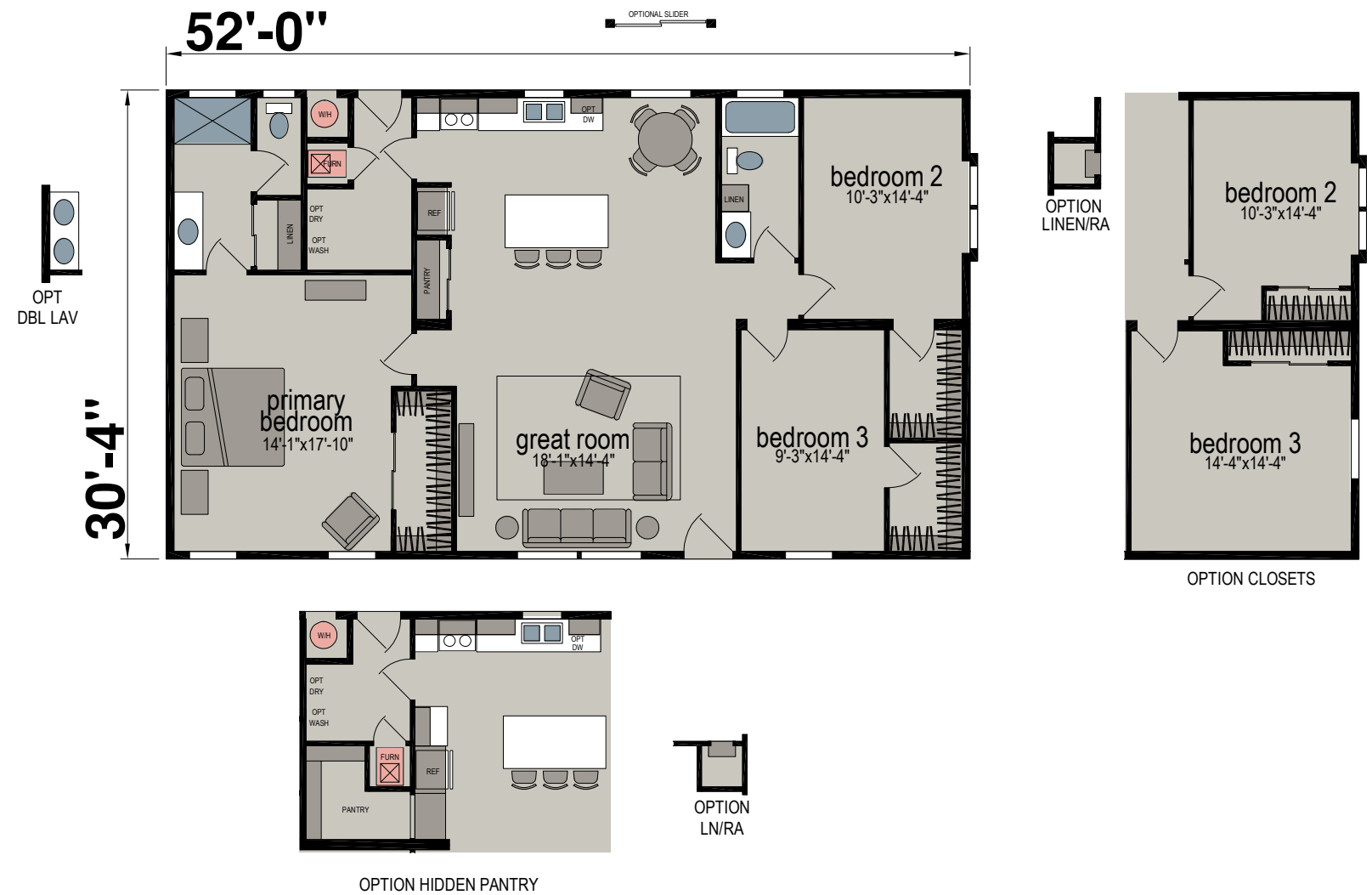
M203L

Three Bed | Two Bath | 1,520 Sq. Ft.



M500A

Three Bed | Two Bath | 1,580 Sq. Ft.



M500B

Three Bed | Two Bath | 1,702 Sq. Ft.



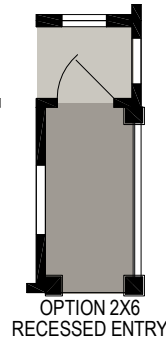
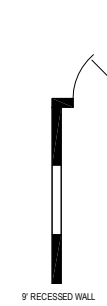
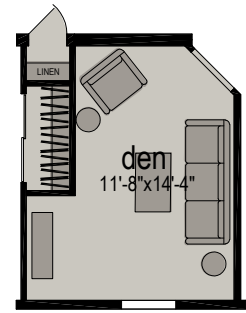
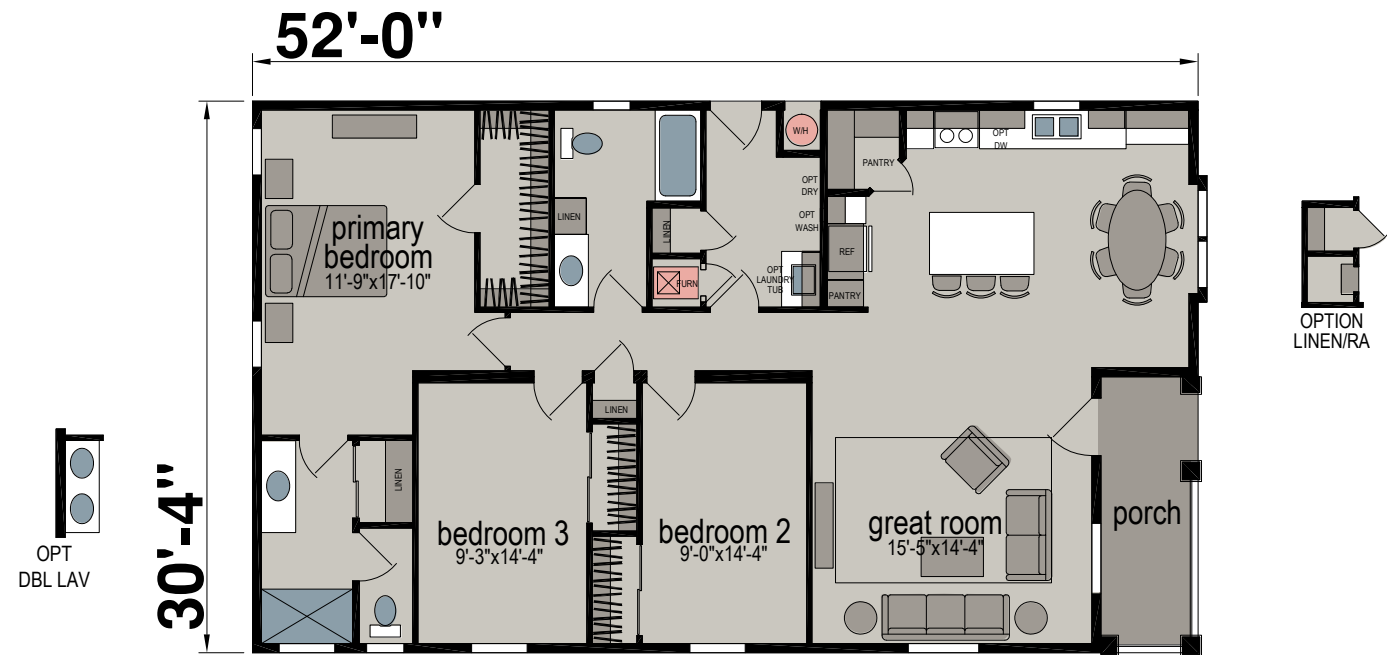
M500C

Four Bed | Two Bath | 1,823 Sq. Ft.



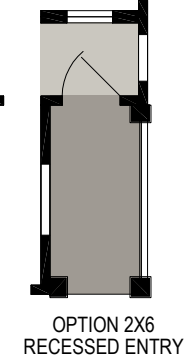
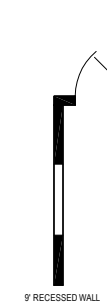
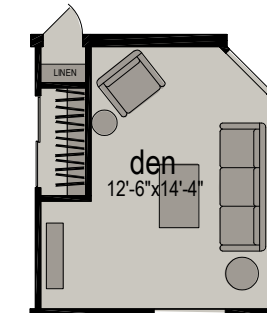
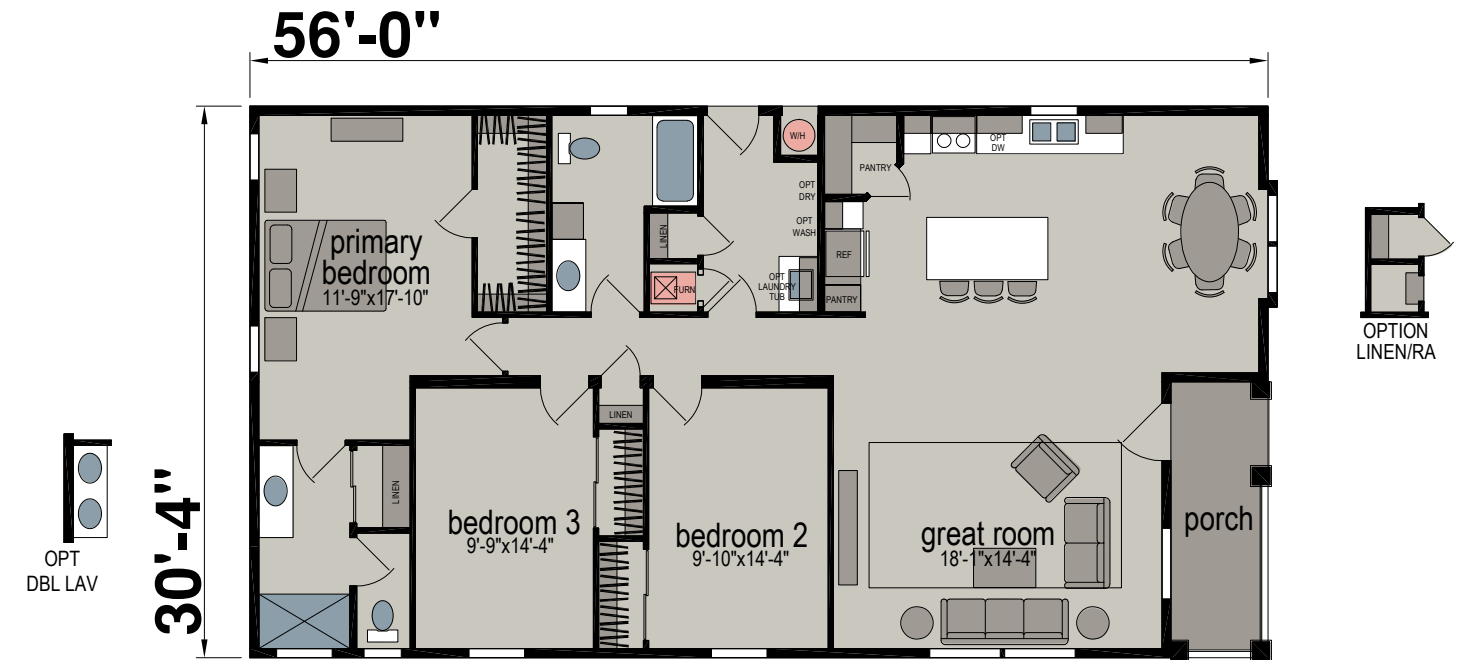
M501A

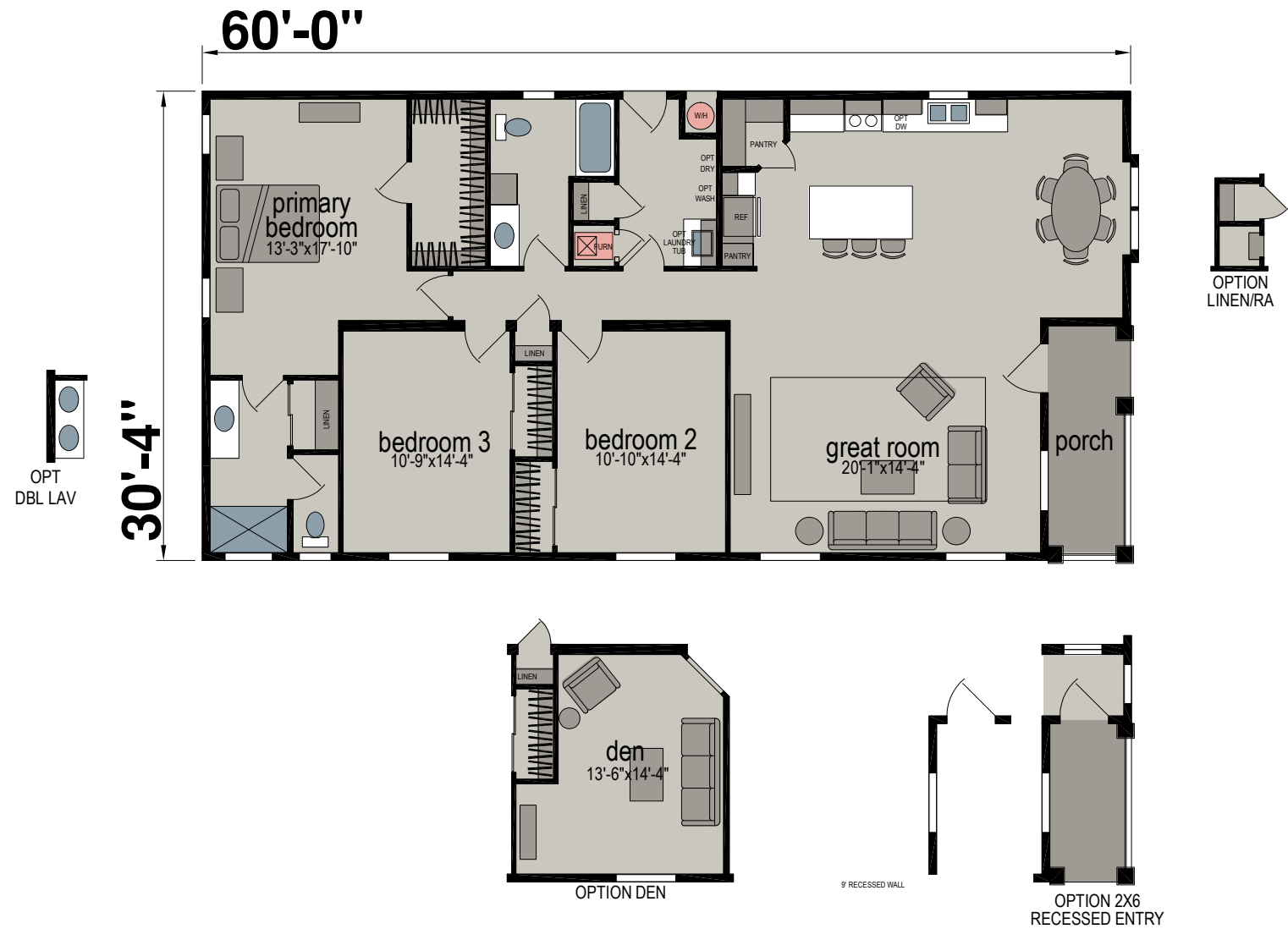
Three Bed | Two Bath | 1,500 Sq. Ft.



M501B

Three Bed | Two Bath | 1,621 Sq. Ft.





Standard Features

Construction

- ENERGY STAR® II
- 8' Sidewalls
- 2x6 Floor Joists
- 2x8 Floor Joists (Single Section)
- 2x6 Exterior Sidewalls
- R-33 Ceiling Insulation
- R-19 Wall Insulation
- R-22 Floor Insulation
- 20lb Roof Load
- 3:12 Roof Pitch (Per Plan)
- Tongue & Groove OSB Floor Decking
- Dual-Glazed Vinyl Framed Low-E Windows
- Steel Outriggers on Exterior Walls
- PEX Water Lines
- Shutoff Valves at all Sinks & Toilets
- WUI Compliant Roof Vents

Exterior

- Vertical Cement Fiber Siding
- Class "A" Architectural Roof Shingles
- Upgrade Exterior
- Exterior Light at Front & Rear Doors
- 36" Craftsman Front Door with Deadbolt
- 32" Cottage Rear Door with Deadbolt
- 12" Front Overhang
- 12" Rear Overhang
- 6" Side Eaves (Per Plan)
- Semi-Gloss Exterior Paint

Interior

- 8' Flat Ceiling
- ½" Drywall Throughout
- Sculptured Floor Molding & Door Casing
- Hand-Finished Knock-Down Wall Texture
- Low Sheen Interior Paint
- 3-Panel Bypass Closet Doors (Per Plan)
- 3-Panel Interior Doors with 3-Mortised Nickel Hinges

- Lever Door Handles with Satin Nickel Finish
- Shaw® Stain Safety Treated Carpet
- 3/8" Rebond Capet Pad
- Vinyl Flooring in Kitchen, Dining Room, Baths & Utility (Per Plan)
- 2" Faux Wood Blinds with Faux Wood Valance
- Double Wood Shelf & Pole in Primary Bedroom Wardrobe
- Single Wood Shelf & Pole in Guest Bedroom Wardrobe
- Wood Shelving in Hall Closet & Linen Closets
- Wood Shelf & Pole Above Washer/Dryer Area
- Cased Windows

Electrical, Heating & Pumbing

- 100 Amp Exterior Electrical Panel Box
- GFI Protected Outlets in Kitchen & Baths
- 4" LED Can Lights Throughout
- Ceiling Fan Prep in Living Room & Bedrooms
- Exterior GFI Protected Outlet
- USB Receptacle in Kitchen Area
- Smoke Detectors with Battery Back-Up
- Switch Wall Outlet in Living Room & Bedrooms
- Dining Room Chandelier
- Shutoff Valves Throughout
- Silent Rocker Light Switches
- 3-Way Switch in Hall & Utility Room
- 40-Gallon Gas Water Heater
- Down Flow Gas Furnace
- Manual Thermostat
- Plumbing for Washer
- Preparation for Gas Dryer
- Recessed Dryer Vent Box

Kitchen

- Hardwood Shaker Style Cabinets
- 42" Tall Overhead Cabinets
- Crown Molding on all Overhead Cabinets
- 3/4" Adjustable Base & Overhead Shelves

- Large Gourmet Kitchen Island (Per Plan)
- Full Extension Ball Bearing Drawer Guides
- Whirlpool® Brand Name Stainless Steel Appliances
- 18.1 Cu.Ft. Frost-Free Refrigerator
- 30" Deluxe Gas Range with Electronic Ignition, Window, Clock & Timer
- Microwave Rangehood
- Dining Room Chandelier
- Deep Single Cell Stainless Steel Sink
- High Arch Single-Lever Faucet with Pull-Out Sprayer
- Bank of Drawers
- Laminate Countertop
- Laminate Square Edge
- Full Height Tile Design Backsplash

Bath

- 60" Fiberglass Shower with Single-Lever Diverter in Primary Bath
- 60" One-Piece Fiberglass Tub/Shower
- Clear Shower Door in Primary Bath
- Porcelain Sink with Overflow & Pop-Up Drain
- Single-Lever Tub/Shower Diverter
- Dual Control Faucets
- Elongated Water-Saver Commode
- Vanity Light Fixture
- Vanity Mirror
- Ceiling Exhaust Fan
- 36" High Countertop
- Laminate Countertop
- Laminate Square Edge
- 4" Laminate Backsplash
- Full Extension Ball Bearing Drawer Guides
- Linen Closet in Primary Bath
- Drawer Bank in Primary Bath
- Beveled Medicine Cabinet in Primary Bath
- Ventilation Windows
- Towel Bar & Tissue Holder
- Privacy Lock

SKYLINE®



Contact Us Today!

Member:



499 W Esplanade Ave | San Jacinto, CA 92583 | (951) 654-9321