

ATHENS PARK SERIES

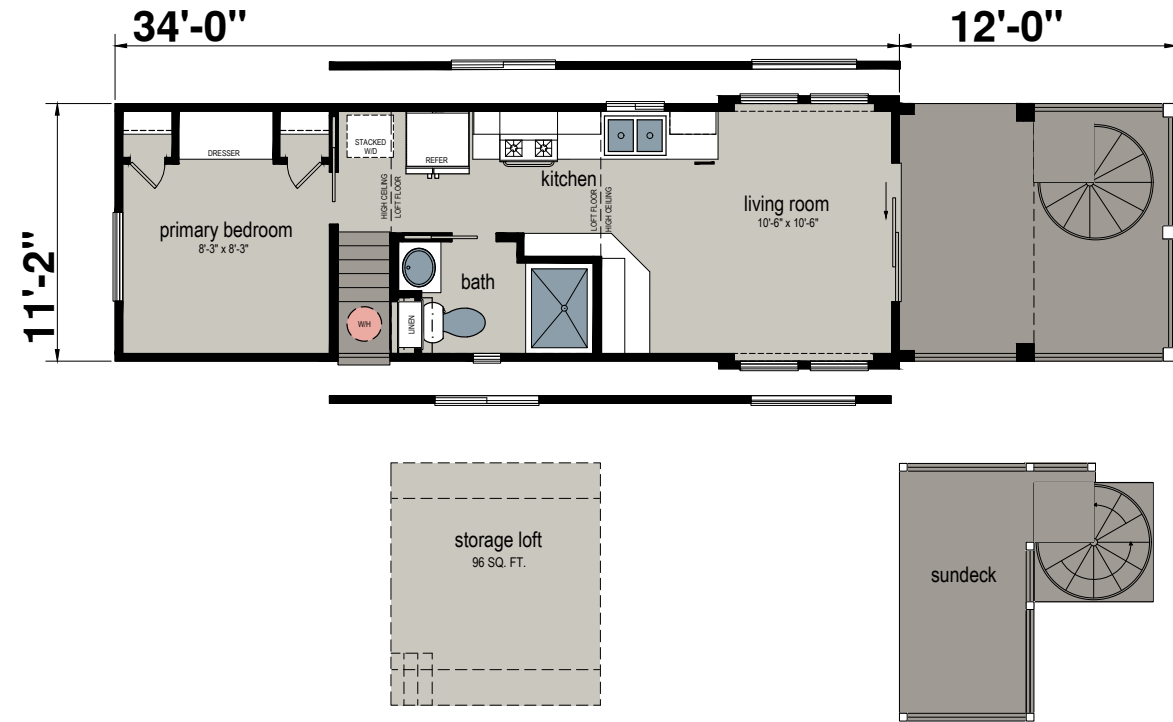
Park Models and Cabins



Silvercrest™

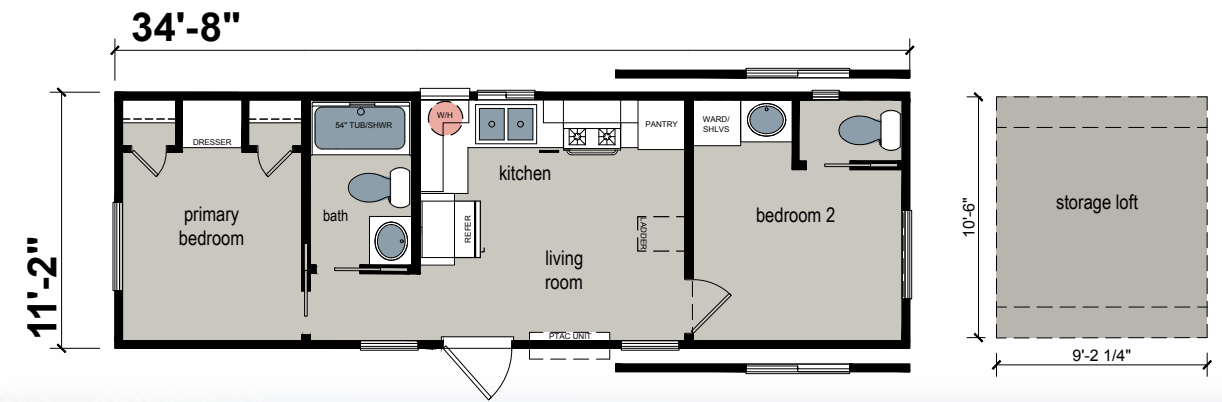
ATH-15L

One Bed | One Bath | 399 sq. FT.



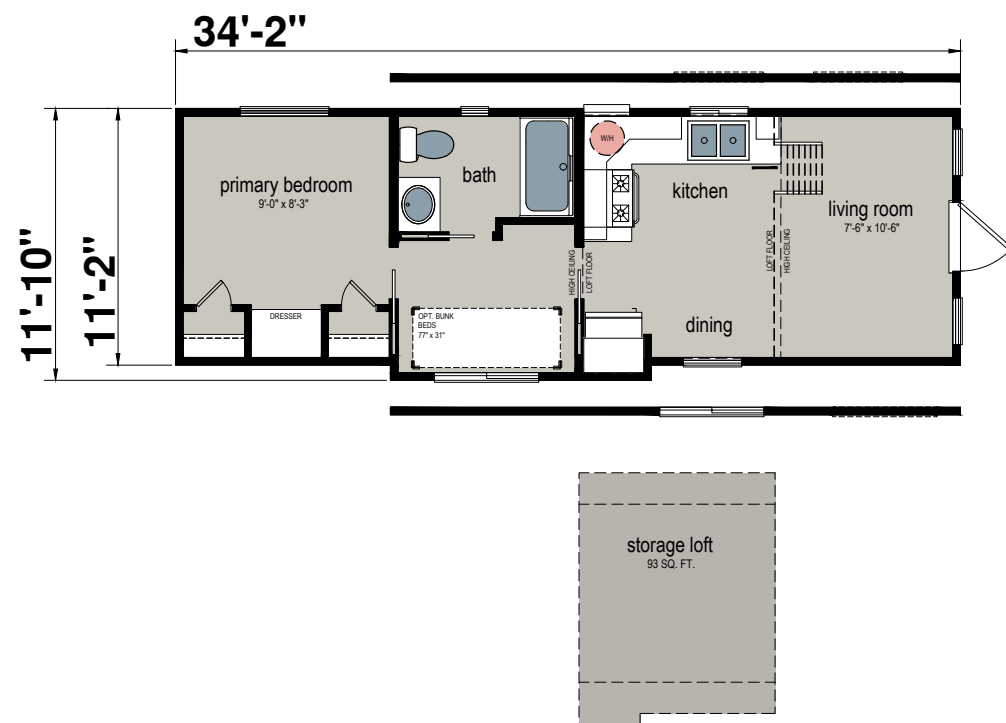
ATH-23L

Two Bed | One Bath | 399 sq. FT.



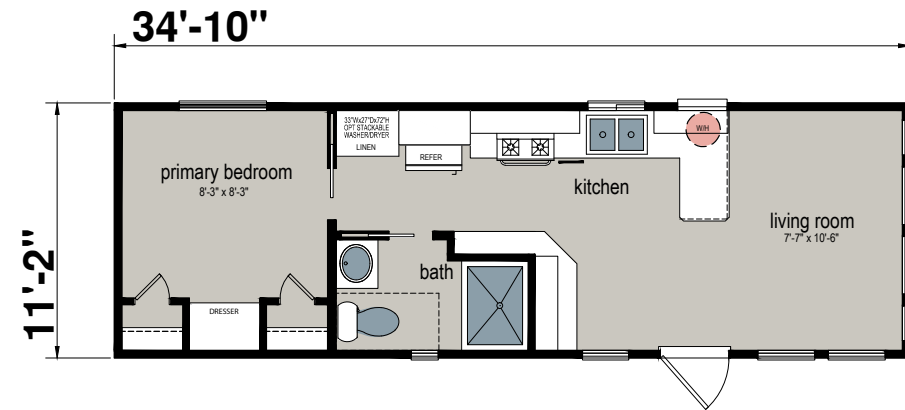
ATH-10L

One Bed | Two Bath | 397 sq. FT.



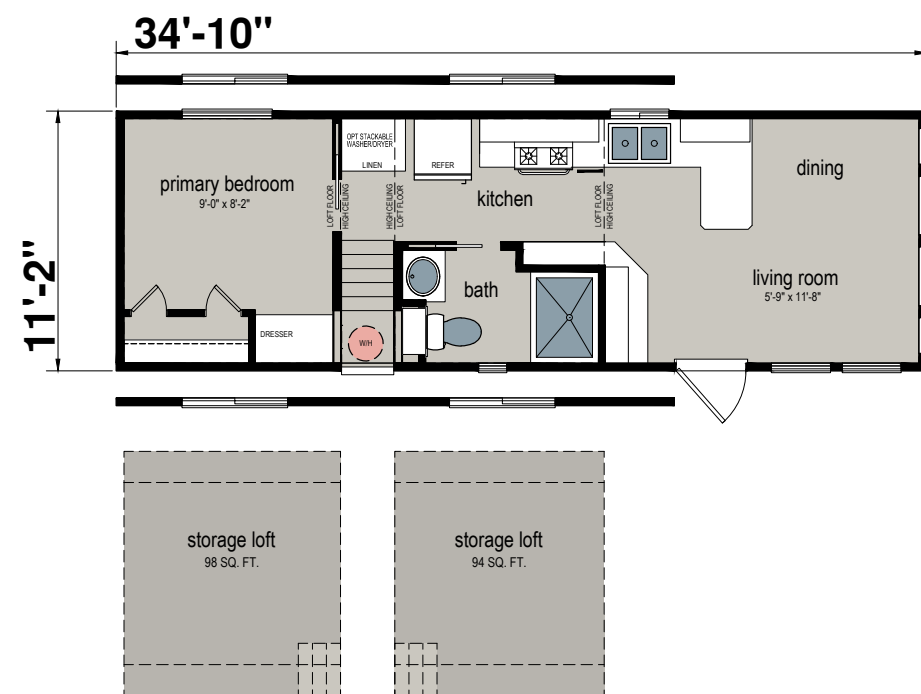
ATH-05

One Bed | One Bath | 397 sq. ft.



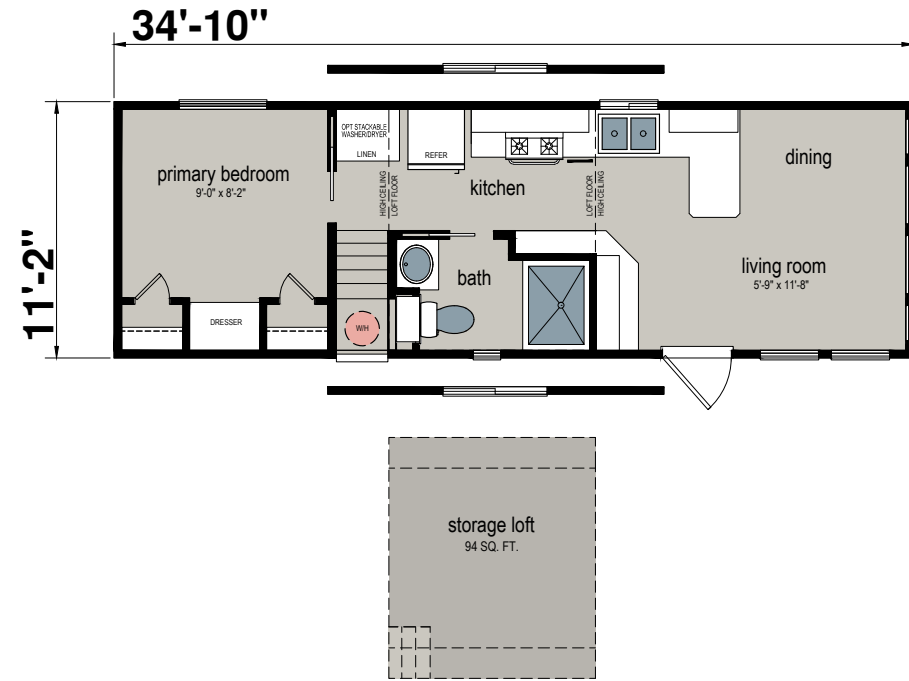
ATH-06DL

One Bed | One Bath | 397 sq. ft.



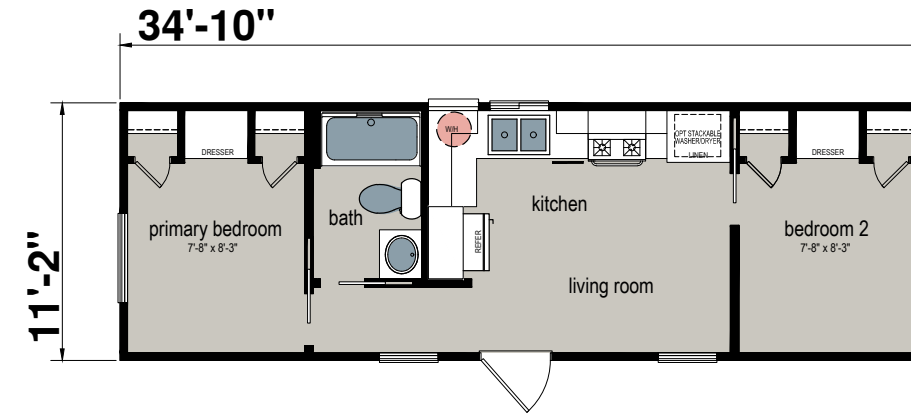
ATH-06SL

One Bed | One Bath | 397 sq. FT.



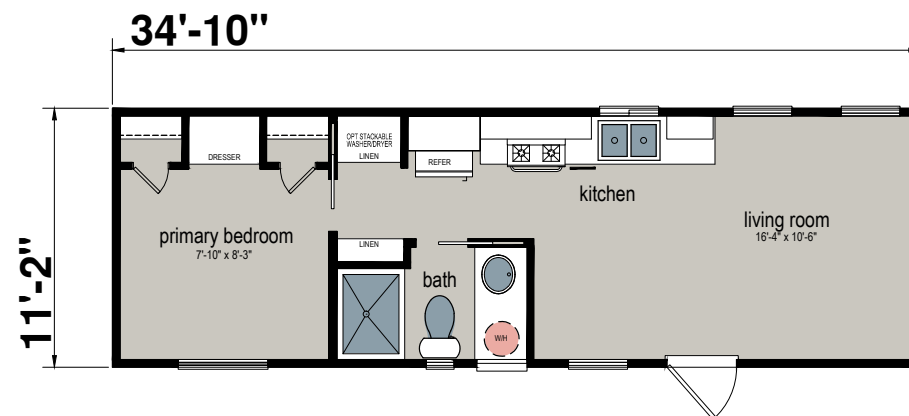
ATH-07

Two Bed | One Bath | 397 sq. FT.



ATH-09

One Bed | One Bath | 397 sq. FT.



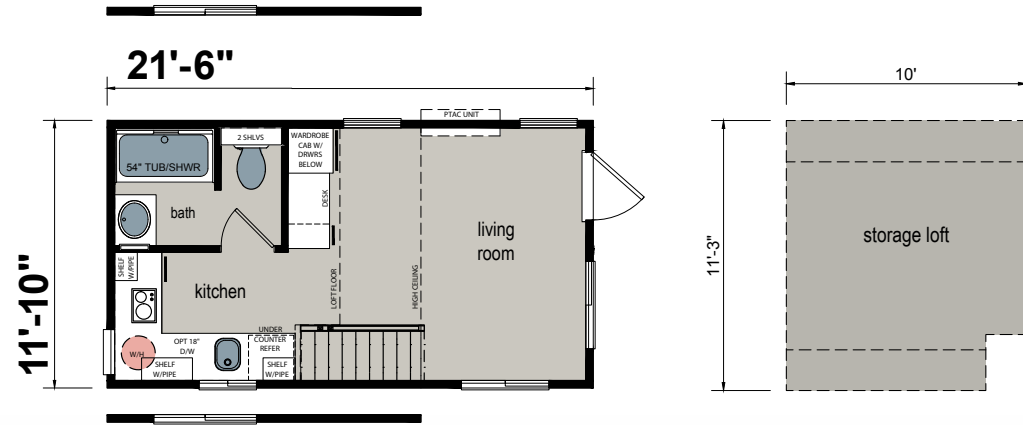
ATH-21L

Two Bed | One Bath | 398 sq. FT.



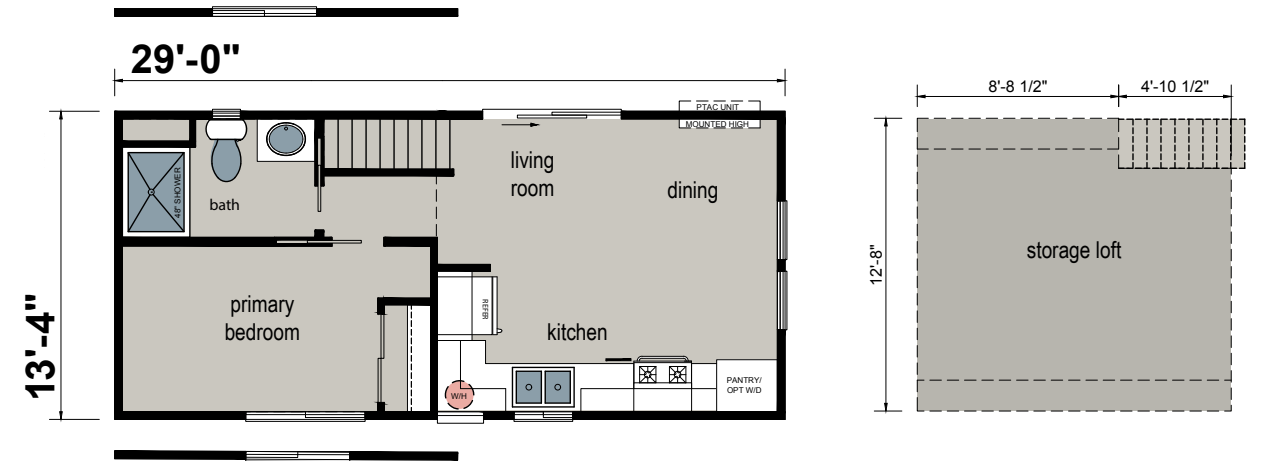
ATH-19L

One Bed | One Bath | 260 sq. FT.



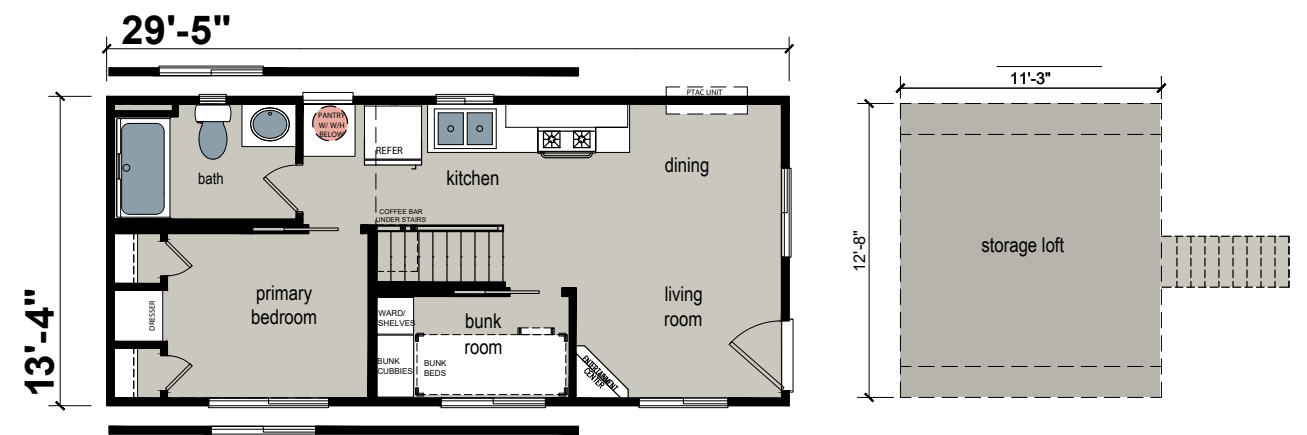
ATH-22L

One Bed | One Bath | 394 sq. FT.



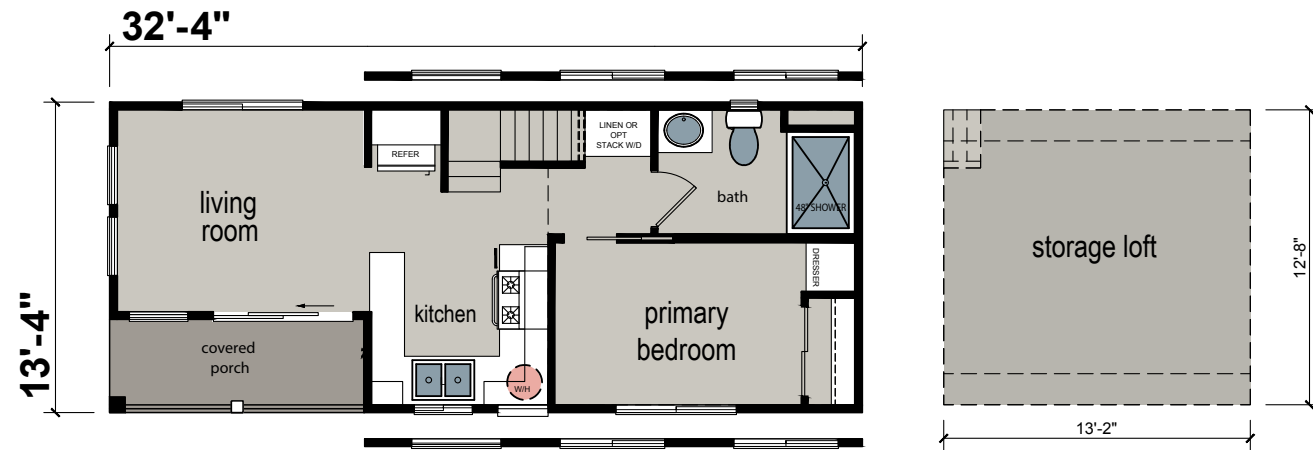
ATH-20L

Two Bed | One Bath | 399 sq. FT.



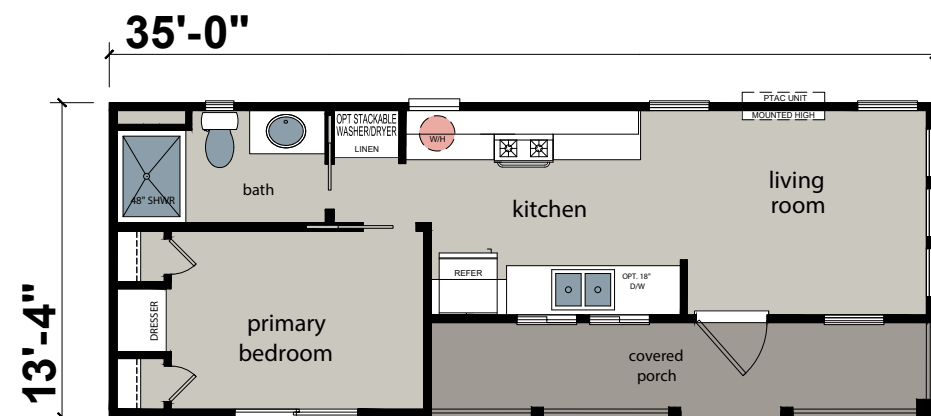
ATH-13L

One Bed | One Bath | 397 sq. FT.



ATH-16

One Bed | One Bath | 389 sq. FT.



Standard Features

Construction

- 30 lb. Roof Load
- R-11 Floor Insulation
- R-13 Wall Insulation
- R-22 Ceiling Insulation
- 2x6 Transverse Floor Joists - 16" O.C.
- 2x4 Exterior Wall Studding - 16" O.C.
- White Vinyl-Framed Dual-Glazed Windows with Low-E Glazing
- White Sliding Glass Door at Entry or Outswing Door (Per Plan)
- Type X Drywall Ceilings
- ½" Drywall on All Interior Walls
- 5/8" OSB Floor Decking
- 108" Sidewall Height (Per Plan)
- 7/16" Roof Sheathing
- 50 Amp Electrical Service

Exterior

- Semi-Gloss Exterior Paint with Three Color Design Featuring High-Quality PPG® Paint
- Class A Fire Rated Shingles with Manufacturer's 30-Year Limited Warranty
- High Wind Nailing Pattern on All Shingles (6 Nails Per Shingle vs. 4 Staples from Other Manufacturers)
- 16" Front End Wall Overhang - Most Models
- 4" Sidewall Eaves (Per Plan)
- 32" Rear Door Outswing (Per Plan)
- Fiber Cement Siding- Vertical Panel
- 8" Hardboard Fascia & 4" Hardboard Corner & Window Trim

Interior

- 9' Flat Ceilings
- ½" Drywall on Walls
- Hand-Finished Orange Peel Textured Finish on Walls & Ceilings
- PPG® Interior Paint - White Walls Standard
- Flat-Panel Passage & Wardrobe Doors Throughout
- White Interior Window Casing & Floor Molding
- 2 ½" Floor Moldings Throughout
- (3) Mortised Hinges on Passage Doors
- Tulip-Style Passage Door Locksets - Satin Nickel Finish
- 2" Faux Wood Blinds Throughout (Except Baths & Utility Room)
- Hardwood Cabinets Throughout with Shaker Cabinet Doors
- Hidden Hinges on Cabinet Doors
- Side-Mounted Metal Drawer Guides
- Rocker-Style Light Switches with Matching Style Wall Outlets
- All Copper Wiring Throughout
- PTAC Heat/AC Unit

Floor Coverings

- Heavy-Duty Vinyl Plank Flooring at Kitchen, Bath, Bedroom or Living Area
- Level 1 Carpeting on Stairs & Loft
- 3/8" Rebond Carpet Pad in Carpeted Areas

Kitchen

- Whirlpool® Kitchen Appliances – Stainless Steel Finish
 - 30" Gas Freestanding Range (Most Plans)
 - 18 Cubic Foot Double-Door Refrigerator (Most Plans)
 - Over-the-Range Microwave Hood
- Single-Lever Kitchen Faucet
- Adjustable Shelves in Overhead Cabinets with White Lined Finished Cabinet Interiors
- Stainless Steel Self-Rimming Ledge Style Sink
- Corian® Countertops with 4" Backsplash

Bathroom(s)

- One-Piece Fiberglass Tub/Shower Combination - or Fiberglass Shower
- Corian® Countertops with 4" Backsplash
- China Self-Rimming Sink
- Satin Nickel Lighting Fixtures
- Chrome Towel Bar and Paper Holder
- Elongated Toilets
- Dual Control Faucet
- Single-Lever Tub/Shower Faucet
- Ceiling Vented Exhaust Fan
- Medicine Cabinet with Beveled Mirror (Per Plan)
- Framed Lavy Mirror to Match Cabinets

Utility & Plumbing

- PEX Water Lines
- PVC Drain Lines
- Water Shut-off Valves at All Sinks & Toilets
- 20-Gallon Electric Water Heater
- Hose Bibb

Lighting

- Three-Arm Wall Mounted Light Above Bath Sink
- 4" LED Recessed Can Light in Kitchen, over Kitchen Sink, Bedroom & Hall

Popular Options

- Dramatic Porches with Railings
- 2 Window Bay With Dresser in Bedroom
- Footlocker Drawers Below Bedroom Wardrobe Cabinet
- Propane Furnace
- "Mini Split" Heating & Cooling System
- Laminate Flooring by Mohawk®
- Digital Thermostat
- Front Bay Windows
- Reflective Roof Sheathing
- In-Floor Ducting for Heat/AC

Contact your Silvercrest Park Model Retailer for Additional Popular Options.

Due to continuous product development and improvement, prices, specifications, and materials are subject to change without notice or obligation. Square footage and other dimensions are approximate. Exterior images may be artist renderings and are not intended to be an accurate representation of the home. Renderings, photos and floor plans may be shown with optional features or third-party additions.

Silvercrest[®]///

Corona, CA



silvercrest.com

