

SIERRA

LIMITED SERIES

Park Model Homes



Silvercrest®

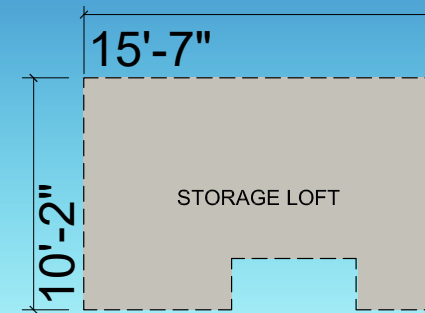
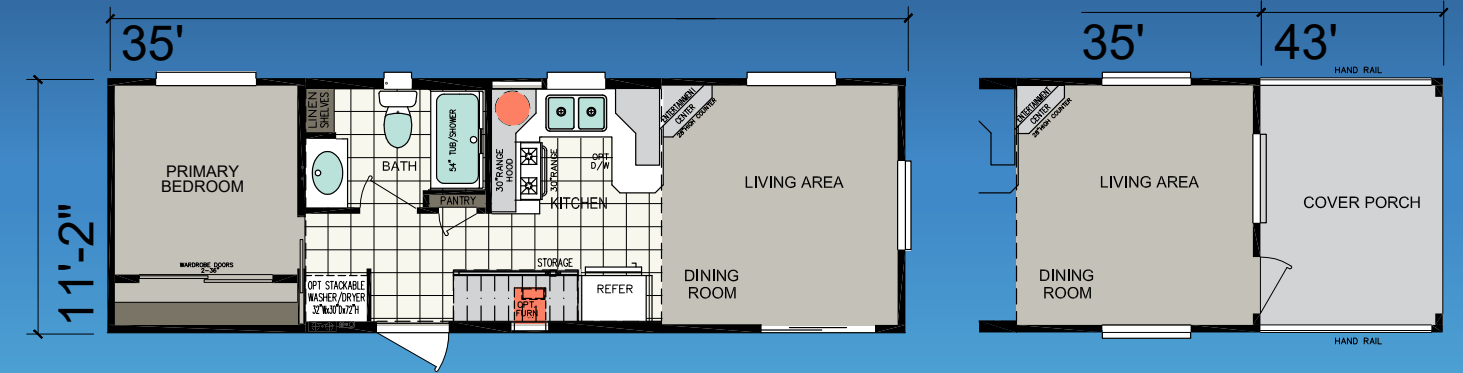
SL-02

One Bed | One Bath | 399 sq. ft.



SL-04

One Bed | One Bath | 399 sq. ft.



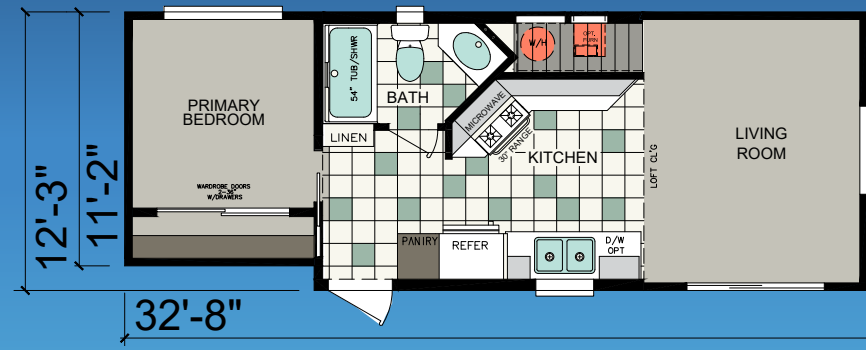
Shown with optional exterior



Shown with optional exterior

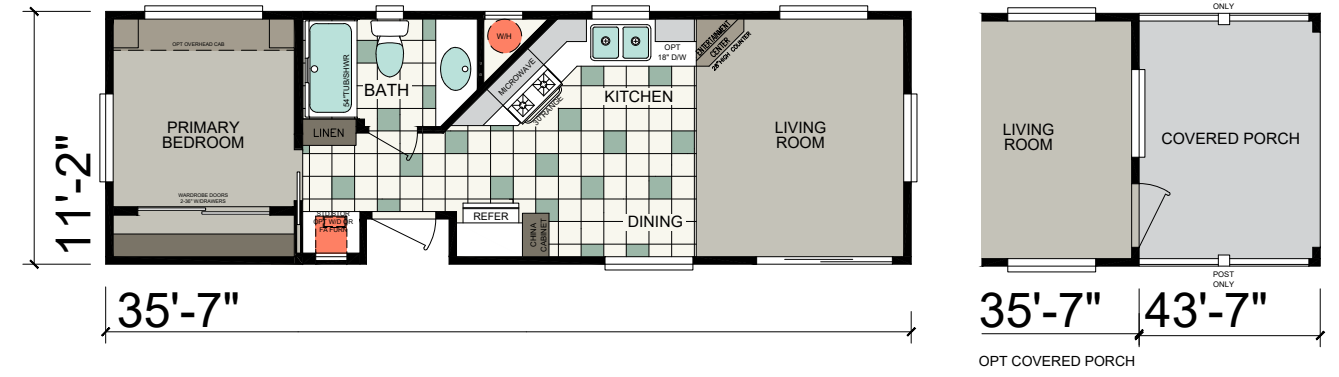
SL-06

One Bed | One Bath | 399 sq. ft.



SL-07

One Bed | One Bath | 399 sq. ft.

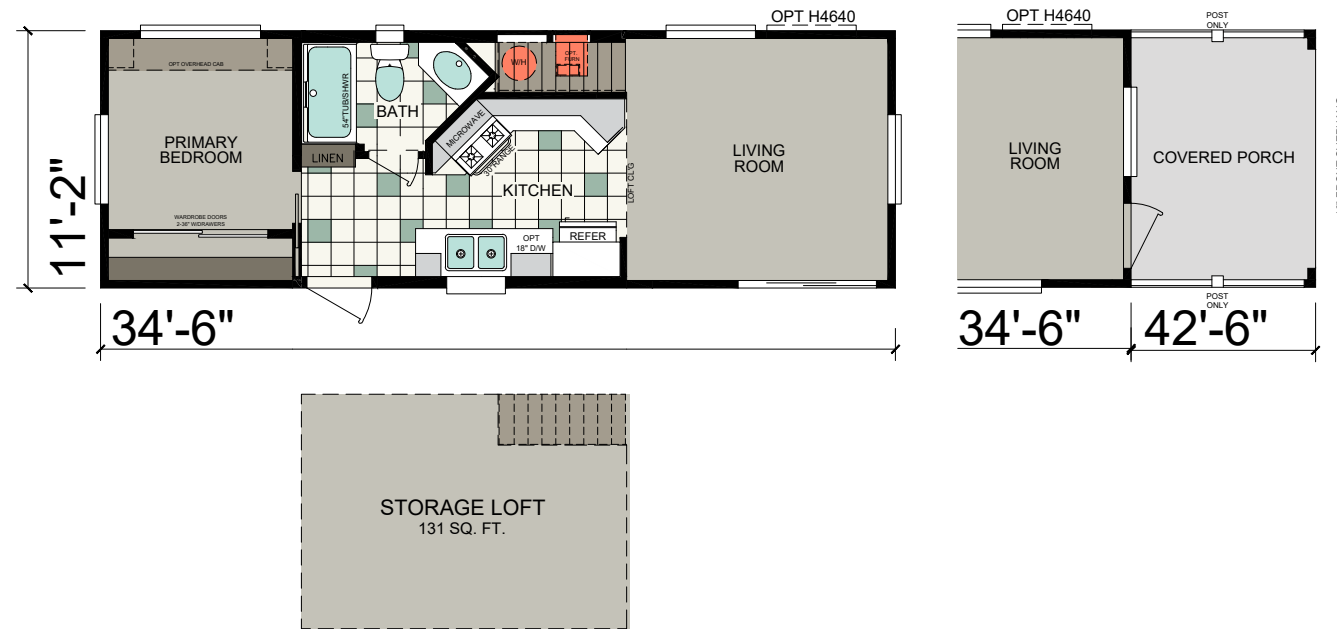


Shown with optional exterior



SL-09

One Bed | One Bath | 399 sq.ft.



Front Bay Window Options

Option 1



Option 2



Option 3



Standard Features

Construction

- 30 lb. Roof Load
- R-11 Floor Insulation
- R-13 Wall Insulation
- R-22 Ceiling Insulation
- 2x6 Transverse Floor Joists – 16" O.C.
- 2x4 Exterior Wall Studding – 16" O.C.
- White Vinyl-Framed Dual-Glazed Windows with Low-E Glazing
- White Metal Sliding Glass Door at Entry
- Type X Drywall Ceilings
- ½" Drywall on All Interior Walls
- 5/8" OSB Floor Decking
- 90" Sidewall Height – Per Plan
- 7/16" Roof Sheathing
- 50 Amp Electrical Service

Exterior

- Semi-Gloss Exterior Paint with Three Color Design Featuring High-Quality PPG® Paint
- Class A Fire Rated Shingles with Manufacturers 30-Year Limited Warranty
- High Wind Nailing Pattern on All Shingles (6 Nails Per Shingle vs. 4 Staples from Other Manufacturers)
- 16" Front End Wall Overhang – Most Models
- 4" Sidewall Eaves (Per Plan)
- 32" Rear Door Outswing
- Fiber Cement Siding
- 8" Hardboard Fascia & 4" Hardboard Corner & Window Trim

Interior

- Vaulted Interior Ceilings
- ½" Drywall on Walls
- Hand-Finished Orange Peel Textured Finish on Walls and Ceilings
- PPG® Interior Paint – White Walls Standard
- Flat-Panel Passage and Wardrobe Doors Throughout
- Dramatic Sculptured Passage Door Casings
- 2 ½" Floor Moldings Throughout
- (3) Mortised Hinges on Passage Doors
- Tulip-Style Passage Door Locksets – Satin Nickel Finish
- 2" Faux Wood Blinds Throughout (Except Baths, Utility Room)
- Shaker Cabinet Doors and Hardwood Cabinets Throughout
- Hidden Hinges on Cabinet Doors
- Side-Mounted Metal Drawer Guides
- Rocker-Style Light Switches with Matching Style Wall Outlets
- All Copper Wiring Throughout
- Metal Floor Ducting (Furnace/AC Optional)
- Foot Locker Cabinet Below Primary Bedroom Wardrobe

Floor Coverings

- Carpet in Living Areas, Loft and Stairs
- 3/8" Rebond Carpet Pad
- Vinyl Plank Flooring in Kitchen, Baths, Utility, and Hall Areas (Per Plan)

Kitchen

- Whirlpool® Kitchen Appliances – Stainless Steel
- 30" Gas Freestanding Range
- 18 Cubic Foot Refrigerator with Top Freezer and Optional Icemaker Kit
- Over the Range Microwave
- ½ HP Garbage Disposal
- Single-Lever Faucet
- Adjustable Shelves in Overhead Cabinets with White Lined Finished Cabinet Interiors
- Deep Stainless Steel Sink
- Corian® Countertops with 4" Corian® Backsplash

Bathroom(s)

- One-Piece Fiberglass Tub/Shower Combination
- Corian® Countertops with 4" Corian® Backsplash
- China Self-Rimming Sink
- Satin Nickel Lighting Fixtures
- Chrome Towel Bar and Paper Holder
- Elongated Toilet
- Dual Control Faucet
- Single-Lever Tub/Shower Faucet
- Ceiling Vented Exhaust Fan
- Medicine Cabinet with Beveled Mirror (Per Plan)
- Framed Mirror

Utility & Plumbing

- 'PEX' Water Lines
- PVC Drain Lines
- Water Shut-off Valves at All Sinks and Toilets
- 20-Gallon Electric Water Heater
- Hose Bibb

Lighting

- Three-Arm Wall Mounted Light Above Bath Sink
- 4" LED Recessed Can Light in Kitchen, Over Kitchen Sink, Hallway, Bedroom

Popular Options

- Dramatic Porches with Railings
- Propane Furnace
- "Mini Split" Heating & Cooling System
- Laminate Flooring by Mohawk®
- Digital Thermostat
- Front Bay Windows
- Reflective Roof Sheathing
- PTAC Heat/AC Unit

Contact your Silvercrest Park Model Retailer for Additional Popular Options.

Due to continuous product development and improvement, prices, specifications, and materials are subject to change without notice or obligation. Square footage and other dimensions are approximate. Exterior images may be artist renderings and are not intended to be an accurate representation of the home. Renderings, photos and floor plans may be shown with optional features or third-party additions.

Silvercrest[®]///

Corona, CA



silvercrest.com

